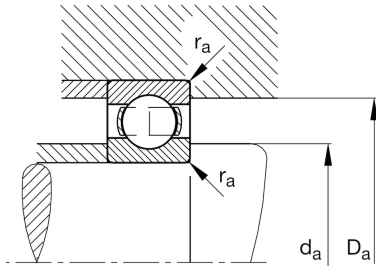
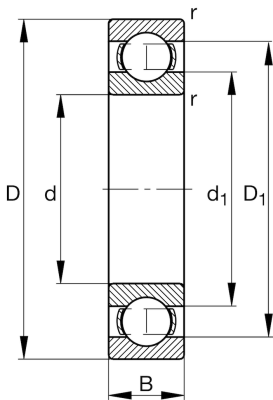


**FAG****61917**

Deep groove ball bearing

Schaeffler ID:
0190027770000Deep groove ball bearing 619, single row,
steel sheet metal cage

Technical information

**Main Dimensions & Performance Data**

d	3,346 in	Bore diameter
D	4,724 in	Outside diameter
B	0,709 in	Width
C_r	7.643,885 lbf	Basic dynamic load rating, radial
C_{0r}	7.081,835 lbf	Basic static load rating, radial
C_{ur}	379,946 lbf	Fatigue load limit, radial
n_G	7.700 1/min	Limiting speed
n_{gr}	5.400 1/min	Reference speed
	1,228 lbs	{Weight}

Mounting dimensions

$d_{a \min}$	3,583 in	Minimum diameter shaft shoulder
$D_{a \max}$	4,488 in	Maximum diameter of housing shoulder
$r_{a \max}$	0,039 in	Maximum fillet radius

Dimensions

r_{\min}	0,043 in	Minimum chamfer dimension
D_1	4,331 in	Shoulder diameter outer ring
d_1	3,824 in	Shoulder diameter inner ring

Temperature range

T_{\min}	-22 °F	Operating temperature min.
T_{\max}	302 °F	Operating temperature max.

Calculation factors

f_0	16,6	Calculation factor
-------	------	--------------------