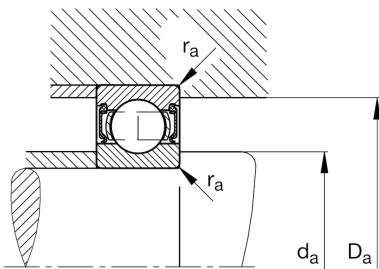
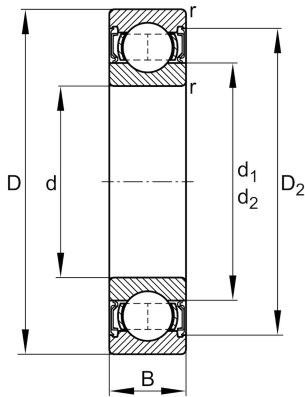


**FAG****6002-2RSR-L038-C3**

Deep groove ball bearing

Schaeffler ID:  
0389136070030Deep groove ball bearing 60...-2RSR,  
single row, seals, steel sheet metal cage

## Technical information

**Main Dimensions & Performance Data**

d	0,591 in	Bore diameter
D	1,26 in	Outside diameter
B	0,354 in	Width
$C_r$	1.326,439 lbf	Basic dynamic load rating, radial
$C_{0r}$	640,737 lbf	Basic static load rating, radial
$C_{ur}$	33,498 lbf	Fatigue load limit, radial
$n_G$	13.100 1/min	Limiting speed
	1,048 oz	Weight

**Mounting dimensions**

$d_{a \min}$	0,669 in	Minimum diameter shaft shoulder
$D_{a \max}$	1,181 in	Maximum diameter of housing shoulder
$r_{a \max}$	0,012 in	Maximum fillet radius

**Dimensions**

$r_{\min}$	0,012 in	Minimum chamfer dimension
$D_2$	1,116 in	Caliber diameter outer ring
$d_1$	0,805 in	Shoulder diameter inner ring

**Temperature range**

$T_{\min}$	-4 °F	Operating temperature min.
$T_{\max}$	212 °F	Operating temperature max.

**Calculation factors**

$f_0$	14	Calculation factor
-------	----	--------------------