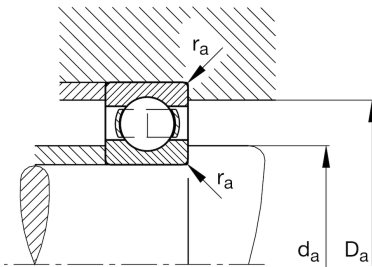
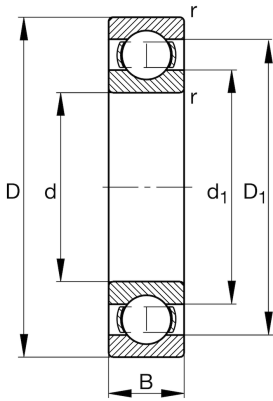
**FAG****6013-M**

Deep groove ball bearing

Schaeffler ID:
0190935940000Deep groove ball bearing 60..-M, single
row, solid brass cage

Technical information

**Main Dimensions & Performance Data**

d	2,559 in	Bore diameter
D	3,937 in	Outside diameter
B	0,709 in	Width
C_r	7.306,655 lbf	Basic dynamic load rating, radial
C_{0r}	5.620,504 lbf	Basic static load rating, radial
C_{ur}	292,266 lbf	Fatigue load limit, radial
n_G	12.400 1/min	Limiting speed
n_{gr}	7.100 1/min	Reference speed
	1,127 lbs	$\{Weight\}$

Mounting dimensions

$d_{a \min}$	2,795 in	Minimum diameter shaft shoulder
$D_{a \max}$	3,701 in	Maximum diameter of housing shoulder
$r_{a \max}$	0,039 in	Maximum fillet radius

Dimensions

r_{\min}	0,043 in	Minimum chamfer dimension
D_1	3,496 in	Shoulder diameter outer ring
d_1	3,001 in	Shoulder diameter inner ring

Temperature range

T_{\min}	-22 °F	Operating temperature min.
T_{\max}	302 °F	Operating temperature max.

Calculation factors

f_0	15,7	Calculation factor
-------	------	--------------------