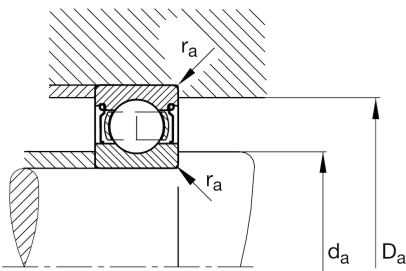
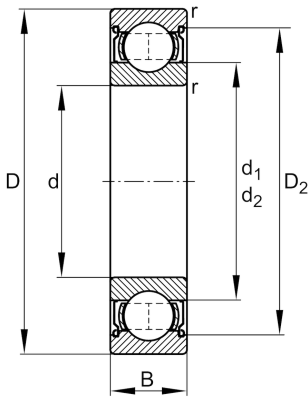


**FAG****6020-2Z-C3**

Deep groove ball bearing

Schaeffler ID:  
0167183720030Deep groove ball bearing 60...-2Z, single  
row, shields, steel sheet metal cage

## Technical information

**Main Dimensions & Performance Data**

d	3,937 in	Bore diameter
D	5,906 in	Outside diameter
B	0,945 in	Width
$C_r$	14.388,489 lbf	Basic dynamic load rating, radial
$C_{0r}$	12.140,288 lbf	Basic static load rating, radial
$C_{ur}$	685,701 lbf	Fatigue load limit, radial
$n_G$	5.200 1/min	Limiting speed
$n_{gr}$	5.100 1/min	Reference speed
	2,844 lbs	{Weight}

**Mounting dimensions**

$d_{a \min}$	4,213 in	Minimum diameter shaft shoulder
$D_{a \max}$	5,63 in	Maximum diameter of housing shoulder
$r_{a \max}$	0,059 in	Maximum fillet radius

**Dimensions**

$r_{\min}$	0,059 in	Minimum chamfer dimension
$D_2$	5,406 in	Caliber diameter outer ring
$d_1$	4,575 in	Shoulder diameter inner ring

**Temperature range**

$T_{\min}$	-4 °F	Operating temperature min.
$T_{\max}$	248 °F	Operating temperature max.

**Calculation factors**

$f_0$	15,8	Calculation factor
-------	------	--------------------