

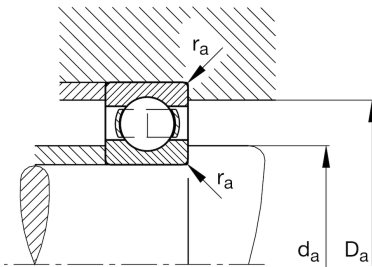
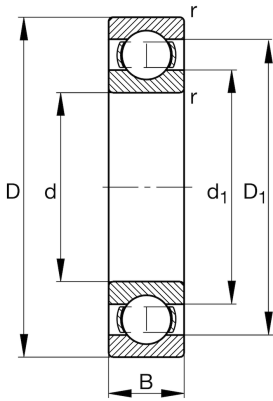
FAG

6044-M-C3

Deep groove ball bearing

Schaeffler ID:
0190956270030Deep groove ball bearing 60...-M, single
row, solid brass cage

Technical information

**Main Dimensions & Performance Data**

d	8,661 in	Bore diameter
D	13,386 in	Outside diameter
B	2,205 in	Width
C_r	55.530,576 lbf	Basic dynamic load rating, radial
C_{0r}	65.197,842 lbf	Basic static load rating, radial
C_{ur}	2.585,432 lbf	Fatigue load limit, radial
n_G	3.300 1/min	Limiting speed
n_{gr}	2.700 1/min	Reference speed
	41,226 lbs	$\{Weight\}$

Mounting dimensions

$d_{a \min}$	9,15 in	Minimum diameter shaft shoulder
$D_{a \max}$	12,898 in	Maximum diameter of housing shoulder
$r_{a \max}$	0,098 in	Maximum fillet radius

Dimensions

r_{\min}	0,118 in	Minimum chamfer dimension
D_1	11,937 in	Shoulder diameter outer ring
d_1	10,156 in	Shoulder diameter inner ring

Temperature range

T_{\min}	-22 °F	Operating temperature min.
T_{\max}	392 °F	Operating temperature max.

Calculation factors

f_0	15,5	Calculation factor
-------	------	--------------------