

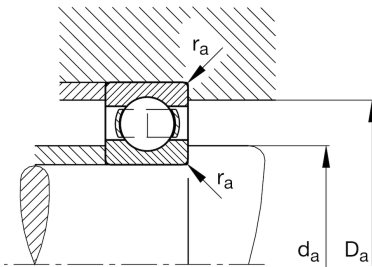
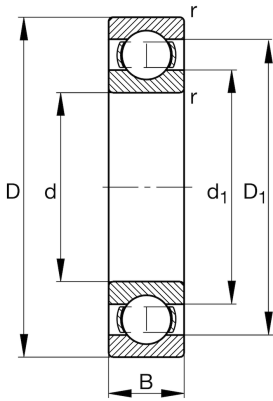
FAG

6076-M-C3

Deep groove ball bearing

Schaeffler ID:
0190960030030Deep groove ball bearing 60...-M, single
row, solid brass cage

Technical information

**Main Dimensions & Performance Data**

d	14,961 in	Bore diameter
D	22,047 in	Outside diameter
B	3,228 in	Width
C_r	102.293,165 lbf	Basic dynamic load rating, radial
C_{0r}	168.615,108 lbf	Basic static load rating, radial
C_{ur}	4.878,597 lbf	Fatigue load limit, radial
n_G	1.910 1/min	Limiting speed
n_{gr}	1.470 1/min	Reference speed
	151,678 lbs	$\{Weight\}$

Mounting dimensions

$d_{a \min}$	15,669 in	Minimum diameter shaft shoulder
$D_{a \max}$	21,339 in	Maximum diameter of housing shoulder
$r_{a \max}$	0,157 in	Maximum fillet radius

Dimensions

r_{\min}	0,197 in	Minimum chamfer dimension
D_1	19,843 in	Shoulder diameter outer ring
d_1	17,266 in	Shoulder diameter inner ring

Temperature range

T_{\min}	-22 °F	Operating temperature min.
T_{\max}	392 °F	Operating temperature max.

Calculation factors

f_0	16,1	Calculation factor
-------	------	--------------------