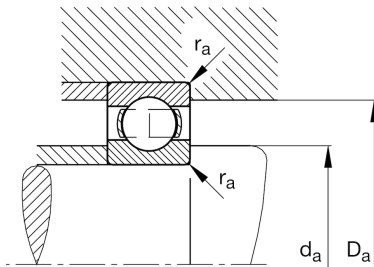
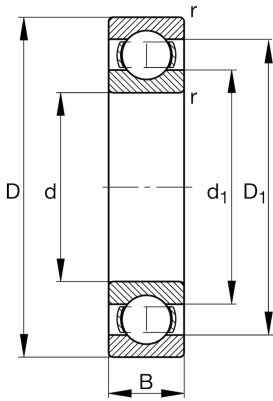
**FAG****618/560-MA**

Deep groove ball bearing

Schaeffler ID:  
0190969760000Deep groove ball bearing 618..-MA, single  
row, solid brass cage

## Technical information

**Main Dimensions & Performance Data**

d	22,047 in	Bore diameter
D	26,772 in	Outside diameter
B	2,205 in	Width
$C_r$	69.694,245 lbf	Basic dynamic load rating, radial
$C_{0r}$	125.899,281 lbf	Basic static load rating, radial
$C_{ur}$	2.967,626 lbf	Fatigue load limit, radial
$n_G$	1.540 1/min	Limiting speed
$n_{gr}$	920 1/min	Reference speed
	76,721 lbs	$\{Weight\}$

**Mounting dimensions**

$d_{a \min}$	22,535 in	Minimum diameter shaft shoulder
$D_{a \max}$	26,283 in	Maximum diameter of housing shoulder
$r_{a \max}$	0,098 in	Maximum fillet radius

**Dimensions**

$r_{\min}$	0,118 in	Minimum chamfer dimension
$D_1$	25,276 in	Shoulder diameter outer ring
$d_1$	23,636 in	Shoulder diameter inner ring

**Temperature range**

$T_{\min}$	-22 °F	Operating temperature min.
$T_{\max}$	392 °F	Operating temperature max.

**Calculation factors**

$f_0$	15,7	Calculation factor
-------	------	--------------------