

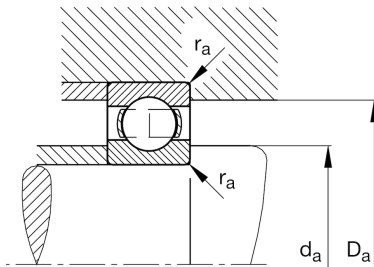
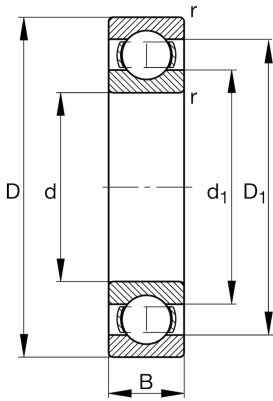
FAG

61844-MA

Deep groove ball bearing

Schaeffler ID:
0389074020000Deep groove ball bearing 618.-MA, single
row, solid brass cage

Technical information

**Main Dimensions & Performance Data**

d	8,661 in	Bore diameter
D	10,63 in	Outside diameter
B	0,945 in	Width
C_r	17.535,971 lbf	Basic dynamic load rating, radial
C_{0r}	21.807,554 lbf	Basic static load rating, radial
C_{ur}	820,594 lbf	Fatigue load limit, radial
n_G	4.150 1/min	Limiting speed
n_{gr}	2.320 1/min	Reference speed
	6,548 lbs	$\{Weight\}$

Mounting dimensions

$d_{a \min}$	8,937 in	Minimum diameter shaft shoulder
$D_{a \max}$	10,354 in	Maximum diameter of housing shoulder
$r_{a \max}$	0,059 in	Maximum fillet radius

Dimensions

r_{\min}	0,059 in	Minimum chamfer dimension
D_1	10,039 in	Shoulder diameter outer ring
d_1	9,285 in	Shoulder diameter inner ring

Temperature range

T_{\min}	-22 °F	Operating temperature min.
T_{\max}	392 °F	Operating temperature max.

Calculation factors

f_0	15,8	Calculation factor
-------	------	--------------------