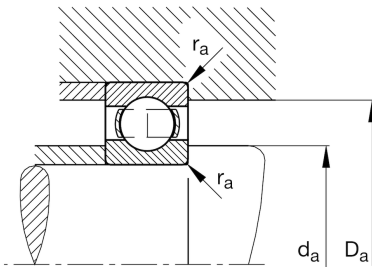
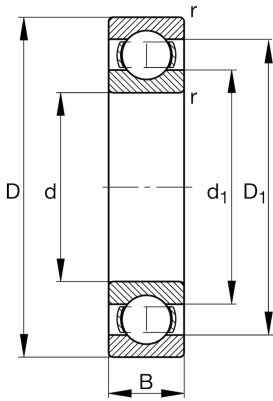
**FAG****61852-M**

Deep groove ball bearing

Schaeffler ID:  
0167191820000Deep groove ball bearing 618..-M, single  
row, solid brass cage

## Technical information

**Main Dimensions & Performance Data**

d	10,236 in	Bore diameter
D	12,598 in	Outside diameter
B	1,102 in	Width
$C_r$	22.931,655 lbf	Basic dynamic load rating, radial
$C_{0r}$	29.676,259 lbf	Basic static load rating, radial
$C_{ur}$	1.045,414 lbf	Fatigue load limit, radial
$n_G$	3.500 1/min	Limiting speed
$n_{gr}$	2.070 1/min	Reference speed
	10,935 lbs	$\{Weight\}$

**Mounting dimensions**

$d_{a \min}$	10,583 in	Minimum diameter shaft shoulder
$D_{a \max}$	12,252 in	Maximum diameter of housing shoulder
$r_{a \max}$	0,079 in	Maximum fillet radius

**Dimensions**

$r_{\min}$	0,079 in	Minimum chamfer dimension
$D_1$	11,843 in	Shoulder diameter outer ring
$d_1$	11,022 in	Shoulder diameter inner ring

**Temperature range**

$T_{\min}$	-22 °F	Operating temperature min.
$T_{\max}$	392 °F	Operating temperature max.

**Calculation factors**

$f_0$	15,8	Calculation factor
-------	------	--------------------