



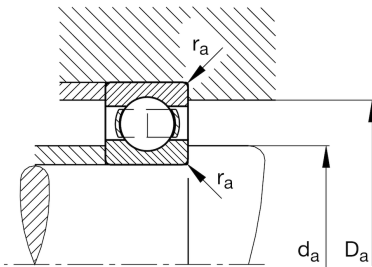
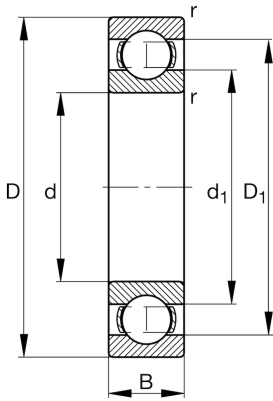
FAG

61896-M-C3

Deep groove ball bearing

Schaeffler ID:
0190983080030Deep groove ball bearing 618.-M, single
row, solid brass cage

Technical information

**Main Dimensions & Performance Data**

| | | |
|----------|-----------------|-----------------------------------|
| d | 18,898 in | Bore diameter |
| D | 23,622 in | Outside diameter |
| B | 2,205 in | Width |
| C_r | 66.321,942 lbf | Basic dynamic load rating, radial |
| C_{0r} | 111.285,971 lbf | Basic static load rating, radial |
| C_{ur} | 2.810,252 lbf | Fatigue load limit, radial |
| n_G | 1.770 1/min | Limiting speed |
| n_{gr} | 1.110 1/min | Reference speed |
| | 85,098 lbs | {Weight} |

Mounting dimensions

| | | |
|--------------|-----------|--------------------------------------|
| $d_{a \min}$ | 19,386 in | Minimum diameter shaft shoulder |
| $D_{a \max}$ | 23,134 in | Maximum diameter of housing shoulder |
| $r_{a \max}$ | 0,098 in | Maximum fillet radius |

Dimensions

| | | |
|------------|-----------|------------------------------|
| r_{\min} | 0,118 in | Minimum chamfer dimension |
| D_1 | 22,081 in | Shoulder diameter outer ring |
| d_1 | 20,484 in | Shoulder diameter inner ring |

Temperature range

| | | |
|------------|--------|----------------------------|
| T_{\min} | -22 °F | Operating temperature min. |
| T_{\max} | 392 °F | Operating temperature max. |

Calculation factors

| | | |
|-------|------|--------------------|
| f_0 | 15,9 | Calculation factor |
|-------|------|--------------------|