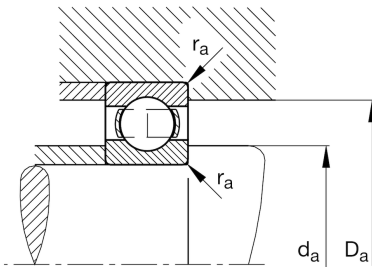
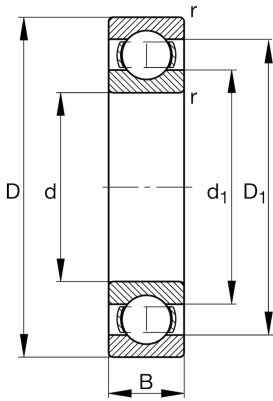
**FAG****619/530-M**

Deep groove ball bearing

Schaeffler ID:  
0190983910000Deep groove ball bearing 619..-M, single  
row, solid brass cage

## Technical information

**Main Dimensions & Performance Data**

d	20,866 in	Bore diameter
D	27,953 in	Outside diameter
B	3,228 in	Width
$C_r$	105.665,468 lbf	Basic dynamic load rating, radial
$C_{0r}$	200.089,928 lbf	Basic static load rating, radial
$C_{ur}$	4.631,295 lbf	Fatigue load limit, radial
$n_G$	1.480 1/min	Limiting speed
$n_{gr}$	1.010 1/min	Reference speed
	198,416 lbs	$\{Weight\}$

**Mounting dimensions**

$d_{a \min}$	21,575 in	Minimum diameter shaft shoulder
$D_{a \max}$	27,244 in	Maximum diameter of housing shoulder
$r_{a \max}$	0,157 in	Maximum fillet radius

**Dimensions**

$r_{\min}$	0,197 in	Minimum chamfer dimension
$D_1$	25,728 in	Shoulder diameter outer ring
$d_1$	23,169 in	Shoulder diameter inner ring

**Temperature range**

$T_{\min}$	-22 °F	Operating temperature min.
$T_{\max}$	392 °F	Operating temperature max.

**Calculation factors**

$f_0$	16,4	Calculation factor
-------	------	--------------------