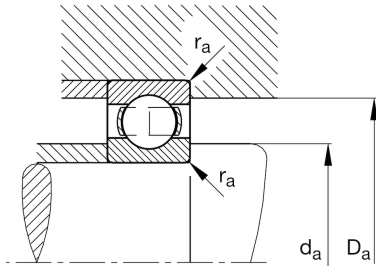
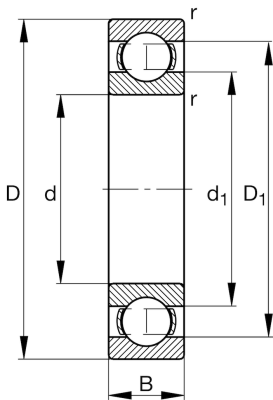


**FAG****6208-C4**

Deep groove ball bearing

Schaeffler ID:
0167203770040Deep groove ball bearing 62, single row,
steel sheet metal cage

Technical information

**Main Dimensions & Performance Data**

d	1,575 in	Bore diameter
D	3,15 in	Outside diameter
B	0,709 in	Width
C_r	6.969,424 lbf	Basic dynamic load rating, radial
C_{0r}	4.001,799 lbf	Basic static load rating, radial
C_{ur}	242,806 lbf	Fatigue load limit, radial
n_G	12.300 1/min	Limiting speed
n_{gr}	9.300 1/min	Reference speed
	12,99 oz	{Weight}

Mounting dimensions

$d_{a \min}$	1,85 in	Minimum diameter shaft shoulder
$D_{a \max}$	2,874 in	Maximum diameter of housing shoulder
$r_{a \max}$	0,039 in	Maximum fillet radius

Dimensions

r_{\min}	0,043 in	Minimum chamfer dimension
D_1	2,661 in	Shoulder diameter outer ring
d_1	2,085 in	Shoulder diameter inner ring

Temperature range

T_{\min}	-22 °F	Operating temperature min.
T_{\max}	248 °F	Operating temperature max.

Calculation factors

f_0	14	Calculation factor
-------	----	--------------------