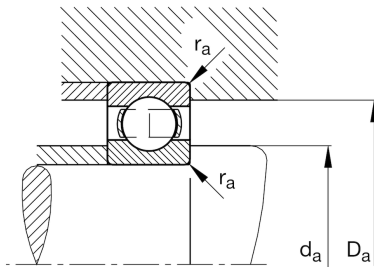
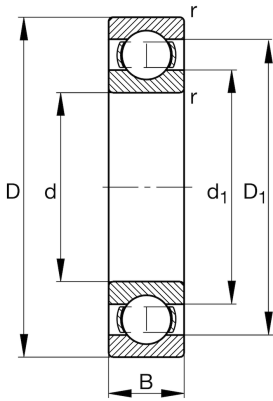
**FAG****6211-M-C3**

Deep groove ball bearing

Schaeffler ID:
0191040810030Deep groove ball bearing 62...-M, single
row, solid brass cage

Technical information

**Main Dimensions & Performance Data**

d	2,165 in	Bore diameter
D	3,937 in	Outside diameter
B	0,827 in	Width
C_r	10.341,727 lbf	Basic dynamic load rating, radial
C_{0r}	6.519,784 lbf	Basic static load rating, radial
C_{ur}	397,932 lbf	Fatigue load limit, radial
n_G	12.300 1/min	Limiting speed
n_{gr}	7.500 1/min	Reference speed
	1,631 lbs	$\{Weight\}$

Mounting dimensions

$d_{a \min}$	2,52 in	Minimum diameter shaft shoulder
$D_{a \max}$	3,583 in	Maximum diameter of housing shoulder
$r_{a \max}$	0,059 in	Maximum fillet radius

Dimensions

r_{\min}	0,059 in	Minimum chamfer dimension
D_1	3,392 in	Shoulder diameter outer ring
d_1	2,714 in	Shoulder diameter inner ring

Temperature range

T_{\min}	-22 °F	Operating temperature min.
T_{\max}	302 °F	Operating temperature max.

Calculation factors

f_0	14,2	Calculation factor
-------	------	--------------------