

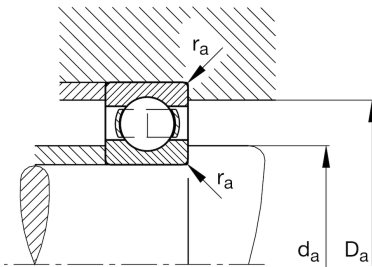
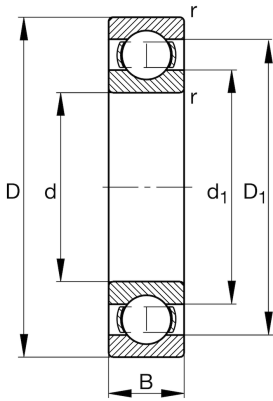
FAG

6212-M-C4

Deep groove ball bearing

Schaeffler ID:
0191043910040Deep groove ball bearing 62...-M, single
row, solid brass cage

Technical information

**Main Dimensions & Performance Data**

d	2,362 in	Bore diameter
D	4,331 in	Outside diameter
B	0,866 in	Width
C_r	12.814,748 lbf	Basic dynamic load rating, radial
C_{0r}	8.205,935 lbf	Basic static load rating, radial
C_{ur}	573,291 lbf	Fatigue load limit, radial
n_G	12.100 1/min	Limiting speed
n_{gr}	6.800 1/min	Reference speed
	2,05 lbs	{Weight}

Mounting dimensions

$d_{a \min}$	2,717 in	Minimum diameter shaft shoulder
$D_{a \max}$	3,976 in	Maximum diameter of housing shoulder
$r_{a \max}$	0,059 in	Maximum fillet radius

Dimensions

r_{\min}	0,059 in	Minimum chamfer dimension
D_1	3,772 in	Shoulder diameter outer ring
d_1	2,982 in	Shoulder diameter inner ring

Temperature range

T_{\min}	-22 °F	Operating temperature min.
T_{\max}	302 °F	Operating temperature max.

Calculation factors

f_0	14,5	Calculation factor
-------	------	--------------------