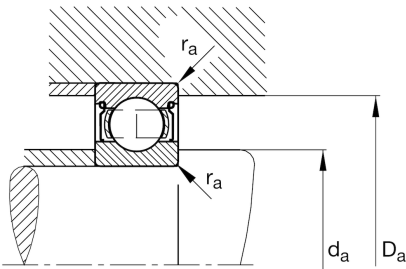
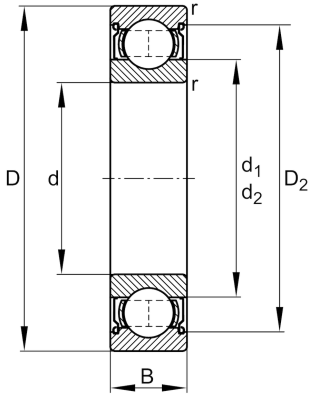


**FAG****6213-Z**

Deep groove ball bearing

Schaeffler ID:
0190028580000Deep groove ball bearing 62...-Z, single
row, shield , steel sheet metal cage

Technical information

**Main Dimensions & Performance Data**

d	2,559 in	Bore diameter
D	4,724 in	Outside diameter
B	0,906 in	Width
C_r	14.163,669 lbf	Basic dynamic load rating, radial
C_{0r}	9.330,036 lbf	Basic static load rating, radial
C_{ur}	640,737 lbf	Fatigue load limit, radial
n_G	8.600 1/min	Limiting speed
n_{gr}	6.300 1/min	Reference speed
	2,116 lbs	Weight

Mounting dimensions

$d_{a \min}$	2,913 in	Minimum diameter shaft shoulder
$D_{a \max}$	4,37 in	Maximum diameter of housing shoulder
$r_{a \max}$	0,059 in	Maximum fillet radius

Dimensions

r_{\min}	0,059 in	Minimum chamfer dimension
D_2	4,187 in	Caliber diameter outer ring
d_1	3,228 in	Shoulder diameter inner ring

Temperature range

T_{\min}	-22 °F	Operating temperature min.
T_{\max}	302 °F	Operating temperature max.

Calculation factors

f_0	14,4	Calculation factor
-------	------	--------------------