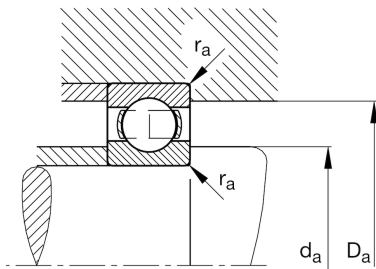
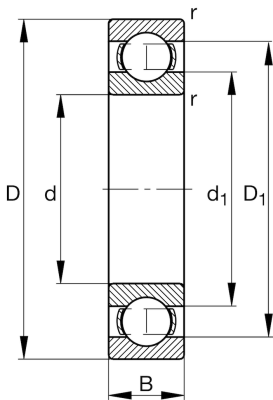


**FAG****6216-C4**

Deep groove ball bearing

Schaeffler ID:  
0167213650040Deep groove ball bearing 62, single row,  
steel sheet metal cage

## Technical information

**Main Dimensions & Performance Data**

d	3,15 in	Bore diameter
D	5,512 in	Outside diameter
B	1,024 in	Width
$C_r$	17.311,151 lbf	Basic dynamic load rating, radial
$C_{0r}$	12.365,108 lbf	Basic static load rating, radial
$C_{ur}$	820,594 lbf	Fatigue load limit, radial
$n_G$	7.300 1/min	Limiting speed
$n_{gr}$	5.500 1/min	Reference speed
	3,157 lbs	Weight

**Mounting dimensions**

$d_{a \min}$	3,583 in	Minimum diameter shaft shoulder
$D_{a \max}$	5,079 in	Maximum diameter of housing shoulder
$r_{a \max}$	0,079 in	Maximum fillet radius

**Dimensions**

$r_{\min}$	0,079 in	Minimum chamfer dimension
$D_1$	4,783 in	Shoulder diameter outer ring
$d_1$	3,891 in	Shoulder diameter inner ring

**Temperature range**

$T_{\min}$	-22 °F	Operating temperature min.
$T_{\max}$	302 °F	Operating temperature max.

**Calculation factors**

$f_0$	15	Calculation factor
-------	----	--------------------