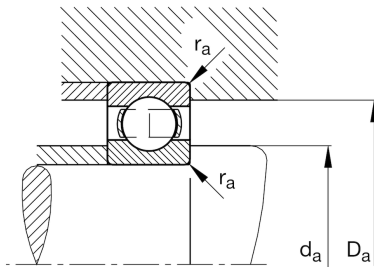
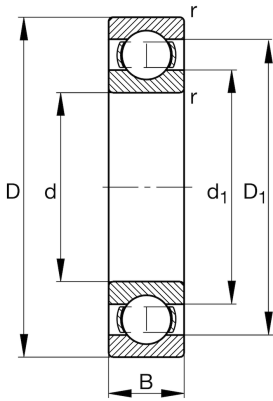


**FAG****6220-J20AA-C3**

Deep groove ball bearing

Schaeffler ID:  
0390140020030Deep groove ball bearing 62...J20AA,  
single row, steel sheet metal cage, ceramic  
coated

## Technical information

**Main Dimensions & Performance Data**

d	3,937 in	Bore diameter
D	7,087 in	Outside diameter
B	1,339 in	Width
$C_r$	29.226,619 lbf	Basic dynamic load rating, radial
$C_{0r}$	20.908,273 lbf	Basic static load rating, radial
$C_{ur}$	1.236,511 lbf	Fatigue load limit, radial
$n_G$	5.000 1/min	Limiting speed
$n_{gr}$	4.800 1/min	Reference speed
	7,006 lbs	$\{Weight\}$

**Mounting dimensions**

$d_{a \min}$	4,409 in	Minimum diameter shaft shoulder
$D_{a \max}$	6,614 in	Maximum diameter of housing shoulder
$r_{a \max}$	0,083 in	Maximum fillet radius

**Dimensions**

$r_{\min}$	0,083 in	Minimum chamfer dimension
$D_1$	6,12 in	Shoulder diameter outer ring
$d_1$	4,924 in	Shoulder diameter inner ring

**Temperature range**

$T_{\min}$	-22 °F	Operating temperature min.
$T_{\max}$	302 °F	Operating temperature max.

**Calculation factors**

$f_0$	14,4	Calculation factor
-------	------	--------------------