



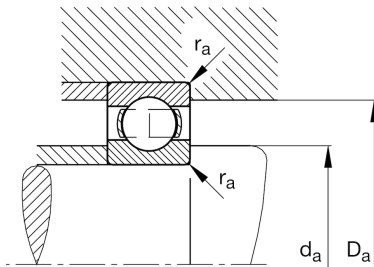
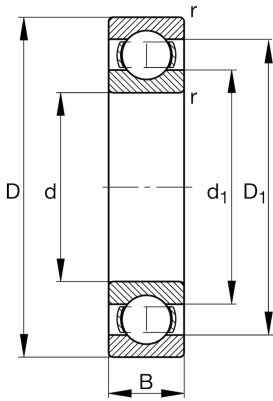
FAG

6226-J20AA-C3

Deep groove ball bearing

Schaeffler ID:
0392410250030Deep groove ball bearing 62...J20AA,
single row, steel sheet metal cage, ceramic
coated

Technical information

**Main Dimensions & Performance Data**

d	5,118 in	Bore diameter
D	9,055 in	Outside diameter
B	1,575 in	Width
C_r	39.793,165 lbf	Basic dynamic load rating, radial
C_{0r}	32.823,741 lbf	Basic static load rating, radial
C_{ur}	1.731,115 lbf	Fatigue load limit, radial
n_G	3.850 1/min	Limiting speed
n_{gr}	3.900 1/min	Reference speed
	13,146 lbs	Weight

Mounting dimensions

$d_{a \min}$	5,669 in	Minimum diameter shaft shoulder
$D_{a \max}$	8,504 in	Maximum diameter of housing shoulder
$r_{a \max}$	0,098 in	Maximum fillet radius

Dimensions

r_{\min}	0,118 in	Minimum chamfer dimension
D_1	7,843 in	Shoulder diameter outer ring
d_1	6,355 in	Shoulder diameter inner ring

Temperature range

T_{\min}	-22 °F	Operating temperature min.
T_{\max}	302 °F	Operating temperature max.

Calculation factors

f_0	14,5	Calculation factor
-------	------	--------------------