



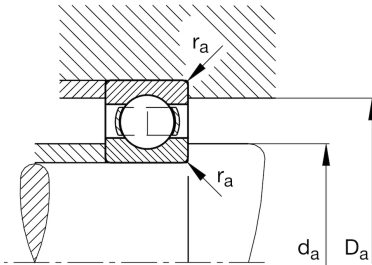
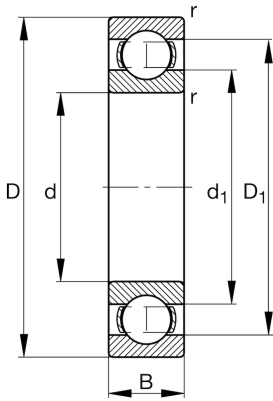
FAG

**6226-M-C4**

Deep groove ball bearing

Schaeffler ID:  
0384052100040Deep groove ball bearing 62...-M, single  
row, solid brass cage

## Technical information

**Main Dimensions & Performance Data**

|          |                |                                   |
|----------|----------------|-----------------------------------|
| d        | 5,118 in       | Bore diameter                     |
| D        | 9,055 in       | Outside diameter                  |
| B        | 1,575 in       | Width                             |
| $C_r$    | 39.793,165 lbf | Basic dynamic load rating, radial |
| $C_{0r}$ | 32.823,741 lbf | Basic static load rating, radial  |
| $C_{ur}$ | 1.731,115 lbf  | Fatigue load limit, radial        |
| $n_G$    | 5.000 1/min    | Limiting speed                    |
| $n_{gr}$ | 3.900 1/min    | Reference speed                   |
|          | 16,094 lbs     | {Weight}                          |

**Mounting dimensions**

|              |          |                                      |
|--------------|----------|--------------------------------------|
| $d_{a \min}$ | 5,669 in | Minimum diameter shaft shoulder      |
| $D_{a \max}$ | 8,504 in | Maximum diameter of housing shoulder |
| $r_{a \max}$ | 0,098 in | Maximum fillet radius                |

**Dimensions**

|            |          |                              |
|------------|----------|------------------------------|
| $r_{\min}$ | 0,118 in | Minimum chamfer dimension    |
| $D_1$      | 7,82 in  | Shoulder diameter outer ring |
| $d_1$      | 6,355 in | Shoulder diameter inner ring |

**Temperature range**

|            |        |                            |
|------------|--------|----------------------------|
| $T_{\min}$ | -22 °F | Operating temperature min. |
| $T_{\max}$ | 302 °F | Operating temperature max. |

**Calculation factors**

|       |      |                    |
|-------|------|--------------------|
| $f_0$ | 14,5 | Calculation factor |
|-------|------|--------------------|