

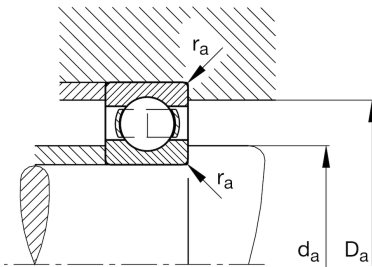
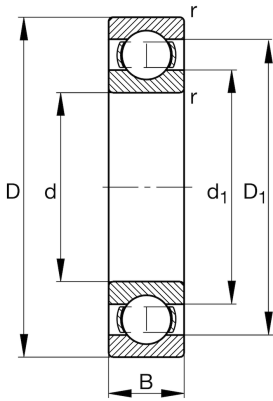
FAG

**6309-M-C3**

Deep groove ball bearing

Schaeffler ID:  
0191096360030Deep groove ball bearing 63.-M, single  
row, solid brass cage

## Technical information

**Main Dimensions & Performance Data**

d	1,772 in	Bore diameter
D	3,937 in	Outside diameter
B	0,984 in	Width
$C_r$	12,589,928 lbf	Basic dynamic load rating, radial
$C_{0r}$	7,081,835 lbf	Basic static load rating, radial
$C_{ur}$	503,597 lbf	Fatigue load limit, radial
$n_G$	12.400 1/min	Limiting speed
$n_{gr}$	8.200 1/min	Reference speed
	2,249 lbs	{Weight}

**Mounting dimensions**

$d_{a \min}$	2,126 in	Minimum diameter shaft shoulder
$D_{a \max}$	3,583 in	Maximum diameter of housing shoulder
$r_{a \max}$	0,059 in	Maximum fillet radius

**Dimensions**

$r_{\min}$	0,059 in	Minimum chamfer dimension
$D_1$	3,28 in	Shoulder diameter outer ring
$d_1$	2,451 in	Shoulder diameter inner ring

**Temperature range**

$T_{\min}$	-22 °F	Operating temperature min.
$T_{\max}$	302 °F	Operating temperature max.

**Calculation factors**

$f_0$	12,9	Calculation factor
-------	------	--------------------