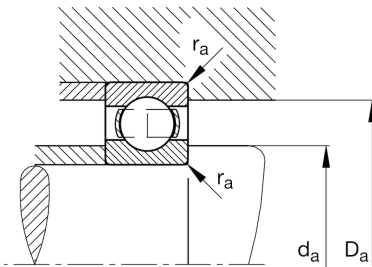
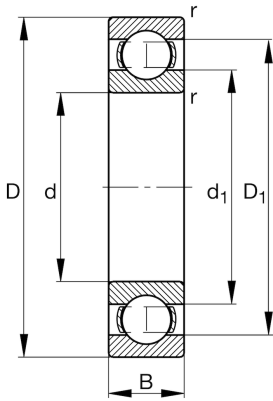
**FAG****6312-M**

Deep groove ball bearing

Schaeffler ID:  
0191104480000Deep groove ball bearing 63.-M, single  
row, solid brass cage

## Technical information

**Main Dimensions & Performance Data**

d	2,362 in	Bore diameter
D	5,118 in	Outside diameter
B	1,22 in	Width
$C_r$	20.008,993 lbf	Basic dynamic load rating, radial
$C_{0r}$	11.690,647 lbf	Basic static load rating, radial
$C_{ur}$	809,353 lbf	Fatigue load limit, radial
$n_G$	10.300 1/min	Limiting speed
$n_{gr}$	6.700 1/min	Reference speed
	4,566 lbs	$\{Weight\}$

**Mounting dimensions**

$d_{a \min}$	2,835 in	Minimum diameter shaft shoulder
$D_{a \max}$	4,646 in	Maximum diameter of housing shoulder
$r_{a \max}$	0,083 in	Maximum fillet radius

**Dimensions**

$r_{\min}$	0,083 in	Minimum chamfer dimension
$D_1$	4,276 in	Shoulder diameter outer ring
$d_1$	3,199 in	Shoulder diameter inner ring

**Temperature range**

$T_{\min}$	-22 °F	Operating temperature min.
$T_{\max}$	302 °F	Operating temperature max.

**Calculation factors**

$f_0$	13,2	Calculation factor
-------	------	--------------------