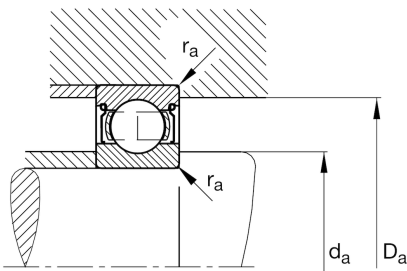
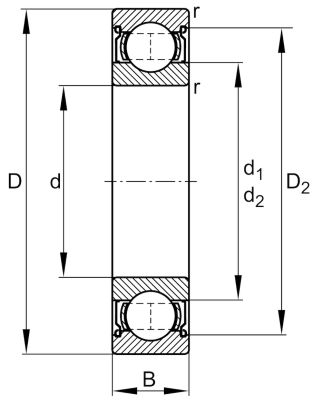


**FAG****6315-Z**

Deep groove ball bearing

Schaeffler ID:
0191111500000Deep groove ball bearing 63...-Z, single
row, shield, steel sheet metal cage

Technical information

**Main Dimensions & Performance Data**

d	2,953 in	Bore diameter
D	6,299 in	Outside diameter
B	1,457 in	Width
C_r	27.652,878 lbf	Basic dynamic load rating, radial
C_{0r}	17.311,151 lbf	Basic static load rating, radial
C_{ur}	1.090,378 lbf	Fatigue load limit, radial
n_G	6.300 1/min	Limiting speed
n_{gr}	5.800 1/min	Reference speed
	7,055 lbs	{Weight}

Mounting dimensions

$d_{a \min}$	3,425 in	Minimum diameter shaft shoulder
$D_{a \max}$	5,827 in	Maximum diameter of housing shoulder
$r_{a \max}$	0,083 in	Maximum fillet radius

Dimensions

r_{\min}	0,083 in	Minimum chamfer dimension
D_2	5,402 in	Caliber diameter outer ring
d_1	3,992 in	Shoulder diameter inner ring

Temperature range

T_{\min}	-22 °F	Operating temperature min.
T_{\max}	302 °F	Operating temperature max.

Calculation factors

f_0	13,2	Calculation factor
-------	------	--------------------