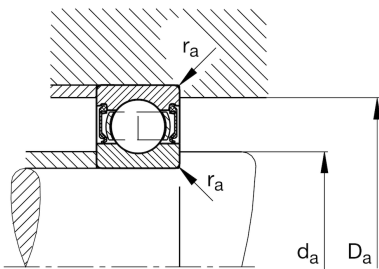
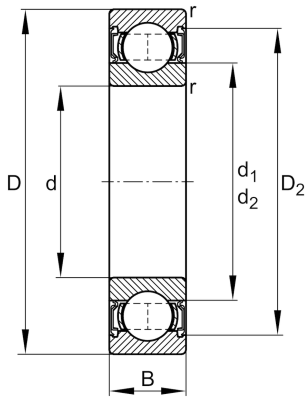


**FAG****6317-2RSR-C3**

Deep groove ball bearing

Schaeffler ID:  
0167242400030Deep groove ball bearing 63...-2RSR,  
single row, seals, steel sheet metal cage

## Technical information

**Main Dimensions & Performance Data**

d	3,346 in	Bore diameter
D	7,087 in	Outside diameter
B	1,614 in	Width
$C_r$	31.699,64 lbf	Basic dynamic load rating, radial
$C_{0r}$	21.807,554 lbf	Basic static load rating, radial
$C_{ur}$	1.348,921 lbf	Fatigue load limit, radial
$n_G$	2.350 1/min	Limiting speed
	9,656 lbs	Weight

**Mounting dimensions**

$d_{a \min}$	3,898 in	Minimum diameter shaft shoulder
$D_{a \max}$	6,535 in	Maximum diameter of housing shoulder
$r_{a \max}$	0,098 in	Maximum fillet radius

**Dimensions**

$r_{\min}$	0,118 in	Minimum chamfer dimension
$D_2$	6,098 in	Caliber diameter outer ring
$d_1$	4,488 in	Shoulder diameter inner ring

**Temperature range**

$T_{\min}$	-4 °F	Operating temperature min.
$T_{\max}$	212 °F	Operating temperature max.

**Calculation factors**

$f_0$	13,3	Calculation factor
-------	------	--------------------