

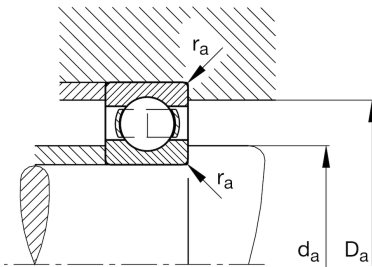
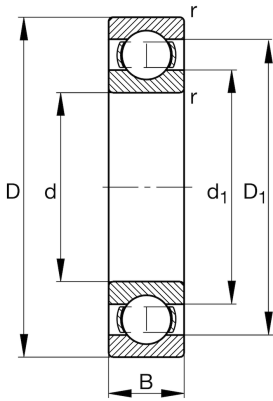
FAG

6318-M-C4

Deep groove ball bearing

Schaeffler ID:
0191114870040Deep groove ball bearing 63.-M, single
row, solid brass cage

Technical information

**Main Dimensions & Performance Data**

d	3,543 in	Bore diameter
D	7,48 in	Outside diameter
B	1,693 in	Width
C_r	31.924,46 lbf	Basic dynamic load rating, radial
C_{0r}	22.931,655 lbf	Basic static load rating, radial
C_{ur}	1.326,439 lbf	Fatigue load limit, radial
n_G	6.300 1/min	Limiting speed
n_{gr}	5.100 1/min	Reference speed
	13,669 lbs	{Weight}

Mounting dimensions

$d_{a \min}$	4,094 in	Minimum diameter shaft shoulder
$D_{a \max}$	6,929 in	Maximum diameter of housing shoulder
$r_{a \max}$	0,098 in	Maximum fillet radius

Dimensions

r_{\min}	0,118 in	Minimum chamfer dimension
D_1	6,188 in	Shoulder diameter outer ring
d_1	4,869 in	Shoulder diameter inner ring

Temperature range

T_{\min}	-22 °F	Operating temperature min.
T_{\max}	302 °F	Operating temperature max.

Calculation factors

f_0	13,9	Calculation factor
-------	------	--------------------