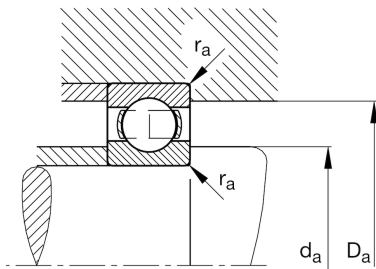
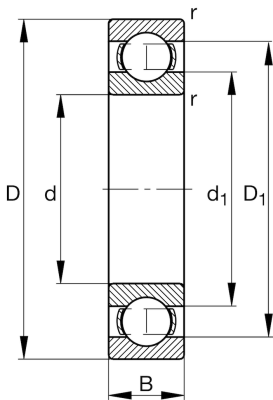


**FAG****6320-C3**

Deep groove ball bearing

Schaeffler ID:  
0167244020030Deep groove ball bearing 63, single row,  
steel sheet metal cage

## Technical information



## Main Dimensions &amp; Performance Data

d	3,937 in	Bore diameter
D	8,465 in	Outside diameter
B	1,85 in	Width
$C_r$	39.793,165 lbf	Basic dynamic load rating, radial
$C_{0r}$	30.800,36 lbf	Basic static load rating, radial
$C_{ur}$	1.663,669 lbf	Fatigue load limit, radial
$n_G$	4.250 1/min	Limiting speed
$n_{gr}$	4.600 1/min	Reference speed
	16,301 lbs	{Weight}

## Mounting dimensions

$d_{a \min}$	4,488 in	Minimum diameter shaft shoulder
$D_{a \max}$	7,913 in	Maximum diameter of housing shoulder
$r_{a \max}$	0,098 in	Maximum fillet radius

## Dimensions

$r_{\min}$	0,118 in	Minimum chamfer dimension
$D_1$	7,053 in	Shoulder diameter outer ring
$d_1$	5,453 in	Shoulder diameter inner ring

## Temperature range

$T_{\min}$	-22 °F	Operating temperature min.
$T_{\max}$	302 °F	Operating temperature max.

## Calculation factors

$f_0$	13,7	Calculation factor
-------	------	--------------------