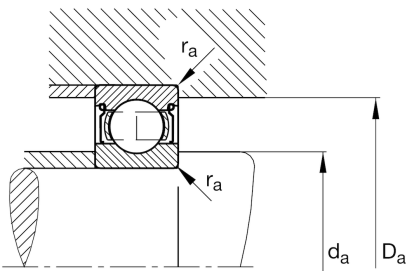
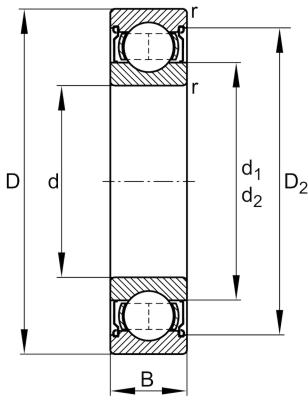


**FAG****6320-Z**

Deep groove ball bearing

Schaeffler ID:
0191117460000Deep groove ball bearing 63...-Z, single
row, shield, steel sheet metal cage

Technical information

**Main Dimensions & Performance Data**

d	3,937 in	Bore diameter
D	8,465 in	Outside diameter
B	1,85 in	Width
C_r	39.793,165 lbf	Basic dynamic load rating, radial
C_{0r}	30.800,36 lbf	Basic static load rating, radial
C_{ur}	1.663,669 lbf	Fatigue load limit, radial
n_G	4.250 1/min	Limiting speed
n_{gr}	4.600 1/min	Reference speed
	16,976 lbs	{Weight}

Mounting dimensions

$d_{a \min}$	4,488 in	Minimum diameter shaft shoulder
$D_{a \max}$	7,913 in	Maximum diameter of housing shoulder
$r_{a \max}$	0,098 in	Maximum fillet radius

Dimensions

r_{\min}	0,118 in	Minimum chamfer dimension
D_2	7,267 in	Caliber diameter outer ring
d_1	5,437 in	Shoulder diameter inner ring

Temperature range

T_{\min}	-22 °F	Operating temperature min.
T_{\max}	302 °F	Operating temperature max.

Calculation factors

f_0	13,7	Calculation factor
-------	------	--------------------