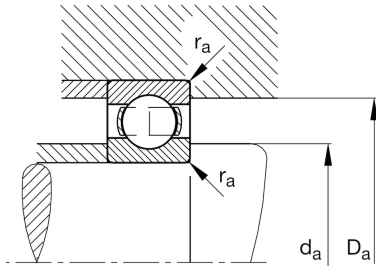
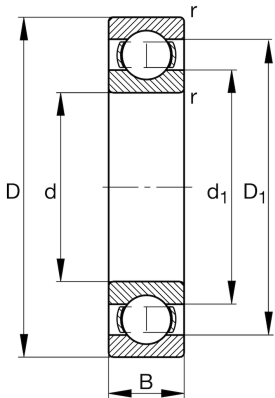


**FAG****6321-C3**

Deep groove ball bearing

Schaeffler ID:
0167244450030Deep groove ball bearing 63, single row,
steel sheet metal cage

Technical information

**Main Dimensions & Performance Data**

| | | |
|----------|----------------|-----------------------------------|
| d | 4,134 in | Bore diameter |
| D | 8,858 in | Outside diameter |
| B | 1,929 in | Width |
| C_r | 42.266,187 lbf | Basic dynamic load rating, radial |
| C_{0r} | 33.723,022 lbf | Basic static load rating, radial |
| C_{ur} | 1.821,043 lbf | Fatigue load limit, radial |
| n_G | 4.050 1/min | Limiting speed |
| n_{gr} | 4.450 1/min | Reference speed |
| | 19,18 lbs | {Weight} |

Mounting dimensions

| | | |
|--------------|----------|--------------------------------------|
| $d_{a \min}$ | 4,685 in | Minimum diameter shaft shoulder |
| $D_{a \max}$ | 8,307 in | Maximum diameter of housing shoulder |
| $r_{a \max}$ | 0,098 in | Maximum fillet radius |

Dimensions

| | | |
|------------|----------|------------------------------|
| r_{\min} | 0,118 in | Minimum chamfer dimension |
| D_1 | 7,398 in | Shoulder diameter outer ring |
| d_1 | 5,681 in | Shoulder diameter inner ring |

Temperature range

| | | |
|------------|--------|----------------------------|
| T_{\min} | -22 °F | Operating temperature min. |
| T_{\max} | 302 °F | Operating temperature max. |

Calculation factors

| | | |
|-------|------|--------------------|
| f_0 | 13,7 | Calculation factor |
|-------|------|--------------------|