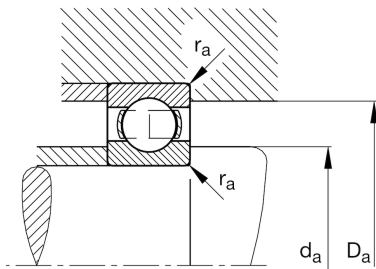
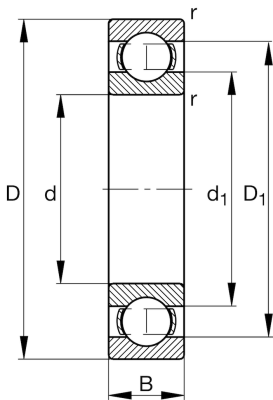


**FAG****6324-C3**

Deep groove ball bearing

Schaeffler ID:  
0167245000030Deep groove ball bearing 63, single row,  
steel sheet metal cage

## Technical information

**Main Dimensions & Performance Data**

d	4,724 in	Bore diameter
D	10,236 in	Outside diameter
B	2,165 in	Width
$C_r$	50.584,532 lbf	Basic dynamic load rating, radial
$C_{0r}$	43.839,928 lbf	Basic static load rating, radial
$C_{ur}$	2.203,237 lbf	Fatigue load limit, radial
$n_G$	3.500 1/min	Limiting speed
$n_{gr}$	3.800 1/min	Reference speed
	27,999 lbs	{Weight}

**Mounting dimensions**

$d_{a \min}$	5,276 in	Minimum diameter shaft shoulder
$D_{a \max}$	9,685 in	Maximum diameter of housing shoulder
$r_{a \max}$	0,098 in	Maximum fillet radius

**Dimensions**

$r_{\min}$	0,118 in	Minimum chamfer dimension
$D_1$	8,488 in	Shoulder diameter outer ring
$d_1$	6,528 in	Shoulder diameter inner ring

**Temperature range**

$T_{\min}$	-22 °F	Operating temperature min.
$T_{\max}$	392 °F	Operating temperature max.

**Calculation factors**

$f_0$	13,8	Calculation factor
-------	------	--------------------