

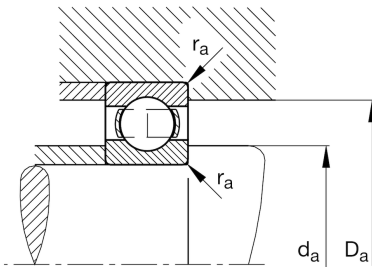
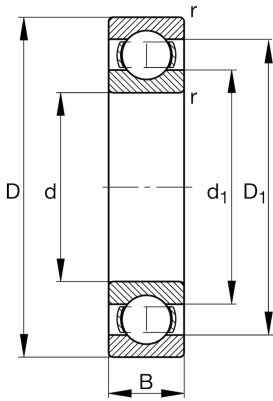
FAG

**6330-M-C3**

Deep groove ball bearing

Schaeffler ID:  
0191120840030Deep groove ball bearing 63..-M, single  
row, solid brass cage

## Technical information

**Main Dimensions & Performance Data**

d	5,906 in	Bore diameter
D	12,598 in	Outside diameter
B	2,559 in	Width
$C_r$	67.446,043 lbf	Basic dynamic load rating, radial
$C_{0r}$	65.197,842 lbf	Basic static load rating, radial
$C_{ur}$	3.035,072 lbf	Fatigue load limit, radial
$n_G$	3.600 1/min	Limiting speed
$n_{gr}$	3.000 1/min	Reference speed
	58,422 lbs	{Weight}

**Mounting dimensions**

$d_{a \min}$	6,575 in	Minimum diameter shaft shoulder
$D_{a \max}$	11,929 in	Maximum diameter of housing shoulder
$r_{a \max}$	0,118 in	Maximum fillet radius

**Dimensions**

$r_{\min}$	0,157 in	Minimum chamfer dimension
$D_1$	10,48 in	Shoulder diameter outer ring
$d_1$	8,091 in	Shoulder diameter inner ring

**Temperature range**

$T_{\min}$	-22 °F	Operating temperature min.
$T_{\max}$	392 °F	Operating temperature max.

**Calculation factors**

$f_0$	13,7	Calculation factor
-------	------	--------------------