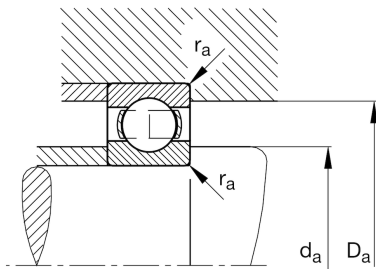
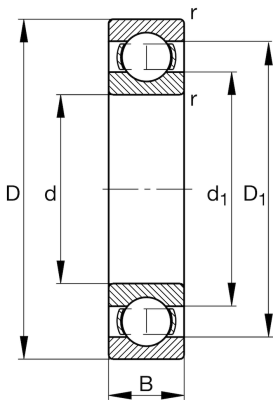


**FAG****6408-C3**

Deep groove ball bearing

Schaeffler ID:
0167247120030Deep groove ball bearing 64, single row,
steel sheet metal cage

Technical information

**Main Dimensions & Performance Data**

d	1,575 in	Bore diameter
D	4,331 in	Outside diameter
B	1,063 in	Width
C_r	15,287,77 lbf	Basic dynamic load rating, radial
C_{0r}	8,655,576 lbf	Basic static load rating, radial
C_{ur}	595,773 lbf	Fatigue load limit, radial
n_G	9.500 1/min	Limiting speed
n_{gr}	7.400 1/min	Reference speed
	2,694 lbs	{Weight}

Mounting dimensions

$d_{a \min}$	2,087 in	Minimum diameter shaft shoulder
$D_{a \max}$	3,819 in	Maximum diameter of housing shoulder
$r_{a \max}$	0,079 in	Maximum fillet radius

Dimensions

r_{\min}	0,079 in	Minimum chamfer dimension
D_1	3,615 in	Shoulder diameter outer ring
d_1	2,677 in	Shoulder diameter inner ring

Temperature range

T_{\min}	-22 °F	Operating temperature min.
T_{\max}	302 °F	Operating temperature max.

Calculation factors

f_0	13,3	Calculation factor
-------	------	--------------------