



FAG

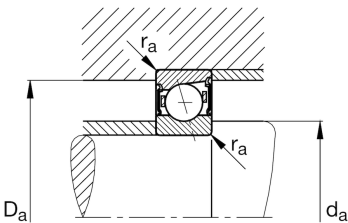
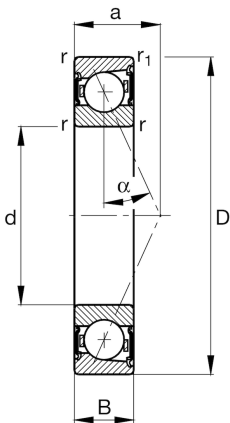
B7000-E-2RSD-T-P4S-UL

Spindle bearing

Schaeffler ID:
0387235060000

Spindle bearings B70...-E-2RSD, adjusted, in pairs or sets, contact angle $\alpha = 25^\circ$, lip seals on both sides, non-contact, restricted tolerances

Technical information



Main Dimensions & Performance Data

d	0,394 in	Bore diameter
D	1,024 in	Outside diameter
B	0,315 in	Width
C _r	888,04 lbf	Basic dynamic load rating, radial
C _{0r}	316,996 lbf	Basic static load rating, radial
C _{ur}	33,498 lbf	Fatigue load limit, radial
n _{G Grease}	60.000 1/min	Limiting speed for grease lubrication
	0,6 oz	Weight

Mounting dimensions

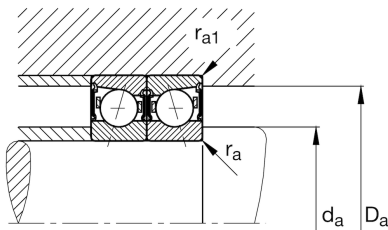
d _a	0,551 in	Diameter shaft shoulder
d _a	h12	Diameter shaft shoulder clearance
D _a	0,866 in	Shoulder diameter outer ring
D _a	H12	Shoulder diameter outer ring clearance
r _{a max}	0,012 in	Maximum recess radius
r _{a1 max}	0,004 in	Maximum recess radius
a	0,323 in	Distance between the apexes of the pressure cones

Dimensions

r _{min}	0,012 in	Minimum chamfer dimension
r _{1 min}	0,012 in	Minimum chamfer dimension
α	25 °	Contact angle

Temperature range

T _{min}	-22 °F	Operating temperature min.
T _{max}	176 °F	Operating temperature max.



Additional information

F_{VL}	4,721 lbf	Preload force light
F_{VM}	22,257 lbf	Preload force medium
F_{VH}	50,135 lbf	Preload force heavy
K_{aEL}	13,714 lbf	Lift-off force light
K_{aEM}	66,996 lbf	Lift-off force medium
K_{aEH}	156,924 lbf	Lift-off force heavy
c_{aL}	27,6 N/μm	Axial rigidity light
c_{aM}	49,2 N/μm	Axial rigidity medium
c_{aH}	69,1 N/μm	Axial rigidity heavy