



FAG

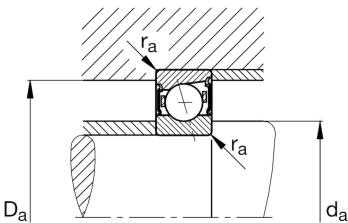
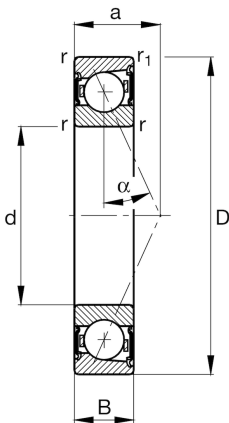
B7020-E-2RSD-T-P4S-UL

Spindle bearing

Schaeffler ID:  
0191524180000

Spindle bearings B70...-E-2RSD, adjusted, in pairs or sets, contact angle  $\alpha = 25^\circ$ , lip seals on both sides, non-contact, restricted tolerances

Technical information



Main Dimensions & Performance Data

d	3,937 in	Bore diameter
D	5,906 in	Outside diameter
B	0,945 in	Width
C <sub>r</sub>	17.760,791 lbf	Basic dynamic load rating, radial
C <sub>0r</sub>	12.365,108 lbf	Basic static load rating, radial
C <sub>ur</sub>	1.169,065 lbf	Fatigue load limit, radial
n <sub>G Grease</sub>	8.000 1/min	Limiting speed for grease lubrication
	2,756 lbs	Weight

Mounting dimensions

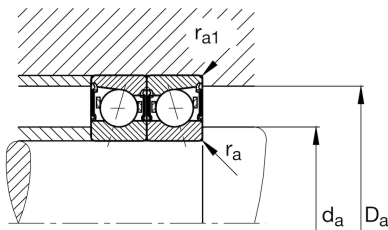
d <sub>a</sub>	4,331 in	Diameter shaft shoulder
d <sub>a</sub>	h12	Diameter shaft shoulder clearance
D <sub>a</sub>	5,551 in	Shoulder diameter outer ring
D <sub>a</sub>	H12	Shoulder diameter outer ring clearance
r <sub>a max</sub>	0,059 in	Maximum recess radius
r <sub>a1 max</sub>	0,024 in	Maximum recess radius
a	1,618 in	Distance between the apexes of the pressure cones

Dimensions

r <sub>min</sub>	0,059 in	Minimum chamfer dimension
r <sub>1 min</sub>	0,059 in	Minimum chamfer dimension
$\alpha$	25 °	Contact angle

Temperature range

T <sub>min</sub>	-22 °F	Operating temperature min.
T <sub>max</sub>	176 °F	Operating temperature max.



Additional information

$F_{VL}$	153,103 lbf	Preload force light
$F_{VM}$	525,18 lbf	Preload force medium
$F_{VH}$	1.094,649 lbf	Preload force heavy
$K_{aEL}$	445,594 lbf	Lift-off force light
$K_{aEM}$	1.577,788 lbf	Lift-off force medium
$K_{aEH}$	3.395,459 lbf	Lift-off force heavy
$c_{aL}$	242 N/ $\mu$ m	Axial rigidity light
$c_{aM}$	385 N/ $\mu$ m	Axial rigidity medium
$c_{aH}$	521 N/ $\mu$ m	Axial rigidity heavy