

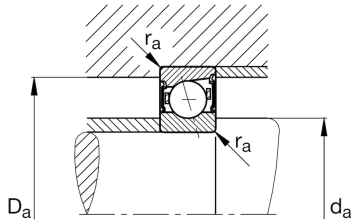
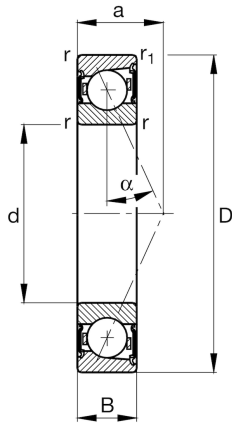
FAG

B71912-C-2RSD-T-P4S-UL

Spindle bearing

Schaeffler ID:
0387227980000Spindle bearings B719..-C-2RSD, adjusted, in pairs or sets, contact angle $\alpha = 15^\circ$, lip seals on both sides, non-contact, restricted tolerances

Technical information

**Main Dimensions & Performance Data**

d	2,362 in	Bore diameter
D	3,346 in	Outside diameter
B	0,512 in	Width
C_r	5.553,058 lbf	Basic dynamic load rating, radial
C_{0r}	3.597,122 lbf	Basic static load rating, radial
C_{ur}	379,946 lbf	Fatigue load limit, radial
$n_{G \text{ Grease}}$	16.000 1/min	Limiting speed for grease lubrication
	6,903 oz	{Weight}

Mounting dimensions

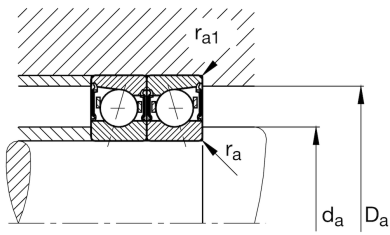
d_a	2,559 in	Diameter shaft shoulder
d_a	h12	Diameter shaft shoulder clearance
D_a	3,169 in	Shoulder diameter outer ring
D_a	H12	Shoulder diameter outer ring clearance
$r_{a \text{ max}}$	0,024 in	Maximum recess radius
$r_{a1 \text{ max}}$	0,012 in	Maximum recess radius
a	0,638 in	Distance between the apexes of the pressure cones

Dimensions

r_{min}	0,039 in	Minimum chamfer dimension
$r_{1 \text{ min}}$	0,039 in	Minimum chamfer dimension
α	15 °	Contact angle

Temperature range

T_{min}	-22 °F	Operating temperature min.
T_{max}	176 °F	Operating temperature max.



Additional information

F_{VL}	26,079 lbf	Preload force light
F_{VM}	90,153 lbf	Preload force medium
F_{VH}	184,802 lbf	Preload force heavy
K_{aEL}	79,586 lbf	Lift-off force light
K_{aEM}	299,685 lbf	Lift-off force medium
K_{aEH}	656,25 lbf	Lift-off force heavy
c_{aL}	54,5 N/ μ m	Axial rigidity light
c_{aM}	95,1 N/ μ m	Axial rigidity medium
c_{aH}	137 N/ μ m	Axial rigidity heavy