

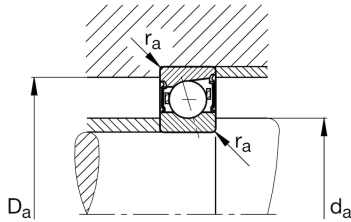
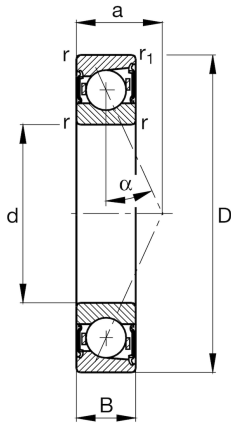
FAG

**B71917-E-2RSD-T-P4S-UL**

Spindle bearing

Schaeffler ID:  
0386846750000Spindle bearing B719...E-2RSD, adjusted, in pairs or sets, contact angle  $\alpha = 25^\circ$ , lip seals on both sides, non-contact, restricted tolerances

## Technical information

**Main Dimensions & Performance Data**

d	3,346 in	Bore diameter
D	4,724 in	Outside diameter
B	0,709 in	Width
$C_r$	10.004,496 lbf	Basic dynamic load rating, radial
$C_{0r}$	7.081,835 lbf	Basic static load rating, radial
$C_{ur}$	741,906 lbf	Fatigue load limit, radial
$n_{G \text{ Grease}}$	10.000 1/min	Limiting speed for grease lubrication
	1,162 lbs	{Weight}

**Mounting dimensions**

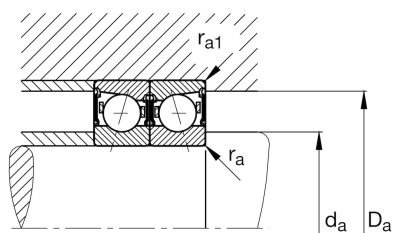
$d_a$	3,622 in	Diameter shaft shoulder
$d_a$	h12	Diameter shaft shoulder clearance
$D_a$	4,488 in	Shoulder diameter outer ring
$D_a$	H12	Shoulder diameter outer ring clearance
$r_{a \text{ max}}$	0,024 in	Maximum recess radius
$r_{a1 \text{ max}}$	0,024 in	Maximum recess radius
a	1,295 in	Distance between the apexes of the pressure cones

**Dimensions**

$r_{\text{min}}$	0,043 in	Minimum chamfer dimension
$r_{1 \text{ min}}$	0,043 in	Minimum chamfer dimension
$\alpha$	25 °	Contact angle

**Temperature range**

$T_{\text{min}}$	-22 °F	Operating temperature min.
$T_{\text{max}}$	176 °F	Operating temperature max.



### Additional information

$F_{VL}$	74,865 lbf	Preload force light
$F_{VM}$	275,629 lbf	Preload force medium
$F_{VH}$	586,556 lbf	Preload force heavy
$K_{aEL}$	217,626 lbf	Lift-off force light
$K_{aEM}$	826,214 lbf	Lift-off force medium
$K_{aEH}$	1.815,198 lbf	Lift-off force heavy
$c_{aL}$	184 N/ $\mu$ m	Axial rigidity light
$c_{aM}$	301 N/ $\mu$ m	Axial rigidity medium
$c_{aH}$	409 N/ $\mu$ m	Axial rigidity heavy