

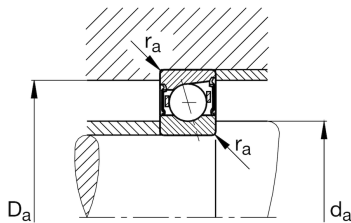
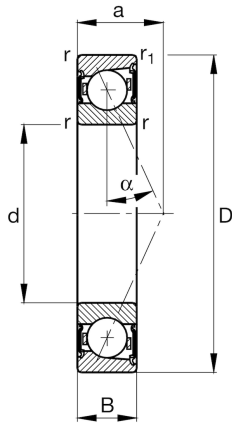
FAG

B7207-C-2RSD-T-P4S-UL

Spindle bearing

Schaeffler ID:
0191561700000Spindle bearings B72...-C-2RSD, adjusted, in pairs or sets, contact angle $\alpha = 15^\circ$, lip seals on both sides, non-contact, restricted tolerances

Technical information

**Main Dimensions & Performance Data**

d	1,378 in	Bore diameter
D	2,835 in	Outside diameter
B	0,669 in	Width
C_r	5.732,914 lbf	Basic dynamic load rating, radial
C_{0r}	2.832,734 lbf	Basic static load rating, radial
C_{ur}	301,259 lbf	Fatigue load limit, radial
$n_{G \text{ Grease}}$	20.000 1/min	Limiting speed for grease lubrication
	0,622 lbs	{Weight}

Mounting dimensions

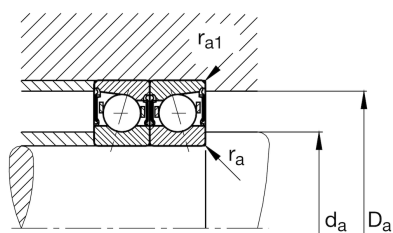
d_a	1,732 in	Diameter shaft shoulder
d_a	h12	Diameter shaft shoulder clearance
D_a	2,48 in	Shoulder diameter outer ring
D_a	H12	Shoulder diameter outer ring clearance
$r_{a \text{ max}}$	0,039 in	Maximum recess radius
$r_{a1 \text{ max}}$	0,012 in	Maximum recess radius
a	0,618 in	Distance between the apexes of the pressure cones

Dimensions

r_{min}	0,043 in	Minimum chamfer dimension
$r_{1 \text{ min}}$	0,043 in	Minimum chamfer dimension
α	15 °	Contact angle

Temperature range

T_{min}	-22 °F	Operating temperature min.
T_{max}	176 °F	Operating temperature max.



Additional information

F_{VL}	30,126 lbf	Preload force light
F_{VM}	99,595 lbf	Preload force medium
F_{VH}	199,415 lbf	Preload force heavy
K_{aEL}	93,975 lbf	Lift-off force light
K_{aEM}	337,23 lbf	Lift-off force medium
K_{aEH}	724,595 lbf	Lift-off force heavy
c_{aL}	44,8 N/ μ m	Axial rigidity light
c_{aM}	77,8 N/ μ m	Axial rigidity medium
c_{aH}	112 N/ μ m	Axial rigidity heavy