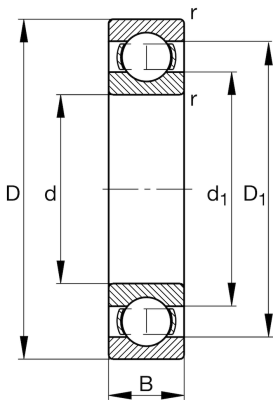


**FAG****16003-A**

Deep groove ball bearing

Schaeffler ID:
0604511140000Deep groove ball bearing 160.-A, single
row, steel sheet metal cage

Technical information

**Main Dimensions & Performance Data**

d	0,669 in	Bore diameter
D	1,378 in	Outside diameter
B	0,315 in	Width
C_r	1.348,921 lbf	Basic dynamic load rating, radial
C_{0r}	730,665 lbf	Basic static load rating, radial
C_{ur}	46,538 lbf	Fatigue load limit, radial
n_G	31.000 1/min	Limiting speed
n_{gr}	17.700 1/min	Reference speed
	0,071 lbs	Weight

Mounting dimensions

$d_{a\ min}$	0,748 in	Minimum diameter shaft shoulder
$D_{a\ max}$	1,299 in	Maximum diameter of housing shoulder
$r_{a\ max}$	0,012 in	Maximum fillet radius

Dimensions

$r_{\ min}$	0,012 in	Minimum chamfer dimension
D_1	1,16 in	Shoulder diameter outer ring
d_1	0,898 in	Shoulder diameter inner ring

Temperature range

$T_{\ min}$	-22 °F	Operating temperature min.
$T_{\ max}$	248 °F	Operating temperature max.

Calculation factors

f_0	14,3	Calculation factor
-------	------	--------------------