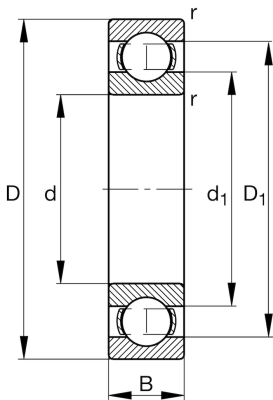


**FAG****16007-A**

Deep groove ball bearing

Schaeffler ID:
0389043900000Deep groove ball bearing 160..-A, single
row, steel sheet metal cage

Technical information

**Main Dimensions & Performance Data**

d	1,378 in	Bore diameter
D	2,441 in	Outside diameter
B	0,354 in	Width
C_r	2.756,295 lbf	Basic dynamic load rating, radial
C_{0r}	1.978,417 lbf	Basic static load rating, radial
C_{ur}	121,403 lbf	Fatigue load limit, radial
n_G	16.700 1/min	Limiting speed
n_{gr}	8.900 1/min	Reference speed
	0,245 lbs	$\{Weight\}$

Mounting dimensions

$d_{a\ min}$	1,457 in	Minimum diameter shaft shoulder
$D_{a\ max}$	2,362 in	Maximum diameter of housing shoulder
$r_{a\ max}$	0,012 in	Maximum fillet radius

Dimensions

r_{\min}	0,012 in	Minimum chamfer dimension
D_1	2,076 in	Shoulder diameter outer ring
d_1	1,743 in	Shoulder diameter inner ring

Temperature range

T_{\min}	-22 °F	Operating temperature min.
T_{\max}	248 °F	Operating temperature max.

Calculation factors

f_0	15,6	Calculation factor
-------	------	--------------------