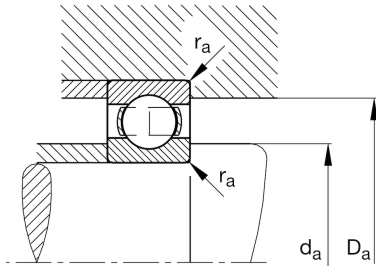
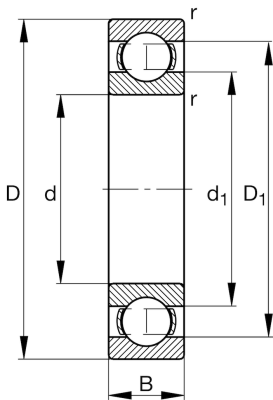


**FAG****16018-C3**

Deep groove ball bearing

Schaeffler ID:  
0167011940030Deep groove ball bearing 160, single row,  
steel sheet metal cage

## Technical information

**Main Dimensions & Performance Data**

d	3,543 in	Bore diameter
D	5,512 in	Outside diameter
B	0,63 in	Width
$C_r$	9.892,086 lbf	Basic dynamic load rating, radial
$C_{0r}$	8.880,396 lbf	Basic static load rating, radial
$C_{ur}$	467,626 lbf	Fatigue load limit, radial
$n_G$	6.800 1/min	Limiting speed
$n_{gr}$	4.400 1/min	Reference speed
	1,909 lbs	{Weight}

**Mounting dimensions**

$d_{a \min}$	3,724 in	Minimum diameter shaft shoulder
$D_{a \max}$	5,331 in	Maximum diameter of housing shoulder
$r_{a \max}$	0,039 in	Maximum fillet radius

**Dimensions**

$r_{\min}$	0,039 in	Minimum chamfer dimension
$D_1$	4,831 in	Shoulder diameter outer ring
$d_1$	4,235 in	Shoulder diameter inner ring

**Temperature range**

$T_{\min}$	-22 °F	Operating temperature min.
$T_{\max}$	302 °F	Operating temperature max.

**Calculation factors**

$f_0$	16,4	Calculation factor
-------	------	--------------------