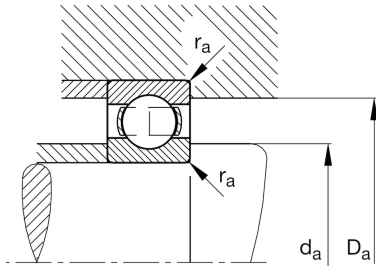
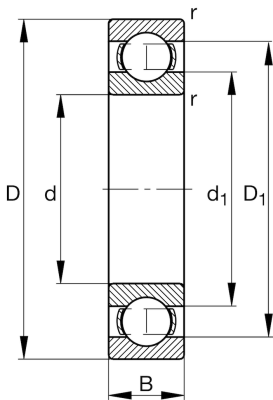


**FAG****16048-C3**

Deep groove ball bearing

Schaeffler ID:  
0167013720030Deep groove ball bearing 160, single row,  
steel sheet metal cage

## Technical information



## Main Dimensions &amp; Performance Data

|          |                |                                   |
|----------|----------------|-----------------------------------|
| d        | 9,449 in       | Bore diameter                     |
| D        | 14,173 in      | Outside diameter                  |
| B        | 1,457 in       | Width                             |
| $C_r$    | 45.638,489 lbf | Basic dynamic load rating, radial |
| $C_{0r}$ | 57.329,137 lbf | Basic static load rating, radial  |
| $C_{ur}$ | 1.955,935 lbf  | Fatigue load limit, radial        |
| $n_G$    | 2.450 1/min    | Limiting speed                    |
| $n_{gr}$ | 2.100 1/min    | Reference speed                   |
|          | 27,999 lbs     | Weight                            |

## Mounting dimensions

|              |           |                                      |
|--------------|-----------|--------------------------------------|
| $d_{a \min}$ | 9,85 in   | Minimum diameter shaft shoulder      |
| $D_{a \max}$ | 13,772 in | Maximum diameter of housing shoulder |
| $r_{a \max}$ | 0,083 in  | Maximum fillet radius                |

## Dimensions

|            |           |                              |
|------------|-----------|------------------------------|
| $r_{\min}$ | 0,083 in  | Minimum chamfer dimension    |
| $D_1$      | 12,504 in | Shoulder diameter outer ring |
| $d_1$      | 11,144 in | Shoulder diameter inner ring |

## Temperature range

|            |        |                            |
|------------|--------|----------------------------|
| $T_{\min}$ | -22 °F | Operating temperature min. |
| $T_{\max}$ | 392 °F | Operating temperature max. |

## Calculation factors

|       |      |                    |
|-------|------|--------------------|
| $f_0$ | 16,4 | Calculation factor |
|-------|------|--------------------|