

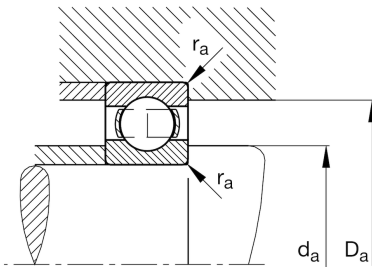
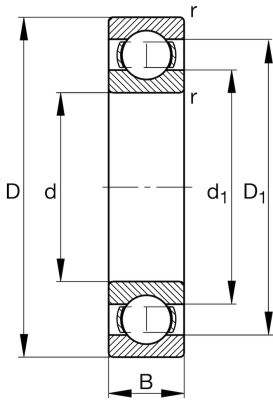
FAG

16052-M

Deep groove ball bearing

Schaeffler ID:
0190118650000Deep groove ball bearing 160..-M, single
row, solid brass cage

Technical information

**Main Dimensions & Performance Data**

d	10,236 in	Bore diameter
D	15,748 in	Outside diameter
B	1,732 in	Width
C_r	53.282,374 lbf	Basic dynamic load rating, radial
C_{0r}	69.694,245 lbf	Basic static load rating, radial
C_{ur}	2.293,165 lbf	Fatigue load limit, radial
n_G	2.850 1/min	Limiting speed
n_{gr}	1.960 1/min	Reference speed
	47,62 lbs	{Weight}

Mounting dimensions

$d_{a \min}$	10,724 in	Minimum diameter shaft shoulder
$D_{a \max}$	15,26 in	Maximum diameter of housing shoulder
$r_{a \max}$	0,098 in	Maximum fillet radius

Dimensions

r_{\min}	0,118 in	Minimum chamfer dimension
D_1	13,827 in	Shoulder diameter outer ring
d_1	12,205 in	Shoulder diameter inner ring

Temperature range

T_{\min}	-22 °F	Operating temperature min.
T_{\max}	392 °F	Operating temperature max.

Calculation factors

f_0	16,4	Calculation factor
-------	------	--------------------