

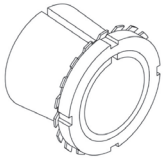
# Adapter Sleeves

## H200 Series H3000 Series

### Metric & Inch Bores

For 200 and 230 Series

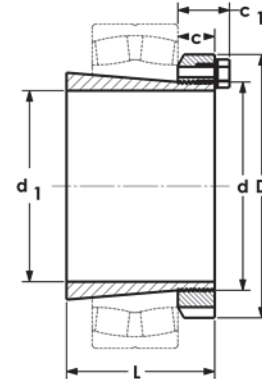
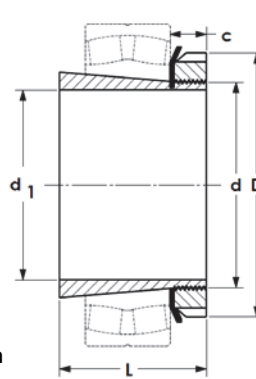
Spherical Bearings



Models Available



Sizes thru 40 with  
nut and washer



Sizes 44 and up  
with locking clip

### H200 Series

Metric Bore		Inch Bore		Other Stock Bores	Dimensions (mm)					Nut	Lock Washer	Weight kg
Part No.	d <sub>1</sub>	Part No.	d <sub>1</sub>		d	L	D	c	c <sub>1</sub>			
H204	17	—	—	—	20	24	32	7	—	KM4	MB4	0.1
H205	20	H205 x 3/4	3/4	—	25	26	38	8	—	KM5	MB5	0.1
H206	25	H206 x 1	1	—	30	27	45	8	—	KM6	MB6	0.1
H207	30	H207 x 1-3/16	1-3/16	—	35	29	52	9	—	KM7	MB7	0.1
H208	35	H208 x 1-1/4	1-1/4	—	40	31	58	10	—	KM8	MB8	0.2
H209	40	H209 x 1-7/16	1-7/16	1-1/2	45	33	65	11	—	KM9	MB9	0.2
H210	45	H210 x 1-11/16	1-11/16	1-3/4	50	35	70	12	—	KM10	MB10	0.3
H211	50	H211 x 1-15/16	1-15/16	2	55	37	75	12	—	KM11	MB22	0.3
H212	55	—	—	—	60	38	80	13	—	KM12	MB12	0.4
H213	60	H213 x 2-3/16	2-3/16	2-1/4	65	40	85	14	—	KM13	MB13	0.4
H214	60	—	—	—	70	41	92	14	—	KM14	MB14	0.6
H215	65	H215 x 2-7/16	2-7/16	2-1/2	75	43	98	15	—	KM15	MB15	0.7
H216	70	H216 x 2-11/16	2-11/16	2-3/4	80	46	105	17	—	KM16	MB16	0.9
H217	75	H217 x 2-15/16	2-15/16	3	85	50	110	18	—	KM17	MB17	1.0
H218	80	H218 x 3-3/16	3-3/16	—	90	52	120	18	—	KM18	MB18	1.2
H219	85	H219 x 3-1/4	3-1/4	—	95	55	125	19	—	KM19	MB19	1.3
H220	90	H220 x 3-7/16	3-7/16	3-1/2	100	58	130	20	—	KM20	MB20	1.5
H221	95	—	—	—	105	60	140	20	—	KM21	MB21	1.7
H222	100	H222 x 4	4	—	110	63	145	21	—	KM22	MB22	1.9

### H3000 Series

Metric Bore		Inch Bore		Other Stock Bores	Dimensions (mm)					Nut	Lock Washer	Weight kg
Part No.	d <sub>1</sub>	Part No.	d <sub>1</sub>		d	L	D	c	c <sub>1</sub>			
H3024	110	H3024 x 4-3/16	4-3/16	4-1/4	120	72	145	22	—	KML24	MBL24	2.0
H3026	115	H3026 x 4-7/16	4-7/16	4-1/2	130	80	155	23	—	KML26	MBL26	2.9
H3028	125	H3028 x 4-15/16	4-15/16	5	140	82	165	24	—	KML28	MBL28	3.2
H3030	135	H3030 x 5-3/16	5-3/16	5-1/4	150	87	180	26	—	KML30	MBL30	3.9
H3032	140	H3032 x 5-7/16	5-7/16	5-1/2	160	93	190	27.5	—	KML32	MBL32	5.2
H3034	150	H3034 x 5-15/16	5-15/16	6	170	101	200	28.5	—	KML34	MBL34	6.0
H3036	160	H3036 x 6-7/16	6-7/16	6-1/2	180	109	210	29.5	—	KML36	MBL36	6.9
H3038	170	H3038 x 6-15/16	6-15/16	7	190	112	220	30.5	—	KML38	MBL38	7.5
H3040	180	H3040 x 7-3/16	7-3/16	—	200	120	240	31.5	—	KML40	MBL40	9.2
H3044	200	H3044 x 7-15/16	7-15/16	8	220	128	260	30	41	HM3044	MS3044	10.3
H3048	220	H3048 x 8-7/16	8-7/16	8-1/2, 8-15/16, 9	240	133	290	34	46	HM3048	MS3048	13.2
H3052	240	H3052 x 9-7/16	9-7/16	9-1/2	260	147	310	34	46	HM3052	MS3052	15.3
H3056	260	H3056 x 9-15/16	9-15/16	10, 10-7/16, 10-1/2	280	152	330	38	50	HM3056	MS3056	17.7
H3060	280	H3060 x 10-15/16	10-15/16	11	300	168	360	42	54	HM3060	MS3060	22.8
H3064	300	H3064 x 11-15/16	11-15/16	11-1/2, 12	320	171	380	42	55	HM3064	MS3064	24.6
H3068	320	H3068 x 12-1/2	12-1/2	12-7/16	340	187	400	45	58	HM3068	MS3068	28.7
H3072	340	H3072 x 12-15/16	12-15/16	13, 13-7/16	360	188	420	45	58	HM3072	MS3072	30.5
H3076	360	H3076 x 13-15/16	13-15/16	14	380	193	450	48	62	HM3076	MS3076	35.8
H3080	380	H3080 x 15	15	14-15/16	400	210	470	52	66	HM3080	MS3080	41.3
H3084	400	H3084 x 15-3/4	15-3/4	—	420	212	490	52	66	HM3084	MS3084	43.7
H3088	410	H3088 x 16-1/2	16-1/2	—	440	228	520	60	77	HM3088	MS3088	65.2
H3092	430	H3092 x 17	17	—	460	234	540	60	77	HM3092	MS3092	69.5
H3096	450	H3096 x 18	18	—	480	237	560	60	77	HM3096	MS3096	73.3

Note: Hydraulic Adapter sleeves are also available with oil ducts for hydraulic removal.