

**BALDOR • RELIANCE**

---

# Customer information packet

## EJMM3311T-G

7.5HP, 1770RPM, 3PH, 60HZ, 213JM, 3734M, OPSB

Class - None

Division - Not Applicable

## Specifications

Enclosure	OPSB
Frame	213JM
Frame Material	Steel
Frequency	60.00 Hz
Haz Area Class and Group	None
Haz Area Division	Not Applicable
Motor Letter Type	Three Phase
Output @ Frequency	7.500 HP @ 60 HZ
Phase	3
Synchronous Speed @ Frequency	1800 RPM @ 60 HZ
Voltage @ Frequency	230.0 V @ 60 HZ 460.0 V @ 60 HZ
Agency Approvals	CSA EEV NEMA PREMIUM UR CSA
Ambient Temperature	40 °C
Auxillary Box	No Auxillary Box
Auxillary Box Lead Termination	None
Base Indicator	Rigid
Bearing Grease Type	Polyrex EM (-20F +300F)
Blower	None
Current @ Voltage	19.600 A @ 230.0 V 9.800 A @ 460.0 V
Design Code	A
Drip Cover	No Drip Cover
Duty Rating	CONT
Efficiency @ 100% Load	91.0 %
Electrically Isolated Bearing	Not Electrically Isolated
Feedback Device	NO FEEDBACK
Front Shaft Indicator	None
Heater Indicator	No Heater

## Part detail

Revision	E
Type	AC
Mech. spec.	37M556
Base	
Status	PRD/A
Elec. spec.	37WGL863
Layout	37LYM556
Eff. date	07-27-2024
CD Diagram	CD0005
Poles	04
Leads	9#14
Proprietary	False
Created date	01-29-2021

High Voltage Full Load Amps	9.8 a
Insulation Class	H
Inverter Code	Inverter Ready
KVA Code	J
Lifting Lugs	Standard Lifting Lugs
Locked Bearing Indicator	Locked Bearing
Motor Lead Quantity/Wire Size	9 @ 14 AWG
Motor Lead Termination	Flying Leads
Motor Standards	NEMA
Motor Type	3734M
Mounting Arrangement	F1
Number of Poles	4
Overall Length	18.19 IN
Power Factor	79
Product Family	General Purpose
Pulley End Bearing Type	Ball
Pulley Face Code	C-Face
Pulley Shaft Indicator	Tapped & Key
Rodent Screen	Included
Service Factor	1.15
Shaft Diameter	0.875 IN
Shaft Ground Indicator	Shaft Grounding
Shaft Rotation	Reversible
Shaft Slinger Indicator	Shaft Slinger
Speed	1770 rpm
Speed Code	Single Speed
Starting Method	Direct on line
Thermal Device - Bearing	None
Thermal Device - Winding	None
Vibration Sensor Indicator	No Vibration Sensor
Winding Thermal 1	None
Winding Thermal 2	None

**Nameplate**

**NP3553LUA**

<b>CAT.NO.</b>	EJMM3311T-G						
<b>SPEC.</b>	37M556L863G1						
<b>HP</b>	7.5						
<b>VOLTS</b>	230/460						
<b>AMPS</b>	19.6/9.8						
<b>RPM</b>	1770						
<b>FRAME</b>	213JM	<b>HZ</b>	60	<b>PH</b>	3		
<b>SF</b>	1.15	<b>CODE</b>	J	<b>DES</b>	A	<b>CLASS</b>	H
<b>NEMA NOM. EFF</b>	91	<b>PF</b>	79				
<b>RATING</b>	40C AMB-CONT						
<b>CC</b>	010A						
<b>ENCL</b>	OPSB	<b>SN</b>					
<b>DE</b>	6309	<b>ODE</b>	6206				
<b>VPWM INVERTER READY</b>							
<b>CT30-60(2:1) VT3-60(20:1)</b>							
<b>USABLE AT</b>	50HZ 7.5HP 190/380V 23.2/11.6A						SF1.0

**AC Induction Motor Performance Data**

Record # 86443

Preliminary Data Sheet

<b>Winding:</b> 37WGL863-R004		<b>Type:</b> 3734M		<b>Enclosure:</b> OPSB	
<b>Nameplate Data</b>			<b>460 V, 60 Hz: High Voltage Connection</b>		
<b>Rated Output (HP)</b>	7.5	<b>Full Load Torque</b>	22.2 LB-FT		
<b>Volts</b>	230/460	<b>Start Configuration</b>	direct on line		
<b>Full Load Amps</b>	19.6/9.8	<b>Breakdown Torque</b>	74.8 LB-FT		
<b>R.P.M.</b>	1770	<b>Pull-up Torque</b>	37.1 LB-FT		
<b>Hz</b>	60	<b>Locked-rotor Torque</b>	45.4 LB-FT		
<b>NEMA Design Code</b>	A	<b>Starting Current</b>	72 A		
<b>Service Factor (S.F.)</b>	1.15	<b>No-load Current</b>	4.87 A		
<b>NEMA Nom. Eff.</b>	91	<b>Line-line Res. @ 25°C</b>	1.67 Ω		
<b>Rating - Duty</b>	40C AMB-CONT	<b>Temp. Rise @ Rated Load</b>	35°C		
<b>S.F. Amps</b>		<b>Temp. Rise @ S.F. Load</b>	47°C		
		<b>Locked-rotor Power Factor</b>	45.8		
		<b>Rotor inertia</b>	0.836 lb-ft <sup>2</sup>		

**Load Characteristics 460 V, 60 Hz, 7.5 HP**

<b>% of Rated Load</b>	<b>25</b>	<b>50</b>	<b>75</b>	<b>100</b>	<b>125</b>	<b>150</b>	<b>S.F.</b>
<b>Power Factor</b>	39	60	73	79	82	83	81
<b>Efficiency</b>	85	90.1	91.1	90.9	90.1	89	90.3
<b>Speed</b>	1793	1786	1779	1772	1764	1755	1766
<b>Line amperes</b>	5.34	6.47	7.99	9.87	11.9	14.2	11.1

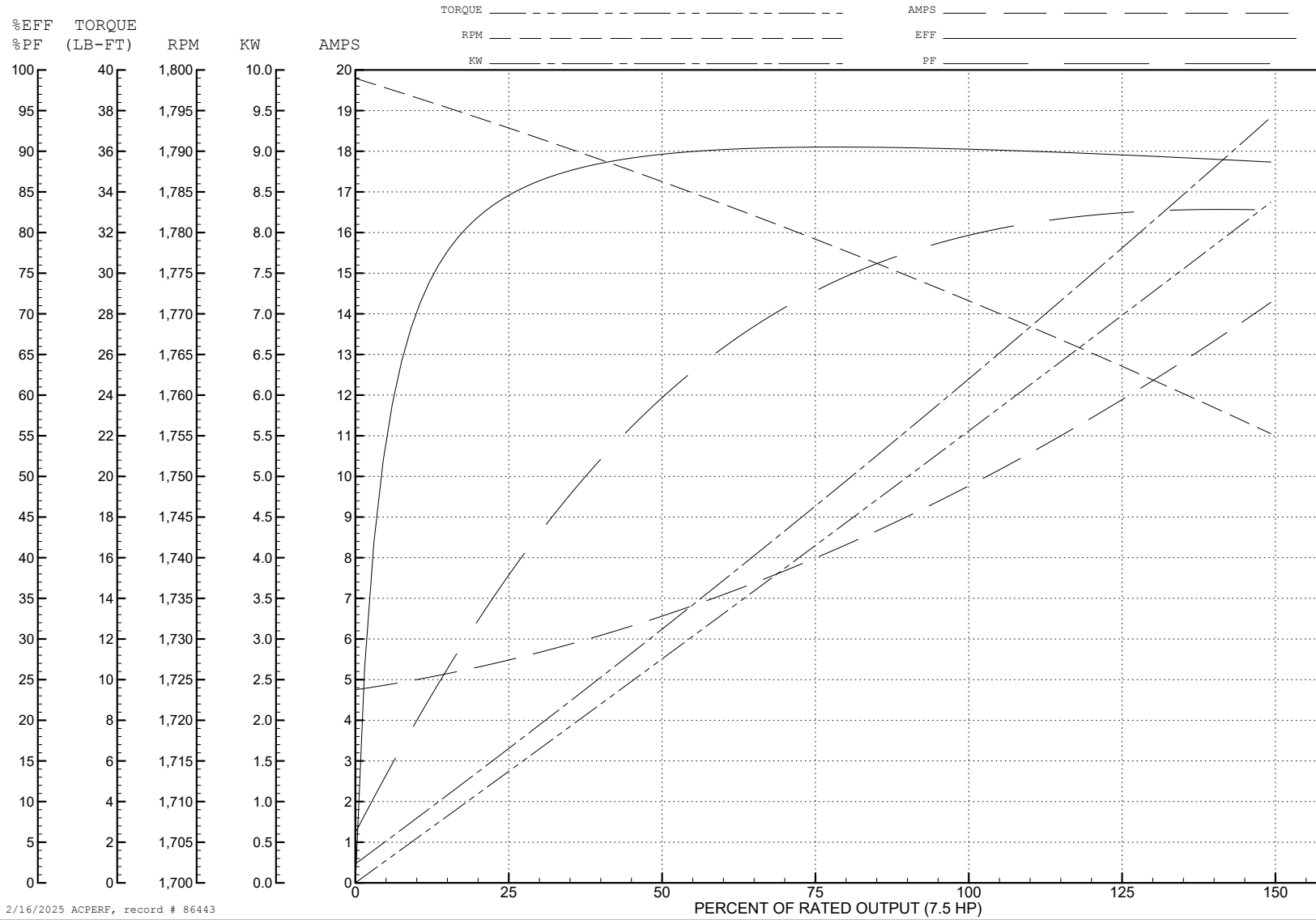
ABB Motors and Mechanical Inc.

WINDING # 37WGL863

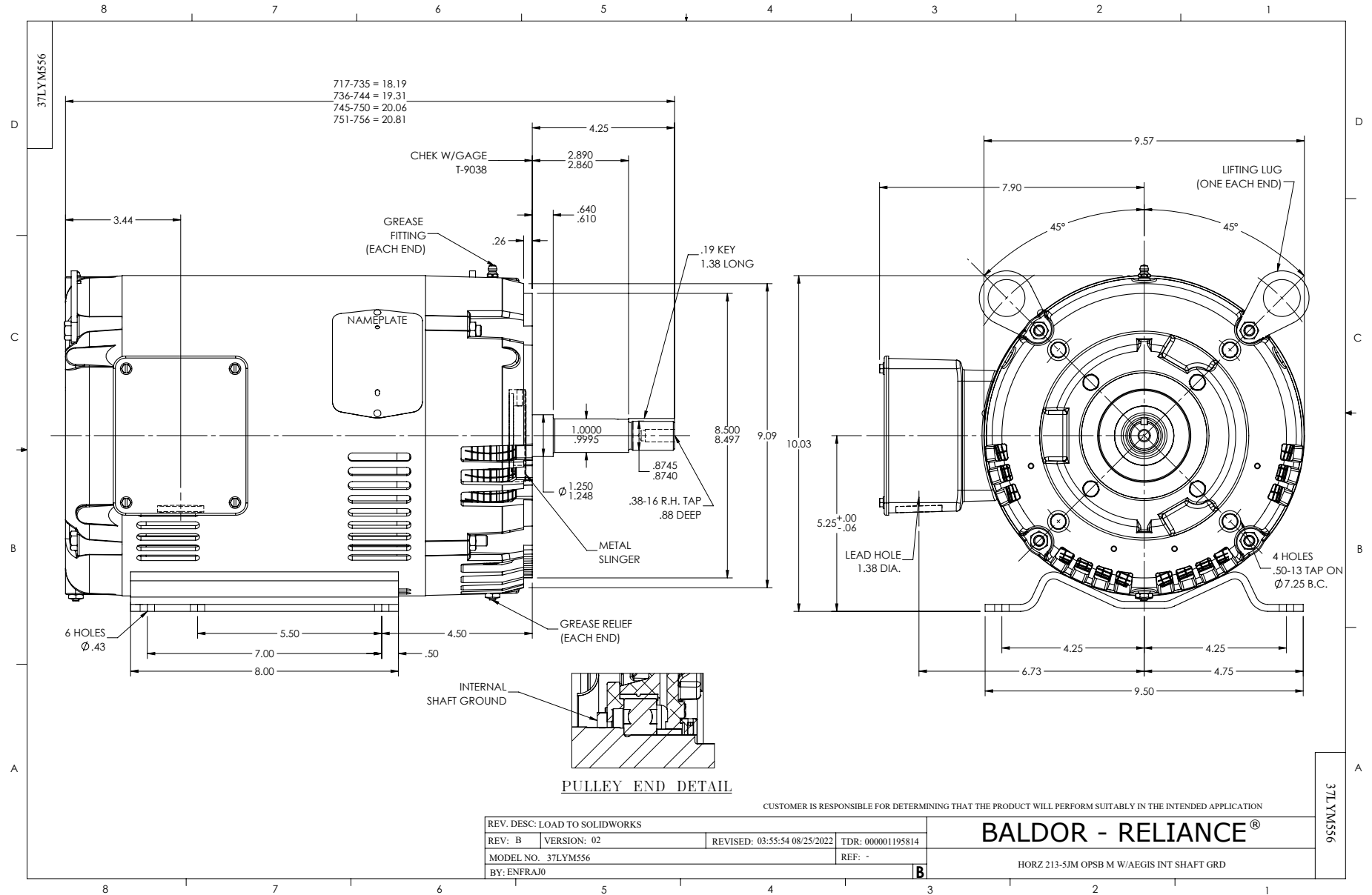
7.5 HP 3 PH 60 HZ 1770 RPM 460 V 3734M

Typical performance - not guaranteed values.

TORQUES (LB-FT): PO=74.8 PU=37.1 LR=45.4 LRA=72



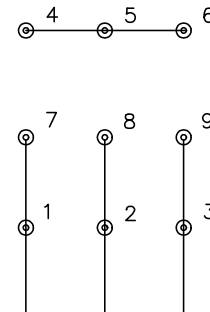
2/16/2025 ACPERF, record # 86443



CD0005



LOW VOLTAGE (2Y)



LINE

HIGH VOLTAGE (1Y)



LINE

NOTES:

1. INTERCHANGE ANY TWO LINE LEADS TO REVERSE ROTATION.
2. OPTIONAL THERMOSTATS ARE PROVIDED WHEN SPECIFIED.
3. ACTUAL NUMBER OF INTERNAL PARALLEL CIRCUITS MAY BE A MULTIPLE OF THOSE SHOWN ABOVE.
4. LEAD COLORS ARE OPTIONAL. LEADS MUST ALWAYS BE NUMBERED AS SHOWN.

CD0005

REV. DESC: REVISE TO SHOW OPTIONAL COLORS			
REV. LTR: E	BY: JLP	REVISED: 01/19/99 10:15	TDR: 0171435
S00000		FILE: AAA00005140	MDL: -
		MTL: -	

**BALDOR ELECTRIC Co.**

3PH, DV, 9 LEADS