



---

# Customer information packet

## EM3305T-G

3HP, 1165RPM, 3PH, 60HZ, 213T, 3734M, OPSB, F1

Class - None

Division - Not Applicable

## Specifications

Enclosure	OPSB
Frame	213T
Frame Material	Steel
Frequency	60.00 Hz
Haz Area Class and Group	None
Haz Area Division	Not Applicable
Motor Letter Type	Three Phase
Output @ Frequency	3.000 HP @ 60 HZ
Phase	3
Synchronous Speed @ Frequency	1200 RPM @ 60 HZ
Voltage @ Frequency	460.0 V @ 60 HZ 230.0 V @ 60 HZ
Agency Approvals	CSA CSA EEV UR
Ambient Temperature	40 °C
Auxillary Box	No Auxillary Box
Auxillary Box Lead Termination	None
Base Indicator	Rigid
Bearing Grease Type	Polyrex EM (-20F +300F)
Blower	None
Current @ Voltage	9.000 A @ 230.0 V 9.400 A @ 208.0 V 4.500 A @ 460.0 V
Design Code	B
Drip Cover	No Drip Cover
Duty Rating	CONT
Efficiency @ 100% Load	88.5 %
Electrically Isolated Bearing	Not Electrically Isolated
Feedback Device	NO FEEDBACK
Front Face Code	Standard
Front Shaft Indicator	None

## Part detail

Revision	Q
Type	AC
Mech. spec.	37J839
Base	
Status	PRD/A
Elec. spec.	37WGR333
Layout	37LYJ839
Eff. date	05-02-2024
CD Diagram	CD0005
Poles	06
Leads	9#14
Proprietary	False
Created date	10-16-2012

Heater Indicator	No Heater
High Voltage Full Load Amps	4.5 a
Insulation Class	H
Inverter Code	Inverter Ready
KVA Code	K
Lifting Lugs	Standard Lifting Lugs
Locked Bearing Indicator	Locked Bearing
Motor Lead Exit	Ko Box
Motor Lead Quantity/Wire Size	9 @ 14 AWG
Motor Lead Termination	Flying Leads
Motor Standards	NEMA
Motor Type	3734M
Mounting Arrangement	F1
Number of Poles	6
Overall Length	16.32 IN
Power Factor	70
Product Family	General Purpose
Pulley End Bearing Type	Ball
Pulley Face Code	Standard
Pulley Shaft Indicator	Standard
Rodent Screen	None
Service Factor	1.15
Shaft Diameter	1.375 IN
Shaft Extension Location	Pulley End
Shaft Ground Indicator	Shaft Grounding
Shaft Rotation	Reversible
Shaft Slinger Indicator	No Slinger
Speed	1165 rpm
Speed Code	Single Speed
Starting Method	Direct on line
Thermal Device - Bearing	None
Thermal Device - Winding	None
Vibration Sensor Indicator	No Vibration Sensor
Winding Thermal 1	None

**Winding Thermal 2**

**None**

---

**Nameplate**

<b>NP1259L</b>									
<b>CAT.NO.</b>	EM3305T-G								
<b>SPEC.</b>	37J839R333G1								
<b>HP</b>	3								
<b>VOLTS</b>	230/460								
<b>AMP</b>	9/4.5								
<b>RPM</b>	1165								
<b>FRAME</b>	213T	<b>HZ</b>	60	<b>PH</b>	3				
<b>SER.F.</b>	1.15	<b>CODE</b>	K	<b>DES</b>	B	<b>CL</b>	H		
<b>NEMA-NOM-EFF</b>	88.5	<b>PF</b>	70						
<b>RATING</b>	40C AMB-CONT								
<b>CC</b>	010A								
<b>DE</b>	6307	<b>ODE</b>	6206						
<b>ENCL</b>	OPSB	<b>SN</b>							

**AC Induction Motor Performance Data**

Record # 53382

Typical performance - not guaranteed values

<b>Winding: 37WGR333-R006</b>		<b>Type: 3734M</b>		<b>Enclosure: OPSB</b>	
<b>Nameplate Data</b>			<b>460 V, 60 Hz: High Voltage Connection</b>		
<b>Rated Output (HP)</b>	3	<b>Full Load Torque</b>	13.59 LB-FT		
<b>Volts</b>	230/460	<b>Start Configuration</b>	direct on line		
<b>Full Load Amps</b>	9/4.5	<b>Breakdown Torque</b>	46.48 LB-FT		
<b>R.P.M.</b>	1165	<b>Pull-up Torque</b>	21.64 LB-FT		
<b>Hz</b>	60 <b>Phase</b>	3	<b>Locked-rotor Torque</b>	35.84 LB-FT	
<b>NEMA Design Code</b>	<b>B KVA Code</b>	K	<b>Starting Current</b>	31.11 A	
<b>Service Factor (S.F.)</b>		1.15	<b>No-load Current</b>	2.38 A	
<b>NEMA Nom. Eff.</b>	88.5 <b>Power Factor</b>	71	<b>Line-line Res. @ 25°C</b>	3.48 Ω	
<b>Rating - Duty</b>	40C AMB-CONT		<b>Temp. Rise @ Rated Load</b>	20°C	
<b>S.F. Amps</b>			<b>Temp. Rise @ S.F. Load</b>	24°C	
			<b>Locked-rotor Power Factor</b>	25.2	
			<b>Rotor inertia</b>	0.846 LB-FT <sup>2</sup>	

**Load Characteristics 460 V, 60 Hz, 3 HP**

<b>% of Rated Load</b>	<b>25</b>	<b>50</b>	<b>75</b>	<b>100</b>	<b>125</b>	<b>150</b>	<b>S.F.</b>
<b>Power Factor</b>	34	53	64	71	74	76	73
<b>Efficiency</b>	82.9	88.4	89.4	88.9	88	86.1	88.4
<b>Speed</b>	1192	1185	1177	1168	1158	1147	1161
<b>Line amperes</b>	2.57	3.06	3.73	4.49	5.41	6.45	5.04

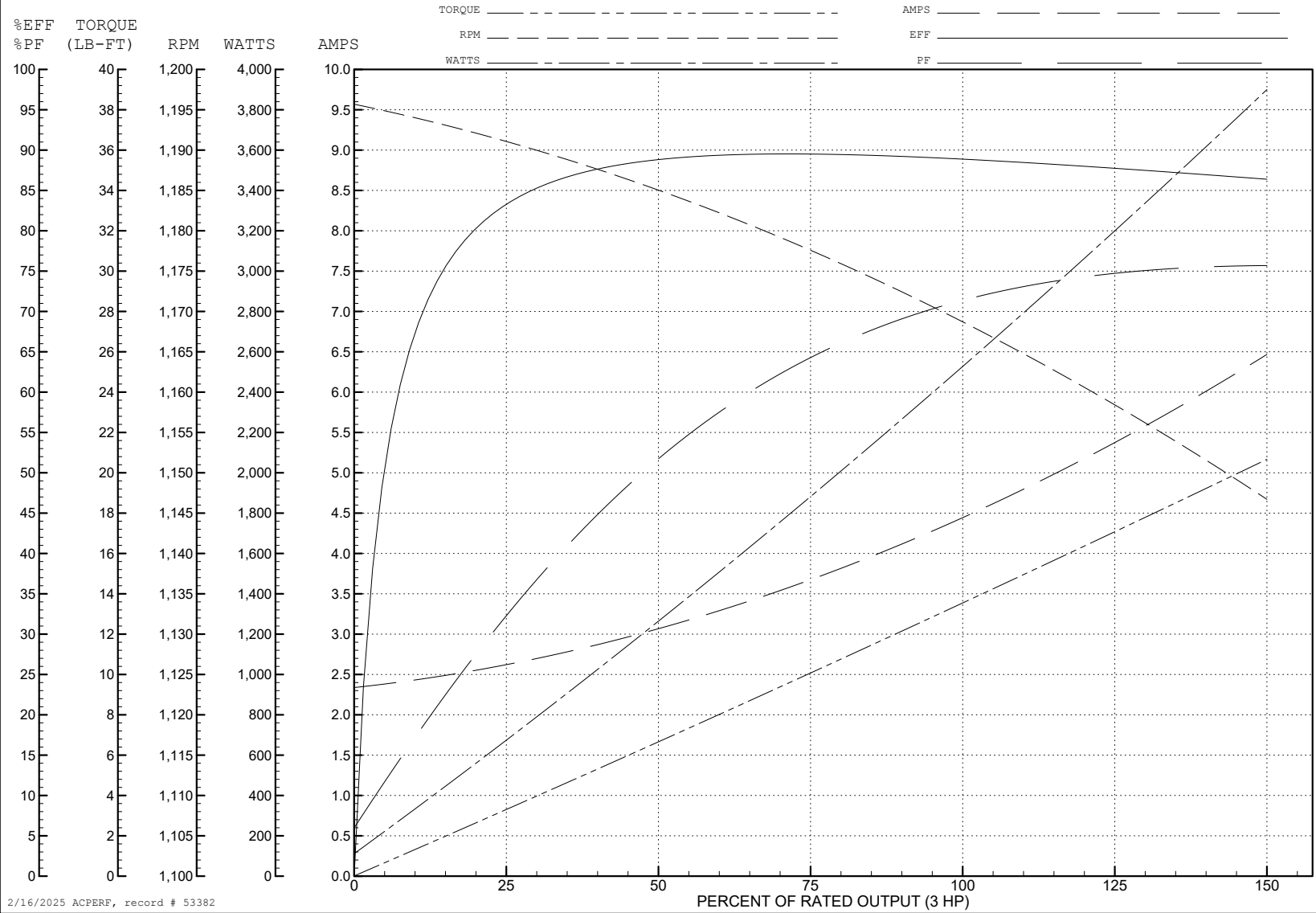
ABB Motors and Mechanical Inc.

WINDING # 37WGR333

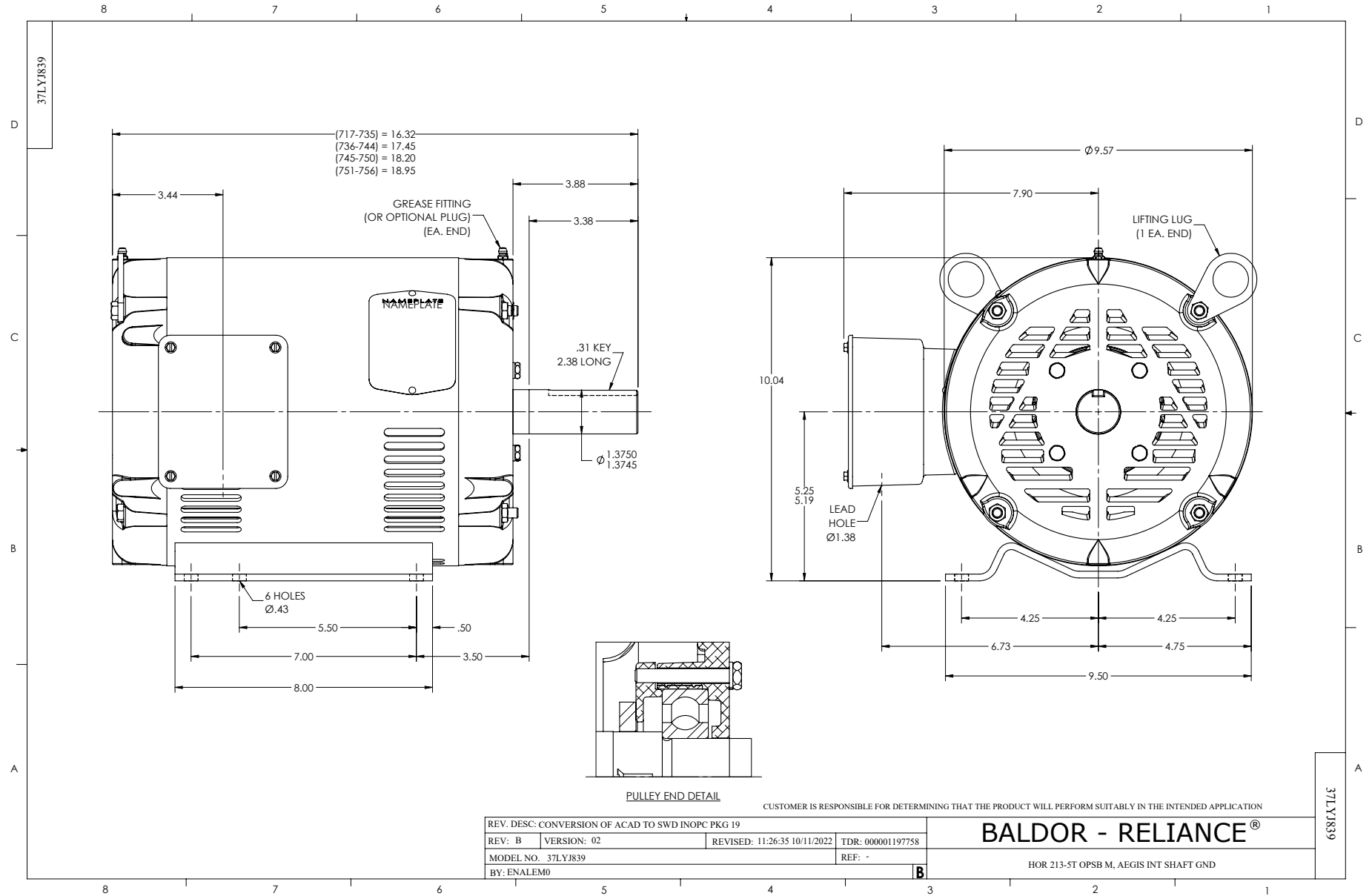
3 HP 3 PH 60 HZ 1165 RPM 460 V 3734M

Typical performance - not guaranteed values.

TORQUES (LB-FT): PO=46.48 PU=21.64 LR=35.84 LRA=31.11



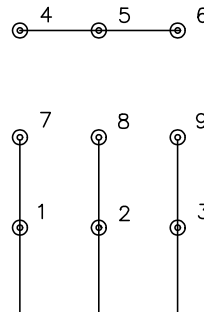
2/16/2025 ACPERF, record # 53382



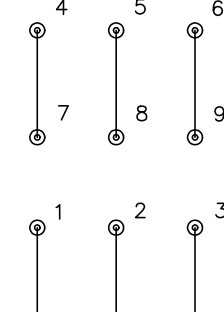
CD0005



LOW VOLTAGE  
(2Y)



HIGH VOLTAGE  
(1Y)



NOTES:

1. INTERCHANGE ANY TWO LINE LEADS TO REVERSE ROTATION.
2. OPTIONAL THERMOSTATS ARE PROVIDED WHEN SPECIFIED.
3. ACTUAL NUMBER OF INTERNAL PARALLEL CIRCUITS MAY BE A MULTIPLE OF THOSE SHOWN ABOVE.
4. LEAD COLORS ARE OPTIONAL. LEADS MUST ALWAYS BE NUMBERED AS SHOWN.

CD0005

REV. DESC: REVISE TO SHOW OPTIONAL COLORS			
REV. LTR: E	BY: JLP	REVISED: 01/19/99 10:15	TDR: 0171435
S00000		FILE: AAA00005140	MDL: -
		MTL: -	

**BALDOR ELECTRIC Co.**

3PH, DV, 9 LEADS