

# Hub City™ Worm Gear Drives

## Single Reduction

### PowerCubeX® Worm Speed Reducer Catalog Ratings

#### Series W150

SERIES	INPUT RPM	RATIO	OUTPUT RPM	CONVENTIONAL OIL					PAO SYNTHETIC OIL			PAG SYNTHETIC OIL		
				MECH. INPUT HP	EFF. %	MECH. OUTPUT TORQUE	THERMAL INPUT HP	THERMAL OUTPUT TORQUE	INPUT HP	EFF. %	OUTPUT TORQUE	INPUT HP	EFF. %	OUTPUT TORQUE
W150	2500	5	500	2.25	85.6	243	2.05	221	2.25	90.7	258	2.25	93.5	266
		7.5	333	1.66	83.6	263	1.52	240	1.66	88.7	279	1.66	91.4	288
		10	250	1.37	81.5	281	1.14	234	1.37	86.4	298	1.37	89.1	307
		15	167	1.03	77.5	301	0.87	254	1.03	82.2	319	1.03	84.7	329
		20	125	0.84	74.4	313	0.76	283	0.84	78.8	332	0.84	81.3	343
		25	100	0.71	71.4	319	0.60	272	0.71	75.7	338	0.71	78.1	348
		30	83.3	0.61	67.4	309	0.55	278	0.61	71.5	328	0.61	73.7	338
		40	62.5	0.49	62.7	312	0.46	294	0.49	66.5	331	0.49	68.6	341
		50	50.0	0.41	58.7	306	0.37	279	0.41	62.2	325	0.41	64.1	335
		60	41.7	0.35	55.1	293	THERMAL EQUALS MECHANICAL		0.35	58.4	311	0.35	60.2	320
	80	31.3	0.250	48.8	244	0.250			51.8	259	0.250	53.4	267	
	100	25.0	0.170	44.2	194	0.170			46.8	206	0.170	48.3	212	
	1750	5	350	1.94	84.6	296	2.00	305	1.94	89.6	314	1.94	92.4	323
		7.5	233	1.50	82.3	330	1.45	323	1.50	87.3	350	1.50	90.0	361
		10	175	1.22	79.9	351	1.10	317	1.22	84.7	372	1.22	87.3	384
		15	117	0.92	75.4	375	0.82	335	0.92	79.9	398	0.92	82.4	410
		20	87.5	0.75	71.8	387	0.72	370	0.75	76.2	411	0.75	78.5	423
		25	70.0	0.63	68.6	392	0.57	356	0.63	72.8	416	0.63	75.0	428
		30	58.3	0.55	64.3	385	0.50	348	0.55	68.1	408	0.55	70.3	420
		40	43.8	0.45	59.3	385	THERMAL EQUALS MECHANICAL		0.45	62.8	408	0.45	64.8	421
		50	35.0	0.38	55.0	376			0.38	58.3	399	0.38	60.1	411
		60	29.2	0.33	51.3	359			0.33	54.4	381	0.33	56.1	392
	1170	80	21.9	0.230	44.9	299	THERMAL EQUALS MECHANICAL		0.230	47.7	316	0.230	49.1	326
		100	17.5	0.160	40.3	236			0.160	42.7	251	0.160	44.1	258
		5	234	1.58	83.3	355			1.58	88.3	376	1.58	91.0	388
		7.5	156	1.21	80.7	393	THERMAL EQUALS MECHANICAL		1.21	85.5	417	1.21	88.2	430
		10	117	1.00	77.9	417			1.00	82.6	442	1.00	85.2	456
		15	78.0	0.76	72.8	445			0.76	77.2	471	0.76	79.6	486
		20	58.5	0.61	68.9	456	0.61	73.0	484	0.61	75.3	499		
		25	46.8	0.52	65.4	460	0.52	69.3	488	0.52	71.5	503		
		30	39.0	0.46	60.7	456	0.46	64.3	483	0.46	66.3	498		
		40	29.3	0.38	55.4	453	0.38	58.7	481	0.38	60.5	496		
	50	23.4	0.33	51.0	441	0.33	54.0	468	0.33	55.7	482			
	60	19.5	0.28	47.2	420	0.28	50.0	445	0.28	51.6	459			
	80	14.6	0.200	40.8	349	0.200	43.3	370	0.200	44.6	381			
	100	11.7	0.140	36.3	275	0.140	38.5	292	0.140	39.7	301			
	100	5	20.0	0.210	75.5	497	THERMAL EQUALS MECHANICAL		0.210	80.1	527	0.210	82.5	543
		7.5	13.3	0.160	71.3	543			0.160	75.6	576	0.160	77.9	593
		10	10.0	0.140	66.9	574			0.140	70.9	608	0.140	73.1	627
		15	6.7	0.110	59.4	609	0.110	63.0	646	0.110	64.9	666		
		20	5.0	0.090	54.4	617	0.090	57.6	654	0.090	59.4	674		
		25	4.0	0.080	50.1	617	0.080	53.1	655	0.080	54.8	675		
		30	3.3	0.070	44.3	623	0.070	46.9	660	0.070	48.4	680		
		40	2.5	0.060	38.8	613	0.060	41.2	649	0.060	42.5	669		
		50	2.0	0.050	34.6	592	0.050	36.7	628	0.050	37.8	647		
60		1.7	0.050	31.2	560	0.050	33.1	594	0.050	34.1	613			
80	1.3	0.040	25.8	464	0.040	27.3	492	0.040	28.2	508				
100	1.0	0.030	22.3	365	0.030	23.6	387	0.030	24.4	398				

ADDITIONAL RATINGS FOR OTHER INPUT SPEEDS ARE AVAILABLE AT [WWW.REGALBELOIT.COM](http://WWW.REGALBELOIT.COM)  
 ‡OHL AND THRUST VALUES SHOWN ARE INDEPENDENT FUNCTIONS AND CANNOT BE APPLIED SIMULTANEOUSLY.  
 REFER APPLICATIONS WITH COMBINED OHL AND THRUST TO HUB CITY CUSTOMER SERVICE DEPARTMENT.

#### OVERHUNG LOAD AND THRUST LOAD INFORMATION

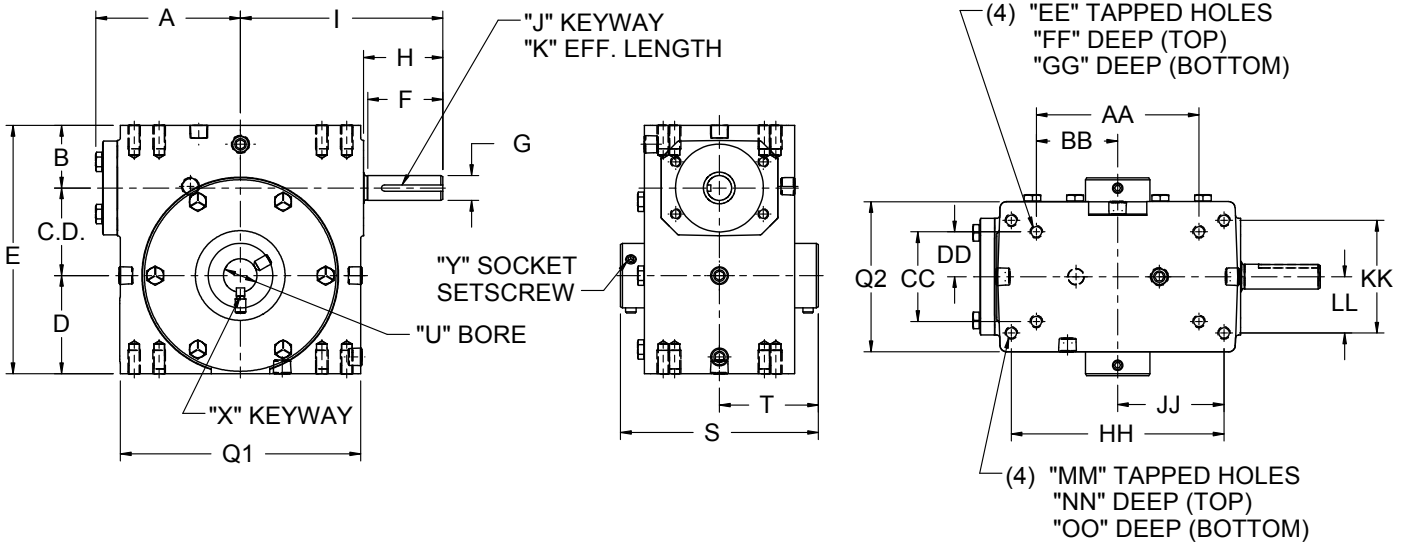
OVERHUNG LOAD - LOW SPEED SHAFT — MODELS 151 AND 154 860 LBS. AT CENTER POINT OF SHAFT EXTENSION. MODELS 152 AND 155 NOT APPLICABLE. THRUST‡ UP OR DOWN 790 LBS.

OUTPUT TORQUE VALUES SHOWN ARE INCH-POUNDS (IN-LB).

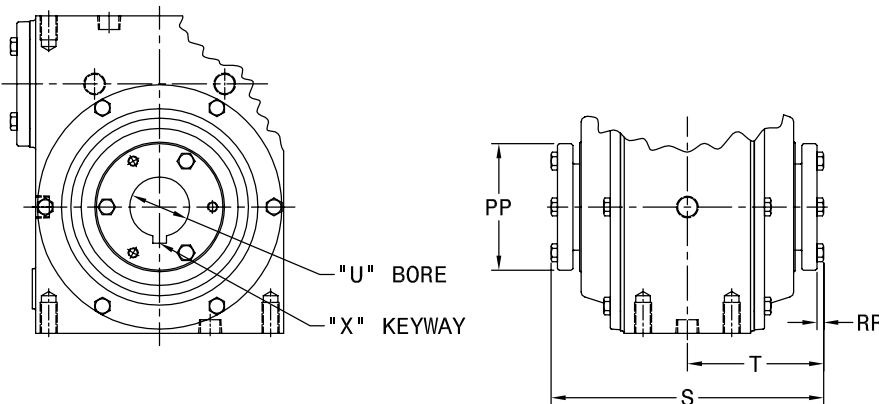
# Hub City™ Worm Gear Drives

## Single Reduction Models

132, 152, 182, 212, 242, 262, 302, 322, 382, 422, 452, 522, GW602, GW702, GW802, GW1002



### QD™ Bushing Detail for Models 452, 522



THESE UNITS CAN BE FURNISHED WITH SOLID OUTPUT SHAFT ON SPECIAL ORDERS.

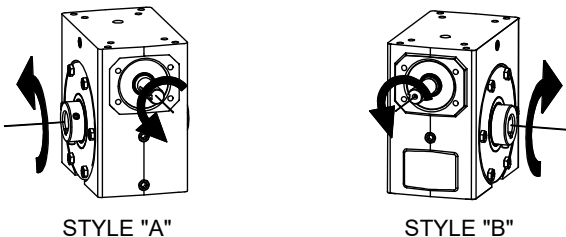
SHAFT MOUNTED UNITS REQUIRE TORQUE ARMS. TORQUE ARM KITS ARE AVAILABLE. SEE PAGE B-105.

ALL GW MODELS ARE FAN COOLED REFER TO FAN DETAILS ON NEXT PAGE.

FOR LUBRICATION AND INSTALLATION INSTRUCTIONS - REFER TO SECTION M

DIMENSIONS SHOWN ARE FOR REFERENCE ONLY. DOWNLOAD AVAILABLE CAD MODELS AT: WWW.HUBCITYINC.COM

### Standard Styles Available



CONSULT FACTORY FOR VERTICAL SHAFT LUBRICATION RECOMMENDATIONS.

INPUT SHAFT CAN BE ROTATED IN EITHER DIRECTION.

NOTE: STYLE "A" SUPPLIED AS STANDARD UNLESS SPECIFIED OTHERWISE.

NOTE: STYLE B DOES NOT APPLY TO MODELS 452 AND LARGER. HOUSINGS HAVE A COVER ON BOTH SIDES OF OUTPUT.

# Hub City™ Worm Gear Drives

## Single Reduction Models

132, 152, 182, 212, 242, 262, 302, 322, 382, 422, 452, 522, GW602, GW702, GW802, GW1002

MODEL	C.D.	A	B	D	E	Q1	Q2	F	G	H	I	J	K
132	1.334	2.61	1.186	1.562	4.082	4.12	3.12	1.67	.500/.4985	1.76	3.82	1/8 X 1/16 P&W	1.44
152	1.541	3.14	1.928	1.906	5.375	4.88	3.44	1.76	.625/.6235	1.76	4.35	3/16 X 3/32 P&W	1.50
182	1.751	3.23	1.374	1.875	5.000	5.16	3.44	N/A	.625/.6235	1.76	4.44	3/16 X 3/32 P&W	1.50
212	2.064	3.61	1.500	2.437	6.000	5.88	4.12	N/A	.625/.6235	1.76	4.82	3/16 X 3/32 P&W	1.50
242	2.376	3.77	2.061	2.500	6.937	6.12	4.06	2.38	.750/.7485	2.38	5.51	3/16 X 3/32 P&W	1.75
262	2.626	4.33	1.874	2.938	7.438	7.20	4.50	2.36	.750/.7485	2.38	6.07	3/16 X 3/32 P&W	1.75
302	3.001	4.84	2.624	3.250	8.875	8.12	5.25	2.38	.875/.8735	2.38	6.57	3/16 X 3/32 P&W	1.75
322	3.251	5.28	2.124	3.250	8.625	8.62	5.20	N/A	.875/.8735	2.38	6.75	3/16 X 3/32 P&W	1.75
382	3.751	4.90	2.374	3.937	10.062	9.60	5.62	2.20	1.000/.999	2.48	7.38	1/4 X 1/8 P&W	1.91
422	4.251	6.10	2.686	4.438	11.375	10.25	6.13	3.47	1.250/1.2485	3.47	9.60	1/4 X 1/8 P&W	2.87
452	4.501	5.23	2.499	4.625	11.625	9.25	4.63	2.98	1.125/1.124	3.21	8.44	1/4 X 1/8	2.50
522	5.168	5.98	2.624	5.375	13.167	10.75	5.06	N/A	1.250/1.249	3.27	9.25	1/4 X 1/8	2.63
GW602	6.000	N/A	4.000	6.500	16.500	14.25	8.13	N/A	1.500	3.41	11.78	3/8 X 3/16	3.00
GW702	7.000	N/A	4.320	7.590	18.910	14.88	7.63	N/A	1.625	2.98	11.50	3/8 X 3/16 P&W	2.87
GW802	8.000	N/A	4.100	8.860	20.960	17.00	8.63	N/A	1.875	2.84	12.50	1/2 X 1/4 P&W	2.81
GW1002	10.000	N/A	5.110	10.360	25.470	20.88	9.53	N/A	2.250	3.76	15.50	1/2 X 1/4 P&W	3.69

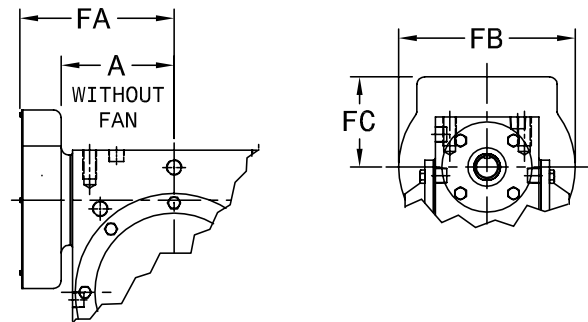
MODEL	AA	BB	CC	DD	EE	FF	GG	HH	JJ	KK	LL	MM	NN	OO	Wt. Lbs.
132	2.250	1.125	1.625	0.813	1/4 UNC	0.50	0.50	3.250	1.625	2.000	1.000	5/16 UNC	0.50	0.50	15
152	4.188	2.094	2.750	1.375	5/16 UNC	0.63	0.63	N/A	N/A	N/A	N/A	N/A	N/A	N/A	15
182	3.125	1.563	1.625	0.813	1/4 UNC	0.50	0.50	4.188	2.094	2.750	1.375	5/16 UNC	0.63	0.63	15
212	4.000	2.000	2.000	1.000	3/8 UNC	0.50	0.70	5.000	2.500	2.875	1.438	3/8 UNC	0.70	0.70	24
242	5.000	2.500	2.875	1.438	3/8 UNC	0.69	0.69	N/A	N/A	N/A	N/A	N/A	N/A	N/A	37
262	4.875	2.438	2.688	1.344	3/8 UNC	0.70	0.70	6.375	3.188	3.375	1.688	3/8 UNC	0.70	0.70	37
302	7.000	3.500	4.000	2.000	7/16 UNC	0.88	0.88	N/A	N/A	N/A	N/A	N/A	N/A	N/A	57
322	6.250	3.125	2.750	1.375	1/2 UNC	0.75	0.75	7.500	3.750	4.000	2.000	7/16 UNC	0.88	0.88	66
382	6.875	3.438	3.000	1.500	1/2 UNC	0.94	1.00	8.500	4.250	4.750	2.375	1/2 UNC	1.00	1.00	85
422	8.500	4.250	5.000	2.500	5/8 UNC	1.00	1.00	N/A	N/A	N/A	N/A	N/A	N/A	N/A	107
452	8.125	4.063	3.250	1.625	5/8 UNC	0.88	1.13	N/A	N/A	N/A	N/A	N/A	N/A	N/A	107
522	9.500	4.750	3.750	1.875	5/8 UNC	1.00	1.25	N/A	N/A	N/A	N/A	N/A	N/A	N/A	135
GW602	12.750	6.375	6.380	3.190	5/8 UNC	1.00	1.00	N/A	N/A	N/A	N/A	N/A	N/A	N/A	294
GW702	12.500	6.250	5.500	2.750	1 UNC	1.56	1.56	N/A	N/A	N/A	N/A	N/A	N/A	N/A	399
GW802	14.250	7.125	6.500	3.250	1 UNC	1.66	1.66	N/A	N/A	N/A	N/A	N/A	N/A	N/A	582
GW1002	17.750	8.875	6.875	3.438	1-1/4 UNC	2.04	2.04	N/A	N/A	N/A	N/A	N/A	N/A	N/A	905

### Stock Output Bores

MINIMUM AND MAXIMUM BORE DIMENSIONS SHOWN. FOR ADDITIONAL STOCK OUTPUT BORE SIZES AND STOCK QD™ BUSHING KITS AVAILABLE SEE PAGE B-96.

MODEL	U (MIN.)	U (MAX.)	S	T
132	N/A	5/8	4.50	2.25
152	N/A	5/8	5.42	2.71
182	15/16	1	4.81	2.41
212	15/16	1-1/2	5.56	2.78
242	1	1-1/2	6.00	3.00
262	1	1-1/2	5.93	2.97
302	1-3/16	2-3/16	7.50	3.75
322	1-7/16	2-3/16	7.56	3.78
382	1-7/16	2-3/16	7.56	3.78
422	1-7/16	2-3/16	8.50	4.25
452	*QD BUSHING KIT REQUIRED*		10.00	5.00
522			11.13	5.56
GW602	2	3-7/16	11.50	5.75
GW702	2-7/16	3-15/16	13.50	6.75
GW802	3-7/16	4-7/16	14.50	7.25
GW1002	3-7/16	5-7/16	18.50	9.25

### Fan Detail For Models GW602 Through GW1002



MODEL	A	FA	FB	FC
GW602	N/A	11.13	9.50	4.00
GW702	N/A	11.37	9.65	4.83
GW802	N/A	12.52	9.65	4.83
GW1002	N/A	14.69	11.28	5.62

ALL GW MODELS ARE FAN COOLED.



Select hollow output bore models in this product line are now available with the HubLoc® keyless bushing system. Refer to pages i and ii at front of this catalog for features, available sizes, and ordering information.