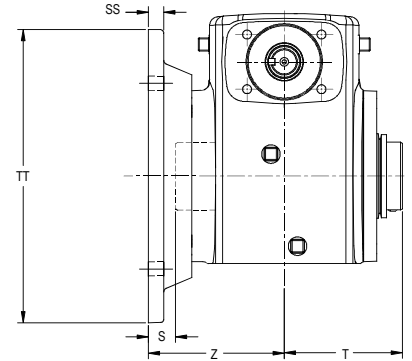
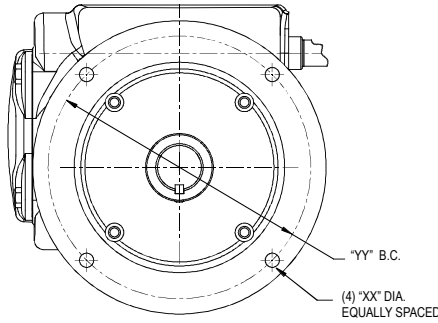
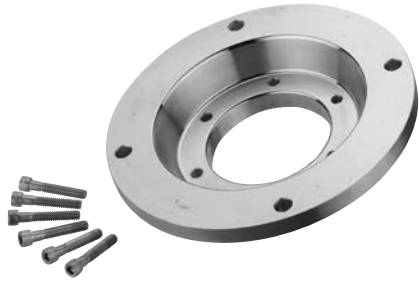


SS HERA® GEAR DRIVE ACCESSORIES

SIDE MOUNTING



Note: Flange Kit can be installed on either side.

F - FLANGE KITS

Series	F-Flange Kit No.	Shipping Wt. Lbs.	Size Ref.	S	T	Z	SS	TT	XX	YY
SSHERA35	0259-00225	5.5	18	0.19	3.00	3.19	0.38	6.50	0.34	5.875
	0259-00226	6.5	21	0.56	3.00	3.56	0.44	7.88	0.41	7.000
	0259-00227	7.3	24	0.50	3.00	3.50	0.44	8.38	0.41	7.500
SSHERA45	0259-00228	7.3	24	0.50	3.38	3.88	0.44	8.38	0.41	7.500
	0259-00229	8.6	26	0.06	3.38	3.44	0.50	8.88	0.41	8.000
	*0259-00230	8.4	30	-0.10	3.38	3.28	0.50	9.88	0.41	9.000

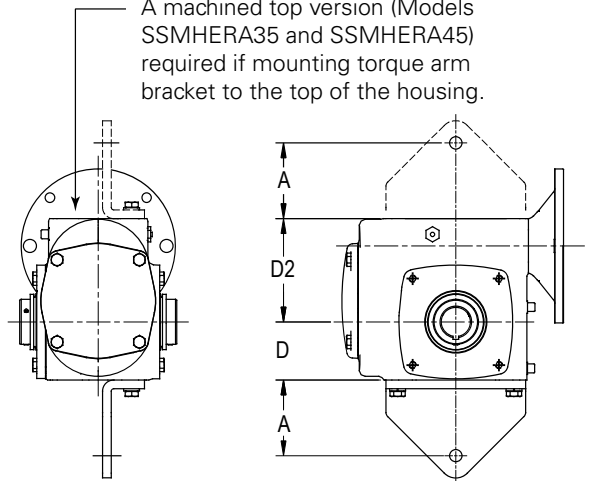
*Factory modifications required if used with quill style input models.

TORQUE ARM BRACKETS

SERIES	TORQUE ARM KIT NO.	A	D	D2	Shipping WT. LBS.
SSHERA35	0279-00820	3.25	2.062	3.688	4.0
SSHERA45	0279-00820	3.25	2.500	4.438	4.0

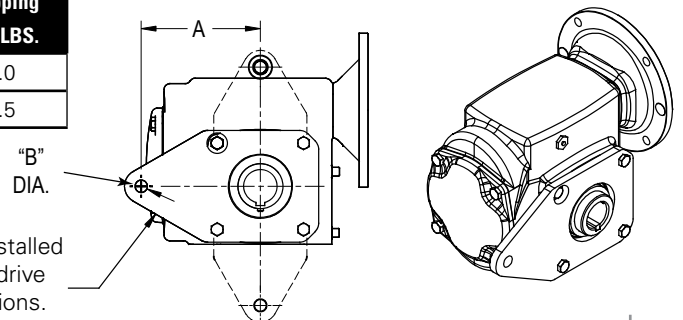


A machined top version (Models SSMHERA35 and SSMHERA45) required if mounting torque arm bracket to the top of the housing.



TORQUE PLATE KITS (SIDE MOUNTED)

SERIES	TORQUE PLATE KIT NO.	A	B	Shipping WT. LBS.
SSHERA35	0259-00311	5.12	0.53	3.0
SSHERA45	0259-00312	5.12	0.53	3.5



Torque plate can be installed on either side of gear drive in (3) possible orientations.