

# Hub City™ Parallel Shaft Drives

## Model 95L – Single Reduction

### Features

- Rugged cast iron housing designed for rigid gear and bearing support.
- Alloy shafting and sleeves for greater strength.
- Ball bearings on high speed shaft. Tapered roller bearings on low speed shaft.
- Choice of five (5) standard gear ratios.
- Heat treated alloy steel gearing for strength and long wear life.
- Heavy-duty industrial seals to keep lubricant in and dirt out.
- Shaft mount design for direct mounting on the drive shaft of equipment to be driven.
- Hub City lubricant recommended. (Refer to Section M)
- Unit may be operated as a speed increaser or speed reducer.



SINGLE REDUCTION UNITS PROVIDE OPPOSITE DIRECTION OUTPUT ROTATION

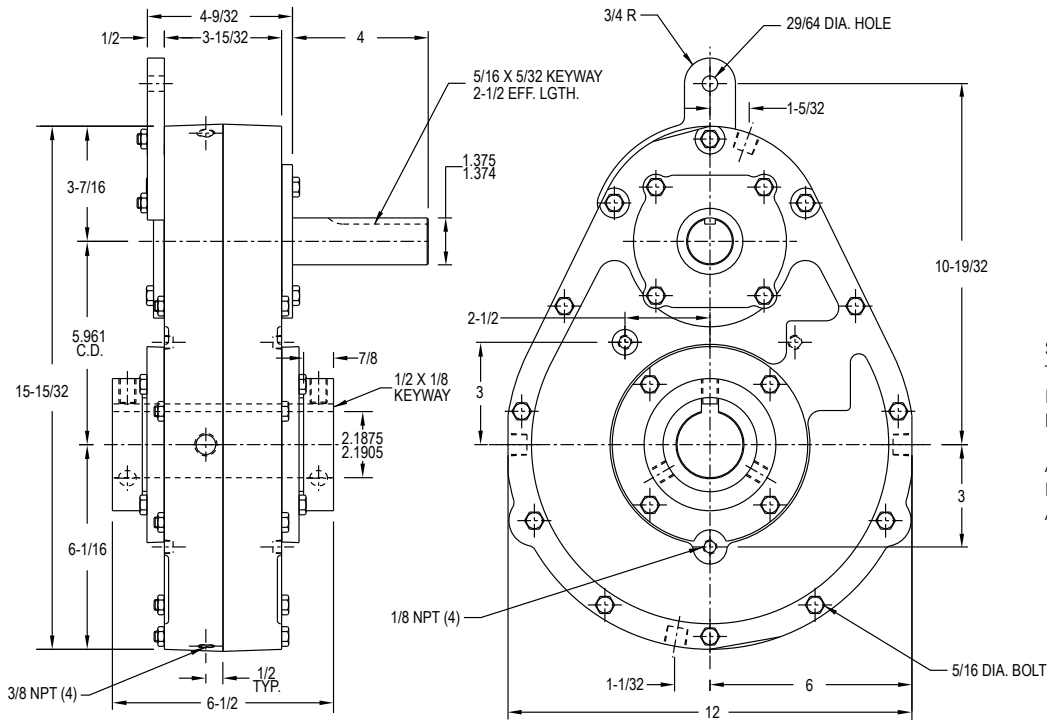
### Rating Tables

INPUT RPM		SPEED REDUCER RATIOS				
		2.19:1	3.10:1	4.19:1	4.86:1	5.83:1
1750	INPUT HORSEPOWER	63.5	51.2	40.9	36.9	31.8
	OUTPUT RPM	799	565	418	360	300
	OUTPUT TORQUE IN. LBS.	4962	5657	6111	6387	6600
1150	INPUT HORSEPOWER	48.4	37.5	29.5	26.3	22.4
	OUTPUT RPM	525	371	274	237	197
	OUTPUT TORQUE IN. LBS.	5749	6306	6712	6923	7071
850	INPUT HORSEPOWER	38.8	29.5	23.0	20.4	17.4
	OUTPUT RPM	388	274	203	175	146
	OUTPUT TORQUE IN. LBS.	6242	6712	7071	7263	7444
690	INPUT HORSEPOWER	33.0	24.9	19.3	17.1	14.4
	OUTPUT RPM	315	223	165	142	118
	OUTPUT TORQUE IN. LBS.	6543	6972	7312	7500	7615
100	INPUT HORSEPOWER	6.85	4.96	3.68	3.20	2.68
	OUTPUT RPM	45.7	32.3	23.8	20.6	17.1
	OUTPUT TORQUE IN. LBS.	9357	9593	9618	9706	9763

INPUT RPM		SPEED INCREASER RATIOS				
		1:2.19	1:3.10	1:4.19	1:4.86	1:5.83
1000	INPUT HORSEPOWER	103.9				
	OUTPUT RPM	2192				
	OUTPUT TORQUE IN. LBS.	2988				
850	INPUT HORSEPOWER	90.1	86.1			
	OUTPUT RPM	1863	2635			
	OUTPUT TORQUE IN. LBS.	3048	2057			
540	INPUT HORSEPOWER	60.2	57.6	64.3	65.9	63.5
	OUTPUT RPM	1183	1674	2263	2634	3150
	OUTPUT TORQUE IN. LBS.	3204	2166	1792	1583	1270
300	INPUT HORSEPOWER	35.3	33.8	37.4	38.8	37.4
	OUTPUT RPM	658	930	1256	1457	1750
	OUTPUT TORQUE IN. LBS.	3384	2291	1898	1678	1347
100	INPUT HORSEPOWER	12.70	12.20	13.70	14.10	13.50
	OUTPUT RPM	219	310	419	486	583
	OUTPUT TORQUE IN. LBS.	3645	2476	2055	1818	1461

# Hub City™ Parallel Shaft Drives

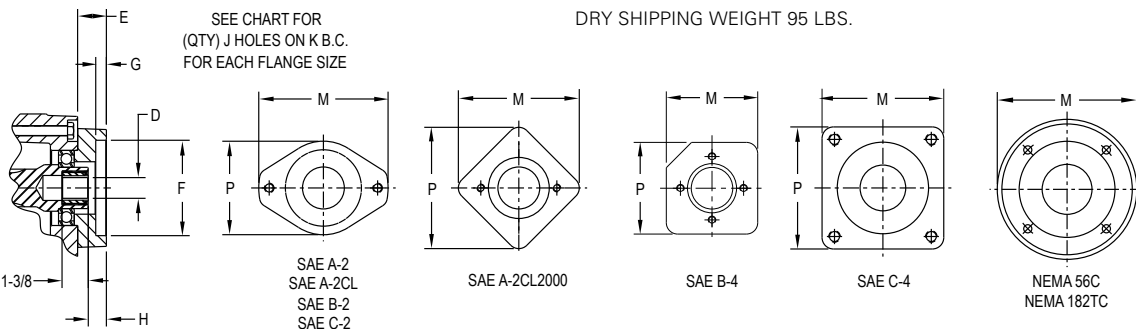
## Model 95L – Single Reduction



SHAFT MOUNTED UNITS REQUIRE TORQUE ARMS. TORQUE ARM KITS ARE AVAILABLE SEE PAGE F-45.

ADDITIONAL RATIOS, OUTPUT BORES AND INPUT BORES ARE AVAILABLE — CONSULT FACTORY.

FOR LUBRICATION AND INSTALLATION INSTRUCTIONS - REFER TO SECTION M  
DRY SHIPPING WEIGHT 95 LBS.



OPTIONAL LOW SPEED BORE SIZES AVAILABLE
1-1/4, 1-5/16, 1-3/8, 1-7/16, 1-1/2, 1-3/4, 1-7/8, 1-15/16, 2", 2-1/8, 2-1/4, 1-3/8-6B Spline, 1-3/8-21T Spline

INPUT BUSHING SIZES			
D			
.625 DIA. - 3/16 X 3/32 KW	1.125 DIA. - 1/4 X 1/8 KW	1" - 6B SPLINE	14T - 12/24 D.P. SPLINE
.875 DIA. - 3/16 X 3/32 KW	1.250 DIA. - 1/4 X 1/8 KW	9T - 16/32 D.P. SPLINE	15T - 16/32 D.P. SPLINE
1.000 DIA. - 1/4 X 1/8 KW	1.250 DIA. - 5/16 X 1/8 KW	13T - 16/32 D.P. SPLINE	21T - 16/32 D.P. SPLINE

FLANGE	E	COUNTERBORE F	G	H	(QTY) J HOLES	B.C. DIA. K	M	P
A-2	1-7/16	3.251 / 3.253	5/16	7/16	(2) 3/8 NC	4-3/16	6-7/8	5-1/4
A-2CL	1-7/16	3.251 / 3.253	3/16	7/16	(2) 1/2 NC	4-3/16	6-7/8	5-1/4
A-2CL2000	1-13/16	3.251 / 3.253	13/32	51/64	(2) 1/2 NC	4-3/16	5-1/2	5-1/2
B-2	1-7/16	4.001 / 4.004	15/32	7/16	(2) 1/2 NC	5-3/4	6-7/8	5-1/4
B-4	1-7/16	4.001 / 4.004	7/16	7/16	(4) 1/2 NC	5	6-1/16	6-1/16
C-2	1-7/8	5.001 / 5.004	17/32	7/8	(2) 5/8 NC	7-1/8	8-1/2	5-15/16
C-4	1-7/8	5.001 / 5.004	17/32	7/8	(4) 1/2 NC	6-3/8	6-1/16	6-1/16
56C	1-5/8	4.502 / 4.504	5/16	5/8	(4) 13/32 DIA.	5-7/8	6-9/16	-
182TC	2-7/16	8.502 / 8.505	5/16	1-7/16	(4) 17/32 DIA.	7-1/4	9-1/8	-

DIMENSIONS SHOWN ARE FOR REFERENCE ONLY.  
DOWNLOAD AVAILABLE CAD MODELS AT: WWW.HUBCITYINC.COM