



**The Timken Company**

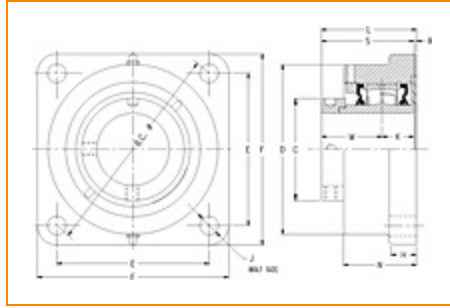
4500 Mt Pleasant St. NW

N. Canton, OH 44720

**Phone:** (234) 262-3000

**E-Mail:** [CustomerCAD@timken.com](mailto:CustomerCAD@timken.com) • **Web site:** [www.timken.com](http://www.timken.com)

Part Number QMF10J200S, Eccentric Four Bolt Square Flange Block



[Specifications](#) | [Dimensions](#) | [Radial and Thrust Factors](#) | [Engineering Seal Speed](#) | [Engineering Bearing Attributes](#) | [Engineering Internal Radial Clearance](#)

Specifications -

<b>Engineering Group</b>	Mounted Bearing
<b>Bearing Number</b>	22210
<b>Shaft Size</b>	2 in
<b>Shaft Size Type</b>	Imperial
<b>Full Timken Part Number</b>	QMF10J200SB QMF10J200SBNP QMF10J200SC QMF10J200SEB QMF10J200SEC QMF10J200SEM QMF10J200SEN QMF10J200SEO QMF10J200SET QMF10J200SM QMF10J200SN



QMF10J200SO  
 QMF10J200ST  
 QMF10J200STNG

**Locking Style**

Eccentric

**Housing Construction**

Four-Bolt Square Flange

**UPC Code**

0883450066228  
 0883450066235  
 0883450066259  
 0883450066266  
 0883450066273  
 0883450066280  
 0883450066297  
 0883450066303  
 0883450161565  
 0883450162241  
 0883450254304  
 0883450254786  
 0883450494441  
 0883450959124

**Dimensions****Dimension BC**

6.19 in  
 157.2 mm

**Dimension C**

2.76 in  
 70.1 mm

**Dimension D**

4.75 in  
 120.7 mm

**Dimension E**

4.38 in  
 111.3 mm

**Dimension F**

5.5000 in  
 139.700 mm

**Dimension H**

0.88 in  
 22.4 mm

<b>Dimension J (Bolt Size)</b>	0.5 in 12 mm
<b>Dimension K</b>	0.98 in 24.9 mm
<b>Dimension L Exp</b>	3.26 in 82.8 mm
<b>Dimension L Fix</b>	3.18 in 80.8 mm
<b>Dimension M</b>	1.89 in 48 mm
<b>Dimension N</b>	2.56 in 65 mm
<b>Dimension R</b>	0.31 in 7.9 mm
<b>Dimension S</b>	2.87 in 72.9 mm

### Radial and Thrust Factors

<b>C0 - Static Load</b>	26600 lbf 118000 N
<b>C - Dynamic Load (Basic)</b>	26300 lbf 117000 N
<b>e - Geometry Factor</b>	0.25
<b>Y1 - Geometry Factor</b>	2.71
<b>Y2 - Geometry Factor</b>	4.04

### Engineering Seal Speed

<b>Oil Lubrication - M/N Seal</b>	2400 rpm
-----------------------------------	----------

<b>Oil Lubrication - T Seal</b>	4200 rpm
---------------------------------	----------

<b>Oil Lubrication - B/C/O Seal</b>	1800 rpm
-------------------------------------	----------

<b>Grease Lubrication - M/N Seal</b>	2400 rpm
--------------------------------------	----------

<b>Grease Lubrication - T Seal</b>	3550 rpm
------------------------------------	----------

<b>Grease Lubrication - B/C/O Seal</b>	1800 rpm
--	----------

## Engineering Bearing Attributes

<b>Float</b>	0.050 in 1.270 mm
--------------	----------------------

<b>Shaft Tolerance</b>	0.0015 in 0.038 mm
------------------------	-----------------------

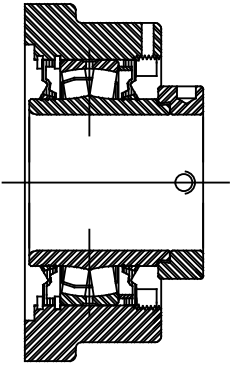
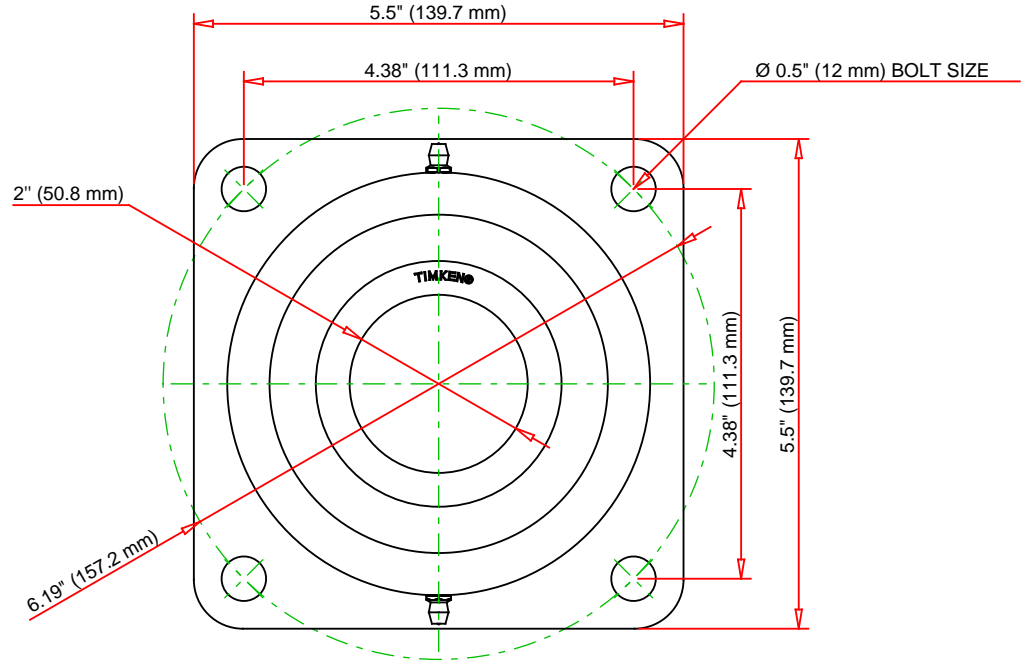
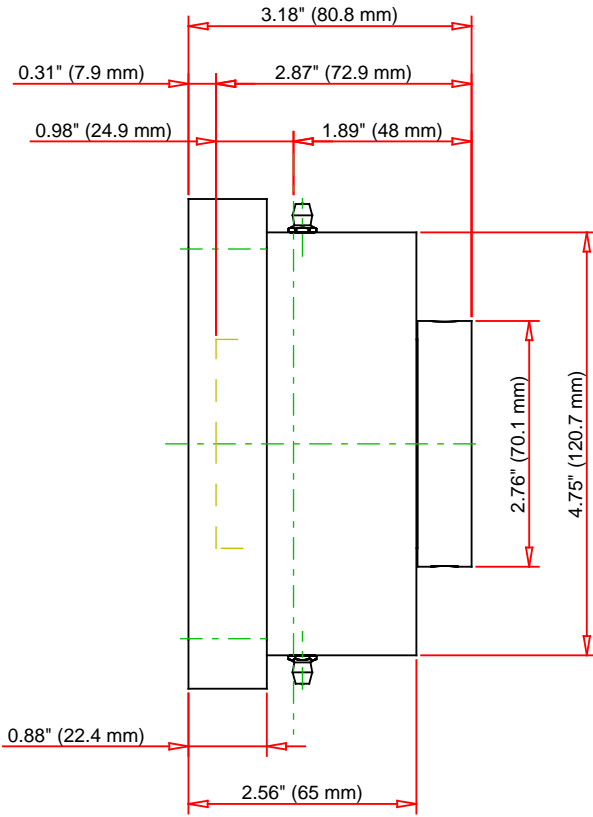
## Engineering Internal Radial Clearance

<b>Eng Internal Radial Clearance - Min</b>	0.0016
--	--------

<b>Eng Internal Radial Clearance - Max</b>	0.0026
--	--------

<b>Pre Install Clearance Min</b>	0.0016 in 0.040 mm
----------------------------------	-----------------------

<b>Pre Install Clearance Max</b>	0.0026 in 0.065 mm
----------------------------------	-----------------------



Note: Section View not to Scale

C - Dynamic Load	26300	lbf	117000	N
C0 - Static Load	26600	lbf	118000	N
Weight	11	lb	5	kg
Max. Speed T-Seals & Grease	3550	rpm		
Rad. Clearance - Max.	0.0026			

**TIMKEN**

THE TIMKEN COMPANY  
NORTH CANTON, OHIO USA

**QMF10J200S**

Eccentric Four Bolt Square Flange  
Block

Every reasonable effort has been made to ensure the accuracy of the information contained in this writing, but no liability is accepted for errors, omissions or for any other reason.

**FOR DISCUSSION ONLY**