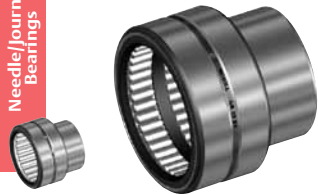
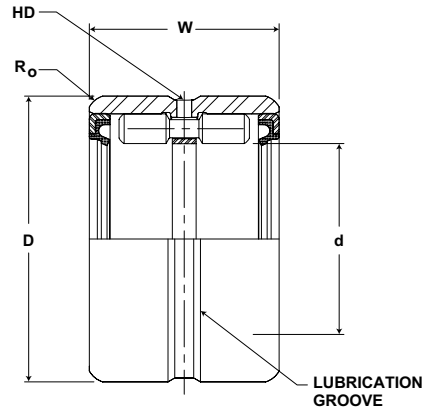


# McGILL® GUIDEROL® Bearings

Needle/Journal Bearings



- Basic Construction Type:** Machined Race with full Complement of Needles
- Rolling Elements:** Center Guided Precision Needles
- Bearing Material:** Bearing Quality Steel
- Seal Type:** Rubber Lip
- Lubrication:** Sealed Bearings: Lithium Soap Grease NLGI #1  
Unsealed Bearings: Rust Preventative



## GR SERIES (continued)

Part No.	d		D		W	Housing Bore Diameter			HD	Ro	Limiting Speed (In Oil)*	Basic Dynamic Rating	Basic Static Rating	Outer & Roller Assembly Weight
	Shaft Diameter		Outside Diameter		Width				Radial Lub. Hole Diameter	Max Hsg Radius to Clear				
	inch mm		inch mm		inch mm	inch mm			inch mm		RPM	lb/N	lb/N	lb kg
	Nom	Tol.	Nom	Tol.	Tol +0/-0.005 (+0/-0.13)	Rotating	Stationary	Tol.	(Ref)	(Ref)				
GR 64 SS, S, RS, SRS, RSS	4.0000	+0/-0.0007	5.0000	+0/-0.0010	2.000	4.9999	5.0011	+0/-0.0015	.19	0.10	950	26,750	98,800	3.56
	101.6	+0/-0.018	127.1	+0/-0.025	50.80	127.047	127.078	+0/-0.038	5	3		118,984	439,462	1.61
GR 64						4.9999	5.0011	+0/-0.0015	.19	0.10	1,500	30,900	119,000	3.56
						127.047	127.078	+0/-0.038	5	3		137,443	529,312	1.61
GR 68 SS, S, RS, SRS, RSS	4.2500	+0/-0.0007	5.2500	+0/-0.0010	2.000	5.2499	5.2511	+0/-0.0015	.19	0.10	900	27,400	104,000	3.74
	108.0	+0/-0.018	133.4	+0/-0.025	50.80	133.400	133.430	+0/-0.038	5	3		121,875	462,592	1.69
GR 68						5.2499	5.2511	+0/-0.0015	.19	0.10	1,410	31,500	126,000	3.74
						133.400	133.430	+0/-0.038	5	3		140,112	560,448	1.69
GR 72	4.5000	+0/-0.0007	6.0000	+0/-0.0010	2.250	5.9999	6.0011	+0/-0.0015	.19	0.10	1,330	43,400	145,000	7.13
	114.3	+0/-0.018	152.5	+0/-0.025	57.15	152.457	152.488	+0/-0.038	5	3		193,043	644,960	3.23
GR 80	5.0000	+0/-0.0007	6.5000	+0/-0.0010	2.250	6.4999	6.5011	+0/-0.0015	.19	0.10	1,200	48,800	161,000	7.78
						165.162	165.193	+0/-0.038	5	3		217,062	716,128	3.53
						6.4999	6.5011	+0/-0.0015	.19	0.10		48,800	161,000	7.78
						165.162	165.193	+0/-0.038	5	3	217,062	716,128	3.53	
GR 88 N	5.5000	+0/-0.0007	7.0000	+0/-0.0010	2.500	4.7495	4.7508	+0/-0.0015	.25	0.10	1,090	60,700	171,000	10.40
					63.50	120.685	120.718	+0/-0.038	6	3		269,994	760,608	4.73
GR 88					3.000	4.7495	4.7508	+0/-0.0015	.25	0.10	1,090	65,000	205,000	11.82
					76.20	120.685	120.718	+0/-0.038	6	3		289,120	911,840	5.36
GR 96 N	6.0000	+0/-0.0010	7.5000	+0/-0.0012	2.500	5.2499	5.2511	+0/-0.0015	.25	0.12	1,000	65,700	223,000	11.08
					63.50	133.400	133.430	+0/-0.038	6	3		292,234	991,904	5.02
GR 96					3.000	5.2499	5.2511	+0/-0.0015	.25	0.12	1,000	71,400	283,000	12.69
					76.20	133.400	133.430	+0/-0.038	6	3		317,587	1,258,784	5.76
GR 104 N	6.5000	+0/-0.0010	8.0000	+0/-0.0012	2.500	5.9999	6.0011	+0/-0.0015	.25	0.12	930	68,900	242,000	11.85
					63.50	152.457	152.488	+0/-0.038	6	3		306,467	1,076,416	5.37
GR 104					3.000	5.9999	6.0011	+0/-0.0015	.25	0.12	930	75,000	308,000	13.55
					76.20	152.457	152.488	+0/-0.038	6	3		333,600	1,369,984	6.15
GR 116	7.2500	+0/-0.0010	9.1250	+0/-0.0012	3.000	9.1248	9.1261	+0/-0.0015	.25	0.12	840	83,900	332,000	19.32
					76.20	231.861	231.894	+0/-0.038	6	3		373,187	1,476,736	8.76
GR 124	7.7500	+0/-0.0010	9.6250	+0/-0.0012	3.000	6.6250	6.6265	+0/-0.0020	.25	0.12	770	86,200	355,000	19.80
					76.20	168.341	168.379	+0/-0.051	6	3		383,418	1,579,040	8.97
GR 132	8.2500	+0/-0.0010	10.1250	+0/-0.0012	3.000	10.1250	10.1265	+0/-0.0020	.25	0.12	730	88,700	378,000	21.63
					76.20	257.276	257.314	+0/-0.051	6	3		394,538	1,681,344	9.81
GR 140	8.7500	+0/-0.0010	10.6250	+0/-0.0014	3.000	10.6250	10.6265	+0/-0.0020	.25	0.16	690	91,500	401,000	22.73
					76.20	269.981	270.019	+0/-0.051	6	4		406,992	1,783,648	10.31
GR 148	9.2500	+0/-0.0010	11.1250	+0/-0.0014	3.000	11.1250	11.1265	+0/-0.0020	.25	0.16	650	93,500	423,000	24.00
					76.20	282.686	282.724	+0/-0.051	6	4		415,888	1,881,504	10.88

For sealed bearings, Outside diameter may be slightly oversize due to seal press fit.

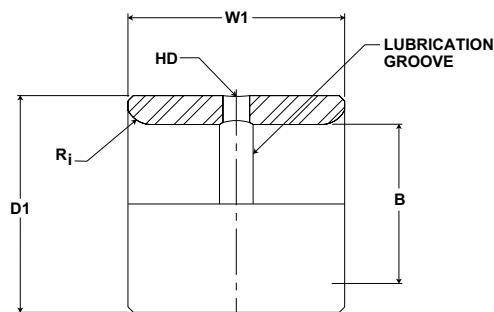
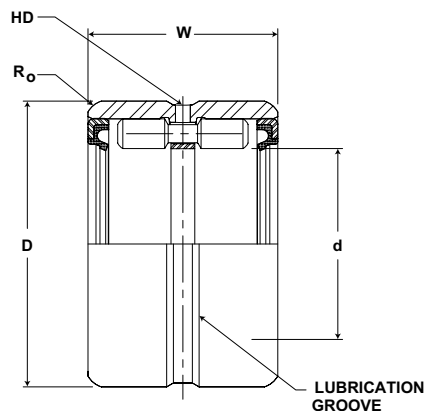
For DS matching as DS suffix to part number

\* For bearing properly filled with #1 grease reduce speed by 50%

Metric dimensions for reference only.

Not all parts are available from stock. Please contact customer service for availability (800) 626-2120.

For more information on bearing capabilities outside of our standard offering, please contact Application Engineering (800) 626-2093.



GR SERIES (continued)

Part No.		B		D1		W1	HD	Ri	Recommended Shaft Diameter with inner ring			Inner Weight
Outer Ring & Roller Assembly	Separable Inner Ring Only	Bore Diameter		Outside Diameter		Width	Radial Lub. Hole Diameter	Max Shaft Radius to Clear				
		inch mm		inch mm		inch mm			inch mm			lb kg
		Nom	Tol.	Nom	Tol.	Tol +0/-0.005 (+0/.13)	(Ref)	(Ref)	Rotating	Stationary	Tol.	
GR 64 SS, S, RS, SRS, RSS	MI 54	3.3750	+0/-0.008	3.9985	+0/-0.009	2.010	0.25	0.10	3.3760	3.3746	+0/-0.0010	2.04
		85.759	+0/-0.020	101.602	+0/-0.023	51.07	6	3	85.8	85.7	+0/-0.025	.93
GR 64	MI 56	3.5000	+0/-0.008	3.9985	+0/-0.009	2.010	0.25	0.10	3.5010	3.4996	+0/-0.0010	1.63
		88.935	+0/-0.020	101.602	+0/-0.023	51.07	6	3	89.0	88.9	+0/-0.025	.74
GR 68 SS, S, RS, SRS, RSS	MI 58	3.6250	+0/-0.008	4.2485	+0/-0.009	2.010	0.25	0.10	3.6260	3.6246	+0/-0.0010	1.70
		92.111	+0/-0.020	107.954	+0/-0.023	51.07	6	3	92.1	92.1	+0/-0.025	.77
GR 68	MI 60	3.7500	+0/-0.008	4.2485	+0/-0.009	2.010	0.25	0.10	3.7510	3.7496	+0/-0.0010	1.75
		95.288	+0/-0.020	107.954	+0/-0.023	51.07	6	3	95.3	95.3	+0/-0.025	.79
GR 72	MI 62	3.8750	+0/-0.008	4.4985	+0/-0.009	2.260	0.25	0.10	3.8760	3.8746	+0/-0.0010	3.25
		98.464	+0/-0.020	114.307	+0/-0.023	57.43	6	3	98.5	98.5	+0/-0.025	1.47
GR 80	MI 64	4.0000	+0/-0.008	4.9985	+0/-0.010	2.260	0.25	0.10	4.0010	3.9996	+0/-0.0010	4.38
		101.640	+0/-0.020	127.012	+0/-0.025	57.43	6	3	101.7	101.6	+0/-0.025	1.99
GR 80	MI 68	4.2500	+0/-0.008	4.9985	+0/-0.010	2.260	0.25	0.10	4.2510	4.2496	+0/-0.0010	5.24
		107.993	+0/-0.020	127.012	+0/-0.025	57.43	6	3	108.0	108.0	+0/-0.025	2.37
GR 88 N	MI 72 N	4.5000	+0/-0.008	5.4985	+0/-0.010	2.515	0.25	0.10	4.5010	4.4996	+0/-0.0010	5.43
		114.345	+0/-0.020	139.717	+0/-0.025	63.91	6	3	114.4	114.3	+0/-0.025	2.47
GR 88	MI 72	4.5000	+0/-0.008	5.4985	+0/-0.010	3.015	0.25	0.10	4.5010	4.4996	+0/-0.0010	5.97
		114.345	+0/-0.020	139.717	+0/-0.025	76.61	6	3	114.4	114.3	+0/-0.025	2.71
GR 96 N	MI 80 N	5.0000	+0/-0.010	5.9983	+0/-0.010	2.515	0.31	0.12	5.0010	4.9995	+0/-0.0010	5.97
		127.050	+0/-0.025	152.417	+0/-0.025	63.91	8	3	127.1	127.0	+0/-0.025	2.71
GR 96	MI 80	5.0000	+0/-0.010	5.9983	+0/-0.010	3.015	0.31	0.12	5.0010	4.9995	+0/-0.0010	7.12
		127.050	+0/-0.025	152.417	+0/-0.025	76.61	8	3	127.1	127.0	+0/-0.025	3.23
GR 104 N	MI 88 N	5.5000	+0/-0.010	6.4983	+0/-0.010	2.515	0.31	0.12	5.5010	5.4995	+0/-0.0010	6.30
		139.755	+0/-0.025	165.122	+0/-0.025	63.91	8	3	139.8	139.7	+0/-0.025	2.88
GR 104	MI 88	5.5000	+0/-0.010	6.4983	+0/-0.010	3.015	0.31	0.12	5.5010	5.4995	+0/-0.0010	7.56
		139.755	+0/-0.025	165.122	+0/-0.025	76.61	8	3	139.8	139.7	+0/-0.025	3.43
GR 116	MI 96	6.0000	+0/-0.010	7.2481	+0/-0.012	3.015	0.31	0.12	6.0012	5.9995	+0/-0.0012	11.06
		152.460	+0/-0.025	184.174	+0/-0.030	76.61	8	3	152.5	152.4	+0/-0.030	5.03
GR 124	MI 104	6.5000	+0/-0.010	7.7481	+0/-0.012	3.015	0.31	0.12	6.5012	6.4995	+0/-0.0012	11.99
		165.165	+0/-0.025	196.879	+0/-0.030	76.61	8	3	165.2	165.2	+0/-0.030	5.39
GR 132	MI 112	7.0000	+0/-0.010	8.2481	+0/-0.012	3.015	0.31	0.12	7.0012	6.9995	+0/-0.0012	12.70
		177.870	+0/-0.025	209.584	+0/-0.030	76.61	8	3	177.9	177.9	+0/-0.030	5.77
GR 140	MI 120	7.5000	+0/-0.012	8.7480	+0/-0.012	3.015	0.31	0.16	7.5012	7.4995	+0/-0.0012	13.60
		190.575	+0/-0.030	222.287	+0/-0.030	76.61	8	4	190.6	190.6	+0/-0.030	6.17
GR 148	MI 128	8.0000	+0/-0.012	9.2480	+0/-0.012	3.015	0.31	0.16	8.0012	7.9995	+0/-0.0012	14.40
		203.280	+0/-0.030	234.992	+0/-0.030	76.61	8	4	203.3	203.3	+0/-0.030	6.55