

PRODUCT INFORMATION PACKET



Model No: SF6B40TC61Y
Catalog No: LM15565
364T TEFC 40HP1200 230460000/360
Totally Enclosed Fan Cooled (TEFC)



Regal and Leeson are trademarks of Regal Beloit Corporation or one of its affiliated companies.
©2018 Regal Beloit Corporation, All Rights Reserved. MC017097E



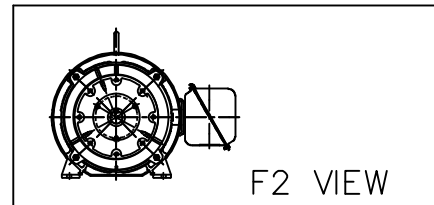
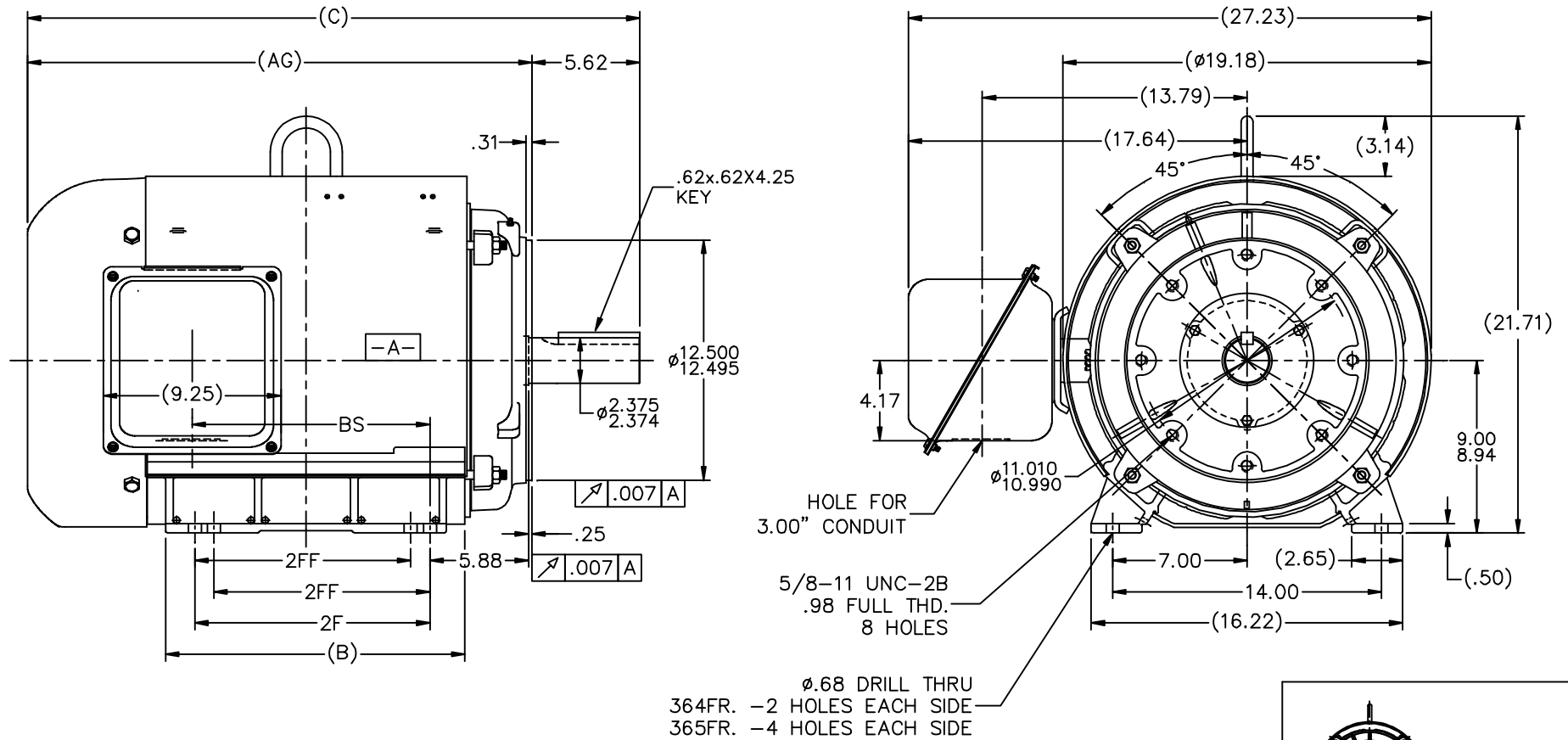


Nameplate Specifications

Output HP	40 Hp	Output KW	30.0 kW
Frequency	60 Hz	Voltage	230/460 V
Current	119.0/59.5 A	Speed	1188 rpm
Service Factor	1.25	Phase	3
Efficiency	94.1 %	Duty	Continuous
Insulation Class	F	Design Code	B
KVA Code	G	Frame	364TC
Enclosure	Totally Enclosed Fan Cooled	Overload Protector	No
Ambient Temperature	40 °C	Drive End Bearing Size	313
Opp Drive End Bearing Size	311	UL	Recognized
CSA	Y	CE	Y
IP Code	43		

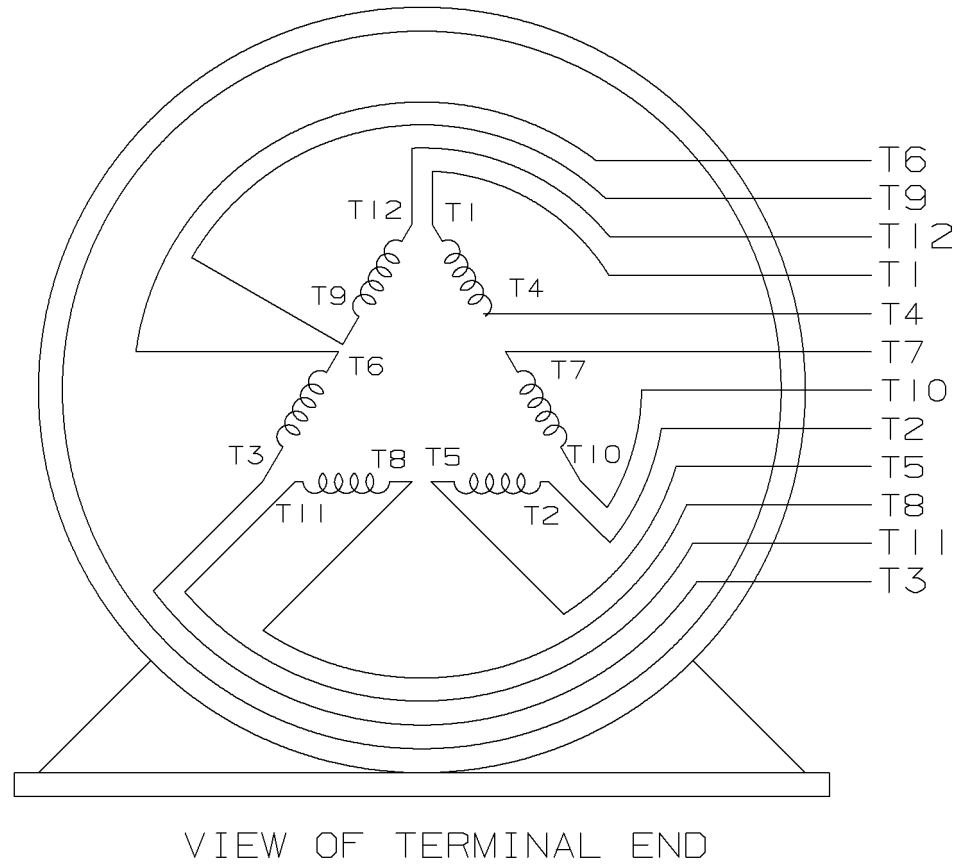
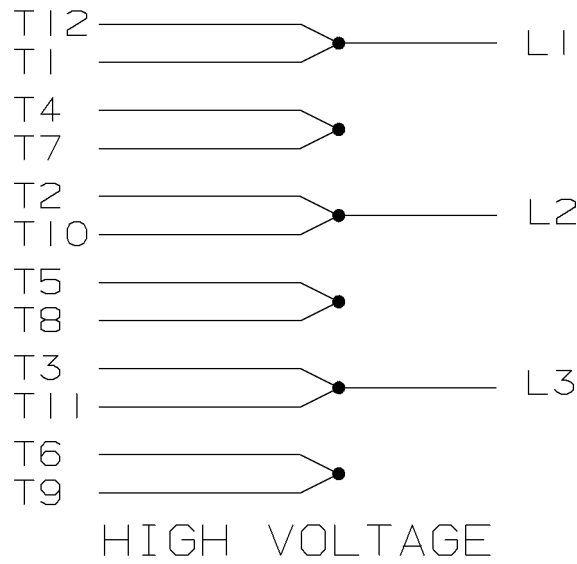
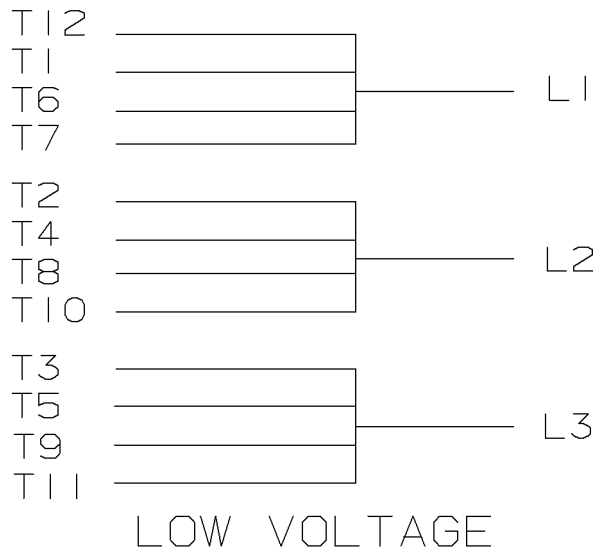
Technical Specifications

Electrical Type	Squirrel Cage Induction Run	Starting Method	Wye Start Delta Run
Poles	6	Rotation	Reversible
Mounting	Rigid base	Motor Orientation	HORIZONTAL
Drive End Bearing	BALL	Opp Drive End Bearing	BALL
Frame Material	Rolled Steel	Shaft Type	T
Overall Length	31.89 in	Frame Length	16.70 in
Shaft Diameter	2.375 in	Shaft Extension	5.88 in
Assembly/Box Mounting	F1/F2 CAPABLE		
Outline Drawing	XH2F1SC1-1670	Connection Diagram	A-EE7308AA-LN



DASH	FRAME	C	AG	B	2F	2FF	BS
1670	364T	31.89	26.27	14.61	11.25	--	--
1770	365T	32.89	27.27	15.61	12.25	11.25	12.56

				TOLERANCES UNLESS SPECIFIED		Lincoln MOTORS		DRAWN HLB 10-17-2002	
				DEC.	INCHES			CHK	ML 10-17-2002
				.X	±.1			APPD	HNH 10-17-2002
				.XX	±.03	TITLE OUTLINE - NEMA MOTORS		SCALE	1=6
2 UPDATED PER ISAAC# 12-1833				REP	04-25-2012	TB	.XXX ±.005	REF	
1 NEW DRAWING CN35344-12				HLB	10-17-2002	HNH	.XXXX ±.0005	MATT'L	
NO. REVISION				BY & DATE	CHK	ANG	±7'30"	FINISH	
THIS DRAWING IN DESIGN AND DETAIL IS OUR PROPERTY AND MUST NOT BE USED EXCEPT IN CONNECTION WITH OUR WORK ALL RIGHTS OF DESIGN AND INVENTION ARE RESERVED THIS IS AN ELECTRONICALLY GENERATED DOCUMENT - DO NOT SCALE THIS PRINT				RFP	10-17-2002	CAD FILE xh2f1sc1		SIZE	DRAWING NO. PAGE 1 OF 1 REV.
				DIST	BY			B	XH2F1SC1 2



					<input checked="" type="checkbox"/> UNLESS OTHERWISE SPECIFIED DIMENSIONS ARE IN INCHES TOL. ON XX±.02 XXX±.005 XXXX±.0005 ANGLES± 7'30"		
2	08-09-1999	RE-ISSUE, ADDED '-' TO PART NUMBER	BLR		MAX. SURFACE ROUGHNESS UNLESS OTHERWISE NOTED		DRAWN BY TRB 07-16-1999
1	06-18-1999	NEW DRAWING	TRB	FINISH		CHKD BY ML 06-18-1999	
				MATERIAL		APPD BY GK 06-18-1999	
REV	DATE	CHANGE	NAME	PART NAME 3 PHASE CONNECTION DIAGRAM 2/1 DELTA - 12 LEADS		DRWG NO A- EE7308AA-LN	

PURCHASED

CADD FILE NO.

EE7308AALN

ERROR: undefined
OFFENDING COMMAND: Pscrip
STACK :



CERTIFICATION DATA SHEET

2100 WASHINGTON ST.
 GRAFTON, WI
 PH. 262-277-8810

CONN. DIAGRAM: A-EE7308AA-LN

OUTLINE: KH2F1SC1-1670

CATALOG # : LM15565

WINDING #: L3646019 1

MOUNTING: F1/F2 CAPABLE

TYPICAL MOTOR PERFORMANCE DATA

HP	KW	SYNC. RPM	F.L. RPM	FRAME	ENCLOSURE	KVA CODE	DESIGN	
40830	30.0&22.4	1200	1188&990	364TC	TEFC	G	B	
PH	Hz	VOLTS	AMPS	START TYPE	DUTY	INSL	S.F.	AMP°C
3	60/50	230/460&190/380	119/59.5&110/55	WYE START DELTA RUN	CONTINUOUS	F4	1.25/1.0	40

FULL LOAD EFF:	94.1&893.6	3/4 LOAD EFF:	94.1	1/2 LOAD EFF:	93	GTD. EFF		ELEC. TYPE
FULL LOAD PF:	67&65.5	3/4 LOAD PF:	59.5	1/2 LOAD PF:	47	92.4		SQ CAGE IND RUN

F.L. TORQUE	LOCKED ROTOR AMPS	L.R. TORQUE	B.D. TORQUE	F.L. RISE°C
177 LB-FT	580 / 290	400 LB-FT 226 %	400 LB-FT 226 %	60

SOUND PRESSURE @ 3 FT.	SOUND POWER	ROTOR WK^2	MAX. WK^2	SAFE STALL TIME	STARTS / HOUR	APPROX. MOTOR WGT
- DBA	- DBA	0 LB-FT^2	- LB-FT^2	- SEC.	-	- LBS.

*** SUPPLEMENTAL INFORMATION ***

DE BRACKET TYPE	ODE BRACKET TYPE	MOUNT TYPE	ORIENTATION	SEVERE DUTY	HAZARDOUS LOCATION	DRIP COVER	SCREENS	PAINT
C-FACE	STANDARD	RIGID	HORIZONTAL	FALSE	NONE	FALSE	NONE	GRAY - LINCOLN

BEARINGS	GREASE	SHAFT TYPE	SPECIAL DE	SPECIAL ODE	SHAFT MATERIAL	FRAME MATERIAL
DE ODE BALL BALL	POLYREX EM	T	NONE	NONE	1045 HOT ROLLED (C-204)	ROLLED STEEL
313 311						

THERMO-PROTECTORS				THERMISTORS	CONTROL	SPACE HEATERS
THERMOSTATS	PROTECTORS	WDG RTDS	BRG RTDS	NONE	FALSE	NONE
NONE	NOT	NONE	NONE			

INVERTER TORQUE: NONE
 INV. HP SPEED RANGE: NONE

ENCODER: NONE
 NONE NONE
 NONE NONE PPR

BRAKE: NONE NONE
 NONE P/N NONE
 NONE NONE
 FT-LB NONE V NONE HZ

*
 N
 O
 T
 E
 S
 *



Motor Load Data									
Load	0%	25%	50%	75%	100%	115%	125%	LR	
Current (Amps)	35.0	38.5	43.0	50.0	59.5	65.5	69.5	290	
Torque (ft-lb)	0.00	44.0	88.0	132	177	204	222	400	
RPM	1200	1197	1195	1190	1188	1186	1184	0	
Efficiency (%)		88.5	93.0	94.1	94.1	94.1	94.1		
P.F. (%)	3.0	27.5	47.0	59.5	67.0	70.0	71.5	34.0	

Motor Speed Data					Information Block				
LR	Pull-Up	BD	Rated	Idle	HP	Sync. RPM	Frame	Enclosure	Construction
0	600	1125	1188	1200	40.0	1200	364	TEFC	TFR
290	270	200	59.5	35.0					230/460#190/380
Torque (ft-lb)	400	375	177	0.00					
					Voltage		Frequency		Design
						60	60	B	LR Code letter
								G	Service Factor
								1.15	Temp Rise @ FL
								60	Duty
								CONT	Ambient
								40	Elevation
								1,000	Rotor/Shaft wk ²
								0.00	Ref Wdg
								L3646019	Sound Pressure @ 1M
								NONE	VFD Rating
								999	Outline Dwg
								dbA	Conn. Diag
								NONE	Additional Specifications:
									0
									0

EQUIV CKT (OHMS / PHASE)			
R1	R2	X1	Xm
0.0850	0.0570	0.3250	1.0560
			9.0040

