

PRODUCT INFORMATION PACKET



Model No: SSF2S2T1B6028
Catalog No: LM24712
2,3600,TEFC,145T,1/60/115/208-230
Totally Enclosed Fan Cooled (TEFC)



Regal and Leeson are trademarks of Regal Beloit Corporation or one of its affiliated companies.
©2018 Regal Beloit Corporation, All Rights Reserved. MC017097E





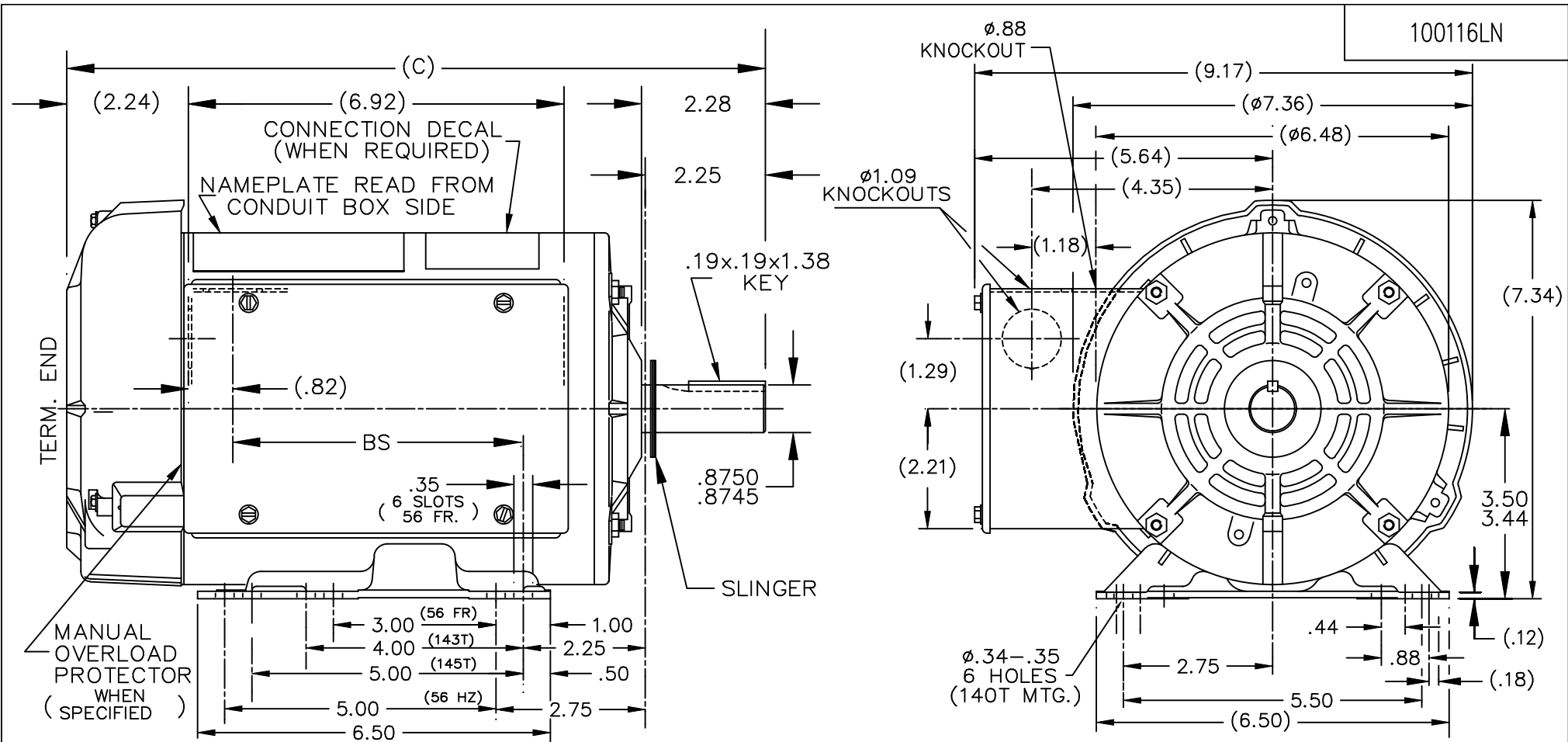
Nameplate Specifications

Output HP	2 Hp	Output KW	1.5 kW
Frequency	60 Hz	Voltage	115/208-230 V
Current	18.0/10.0-9.0 A	Speed	3510 rpm
Service Factor	1.15	Phase	1
Efficiency	80 %	Duty	Continuous
Insulation Class	B	Design Code	L
KVA Code	H	Frame	145T
Enclosure	Totally Enclosed Fan Cooled	Overload Protector	No
Ambient Temperature	40 °C	Drive End Bearing Size	205
Opp Drive End Bearing Size	203	UL	Recognized
CSA	Y	CE	N
IP Code	43		


Technical Specifications

Electrical Type	Capacitor Start Capacitor Run	Starting Method	Across The Line
Poles	2	Rotation	Selective Counterclockwise
Mounting	Rigid base	Motor Orientation	HORIZONTAL
Drive End Bearing	BALL	Opp Drive End Bearing	BALL
Frame Material	Rolled Steel	Shaft Type	T
Overall Length	13.37 in	Frame Length	8.06 in
Shaft Diameter	0.875 in	Shaft Extension	2.25 in
Assembly/Box Mounting	F1 ONLY		
Outline Drawing	A-100116LN-806	Connection Diagram	102006-51-LN

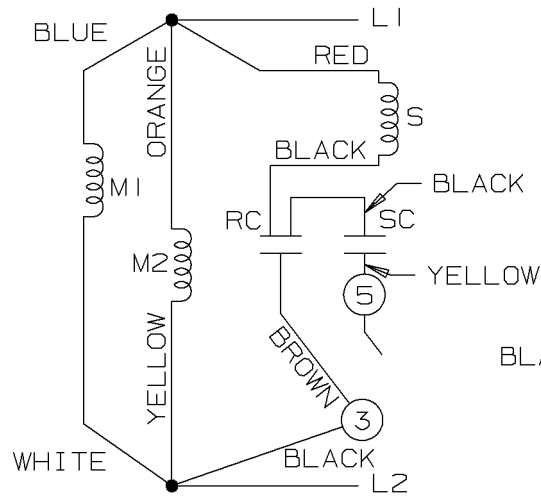
This is an uncontrolled document once printed or downloaded and is subject to change without notice. Date Created: 10/15/2018



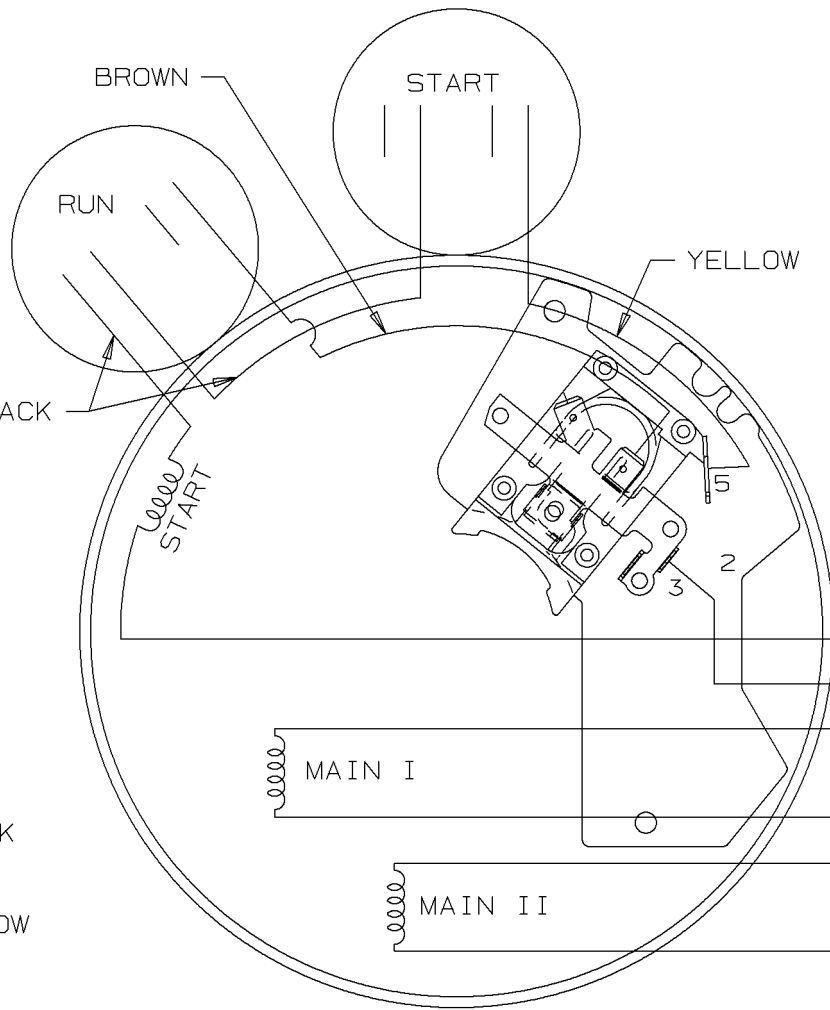
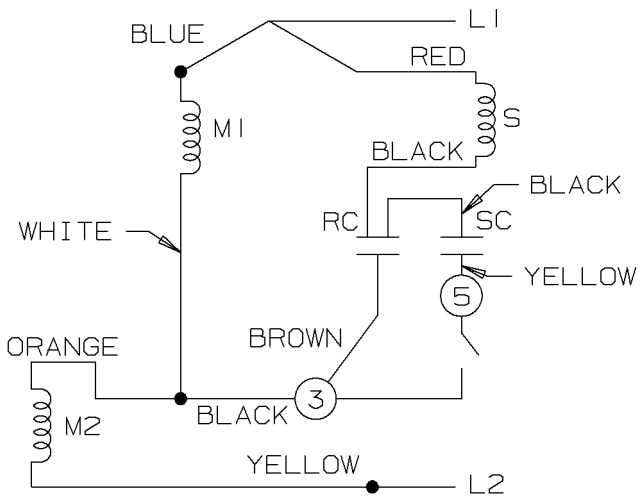
DASH	FR.	C	BS		DASH	FR.	C	BS	
					806	140T/56HZ	13.37	5.82	
					856	"	13.87	6.32	
					906	"	14.37	6.82	
756	140T/56HZ	12.87	5.32		956	"	14.87	7.32	

				TOLERANCES UNLESS SPECIFIED				DRAWN TJB 11-24-1999				
				DEC.	INCHES			CHK ML 11-29-1999				
				.X	$\pm .1$			APPD GK 11-29-1999				
				.XX	$\pm .03$	TITLE OUTLINE 140 FR. 56 HZ - TEFC 1 ϕ - BB		SCALE 1=2.75				
2	ADDED CONNECTION DECAL			NJS 04-07-2003	SAS .XXX			$\pm .005$	REF			
1	NEW DRAWING			TJB 11-29-1999	.XXXX	$\pm .0005$	MAT'L.		FMF			
NO.	REVISION			BY & DATE	CHK	ANG	$\pm 7'30''$		PREV			
THIS DRAWING IN DESIGN AND DETAIL IS OUR PROPERTY AND MUST NOT BE USED EXCEPT IN CONNECTION WITH OUR WORK ALL RIGHTS OF DESIGN AND INVENTION ARE RESERVED THIS IS AN ELECTRONICALLY GENERATED DOCUMENT - DO NOT SCALE THIS PRINT				RFP	CAD FILE 100116LN			SIZE	DRAWING NO.	PAGE	OF	REV.
				DIST	WP			A	100116LN			2

LOW VOLTAGE C.C.W.

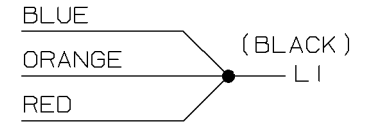


HIGH VOLTAGE C.C.W.

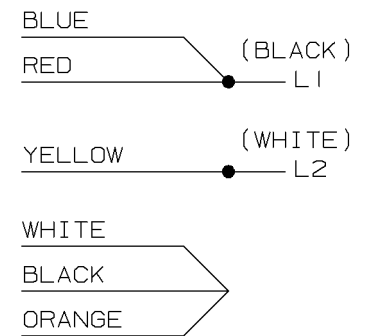


DUAL VOLTAGE CAPACITOR
START-CAP RUN NO OVERLOAD
SELECT ROTATION

LOW VOLTAGE C.C.W. ROTATION



HIGH VOLTAGE C.C.W. ROTATION



FOR C.W. ROTATION,
EITHER VOLTAGE,
INTERCHANGE RED WITH
BLACK LEAD

					✓ UNLESS OTHERWISE SPECIFIED DIMENSIONS ARE IN INCHES TOL. ON XX± XXX±.005 XXXX±.0005 ANGLES± 7'30"		
						MAX. SURFACE ROUGHNESS UNLESS OTHERWISE NOTED	DRAWN BY BLR 09-29-1999 CHKD BY DRS 09-29-1999
1	09-29-1999	NEW DRAWING	BLR		MATERIAL	APPD BY GK 09-29-1999	
REV	DATE	CHANGE	NAME	PART NAME	CONNECTION DIAGRAM		DRWG NO A-102006-51-LN

PURCHASED

CADD FILE NO.

102006-51-LN



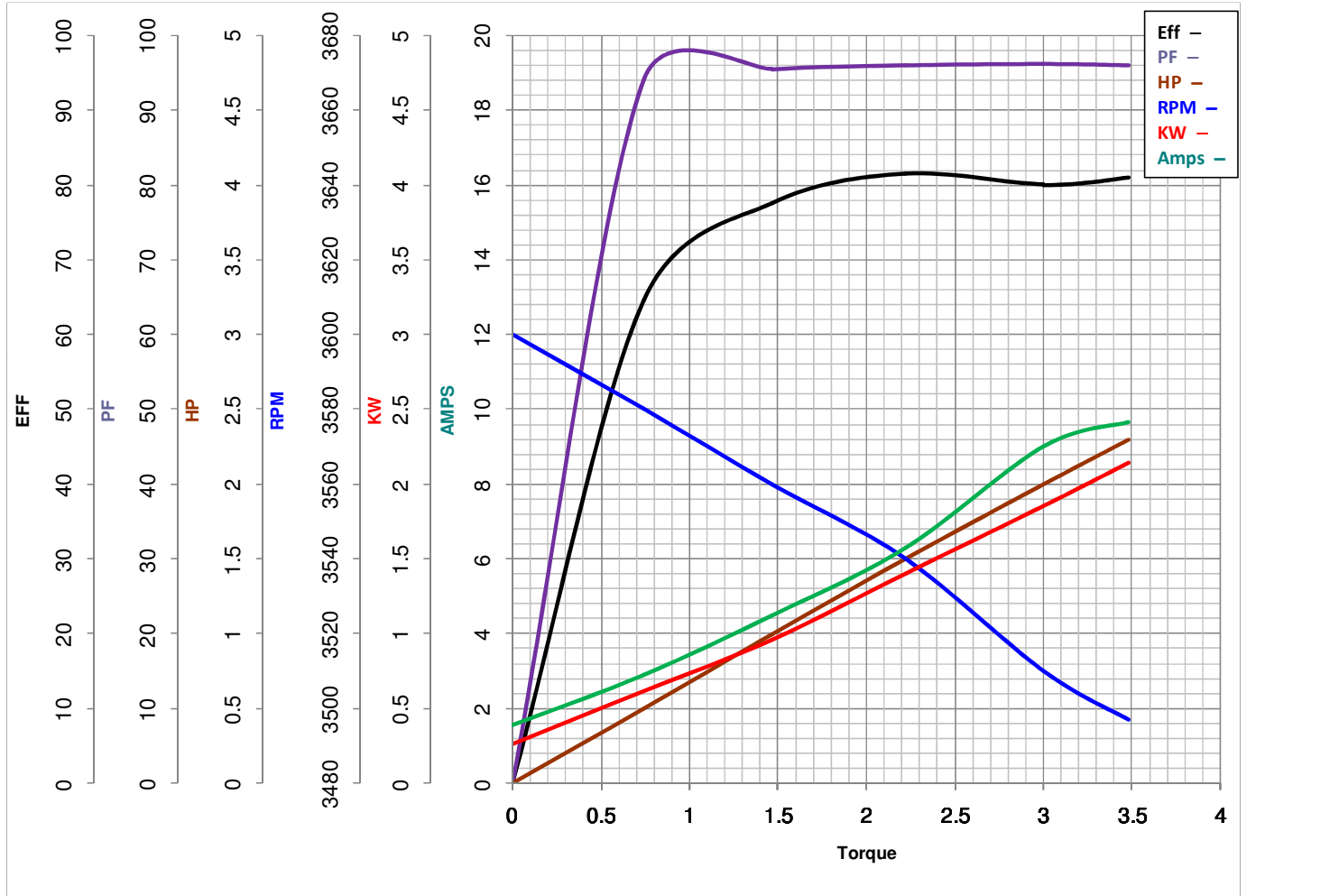
LEESON ELECTRIC CORPORATION
 TYPICAL PERFORMANCE CURVE for AC MOTOR

Model No LM24712

Curve at 230 Volts HP 2.00 PHASE 1
60 HZ
2 HP VOLTS 115/208-230

Catalog No LM24712AD

HZ 60 RPM 3510



Torque in Lb.Ft

FL TORQUE 3 Lb.Ft
 BD TORQUE 7.7 Lb.Ft
 LR TORQUE 6.23 Lb.Ft

FL AMPS 18/10-9
 PU TORQUE 5.0 Lb.Ft
 LR AMPS 60.3

WINDING ZB229-3

Date 3/27/2018